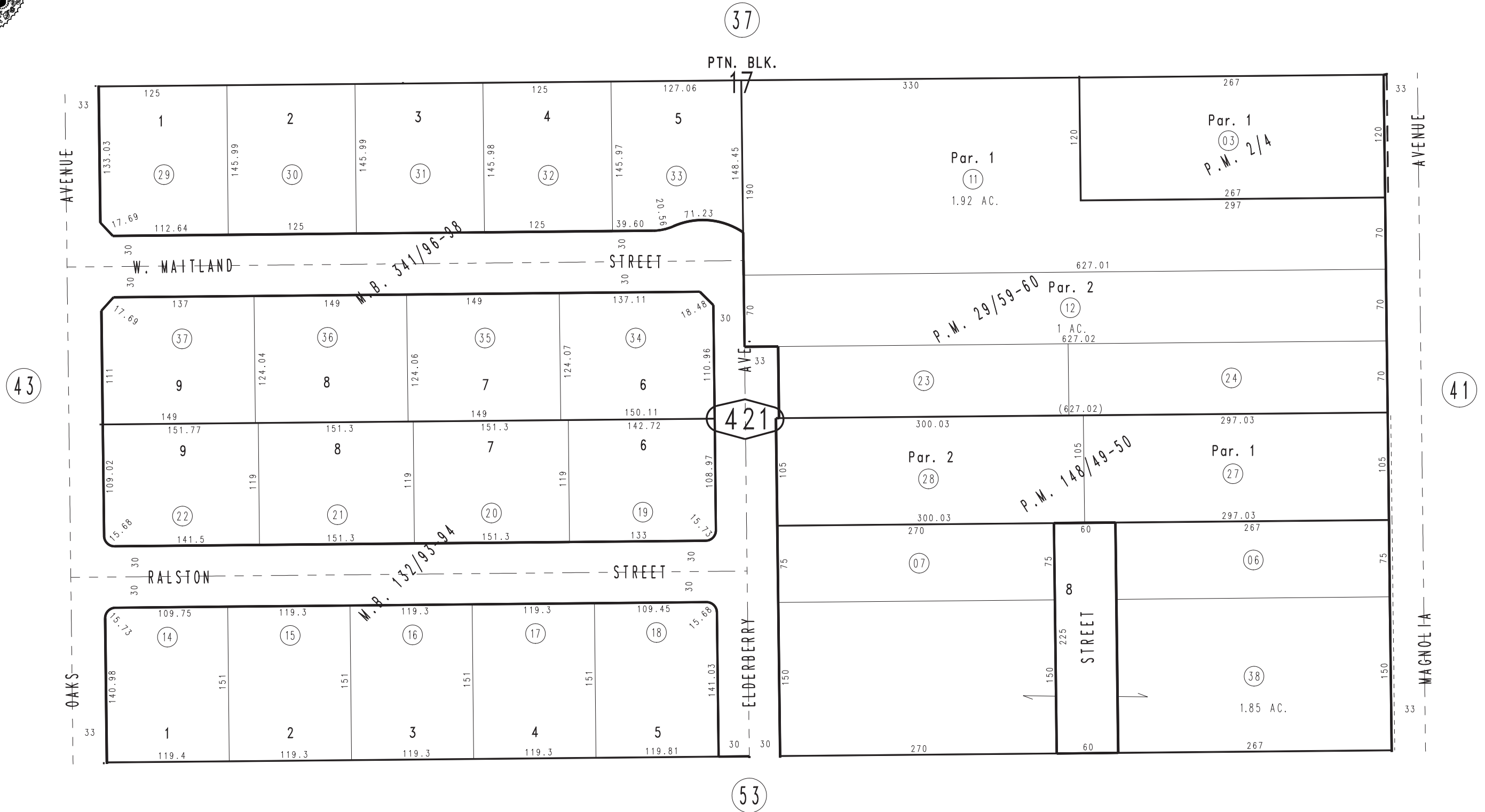


THIS MAP IS FOR THE PURPOSE  
OF AD VALOREM TAXATION ONLY.

# Ptn. Monte Vista Tract No. 2, M.B. 16/33-34

City of Ontario  
Tax Rate Area  
4052

1011 - 42



Tract No. 18949, M.B. 341/96-98  
 Parcel Map No. 10823, P.M. 148/49-50  
 Tract No. 9491, M.B. 132/93-94  
 Ptn. Parcel Map No. 3186, P.M. 29/59-60  
 Parcel Map No. 135, P.M. 2/4

November 2004

Ptn. S.W.1/4, Sec.25  
T.1S.,R.8W.

Assessor's Map  
Book 1011 Page 42  
San Bernardino County

REVISED  
04/23/15 GW  
12/14/15 KC