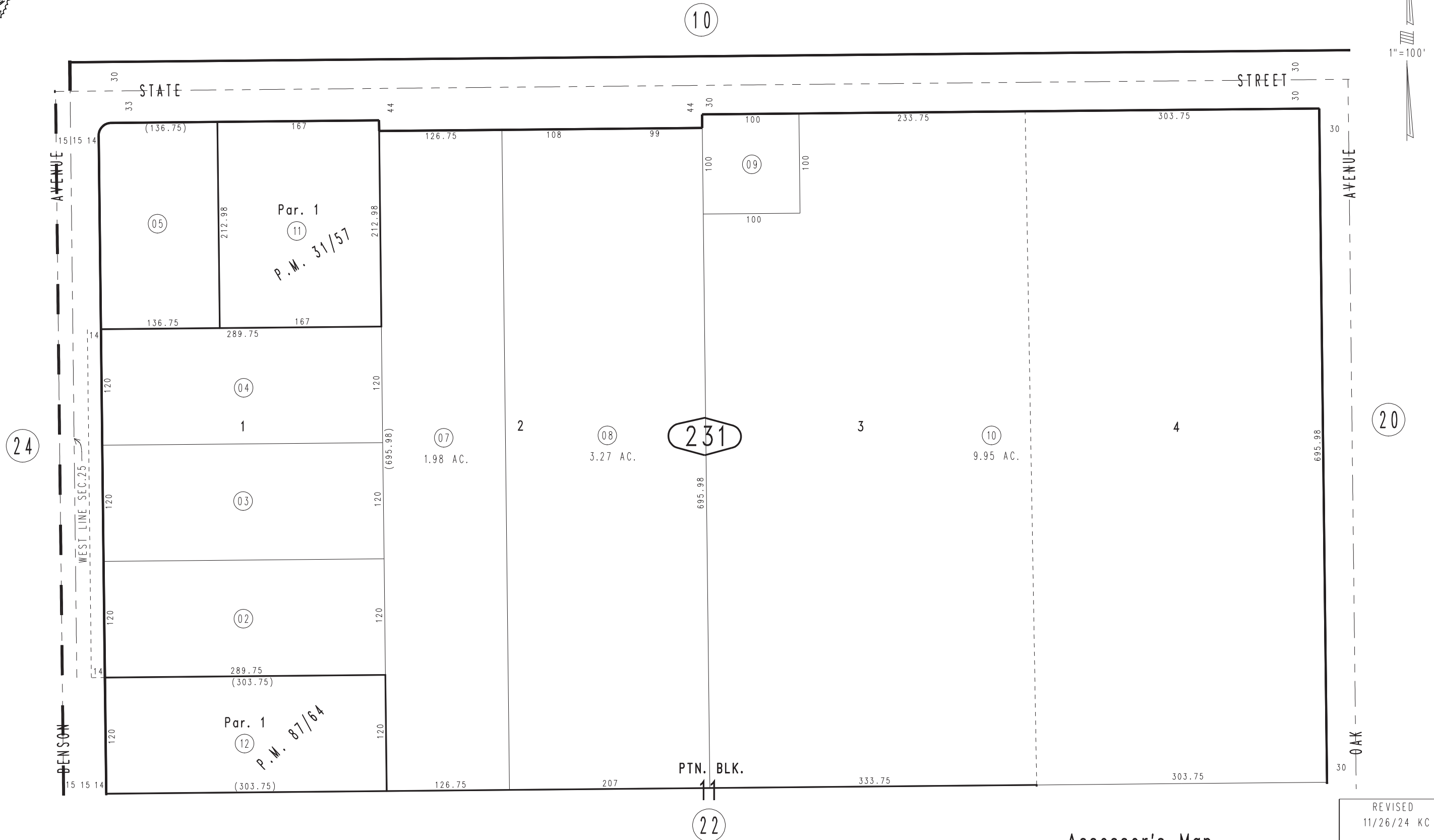


THIS MAP IS FOR THE PURPOSE
OF AD VALOREM TAXATION ONLY.

Ptn. Monte Vista Tract No. 2, M.B. 16/33-34

City of Ontario
Tax Rate Area
4000

1011 - 23



November 2004

Parcel Map No. 8036, P.M. 87/64
Parcel Map No. 3482, P.M. 31/57

Ptn. N.W.1/4, Sec.25
T.1S.,R.8W.

Assessor's Map
Book 1011 Page 23
San Bernardino County

REVISED
11/26/24 KC