

THIS MAP IS FOR THE PURPOSE
OF AD VALOREM TAXATION ONLY.

Ptn. Monte Vista Tract No. 2, M.B. 16/33-34

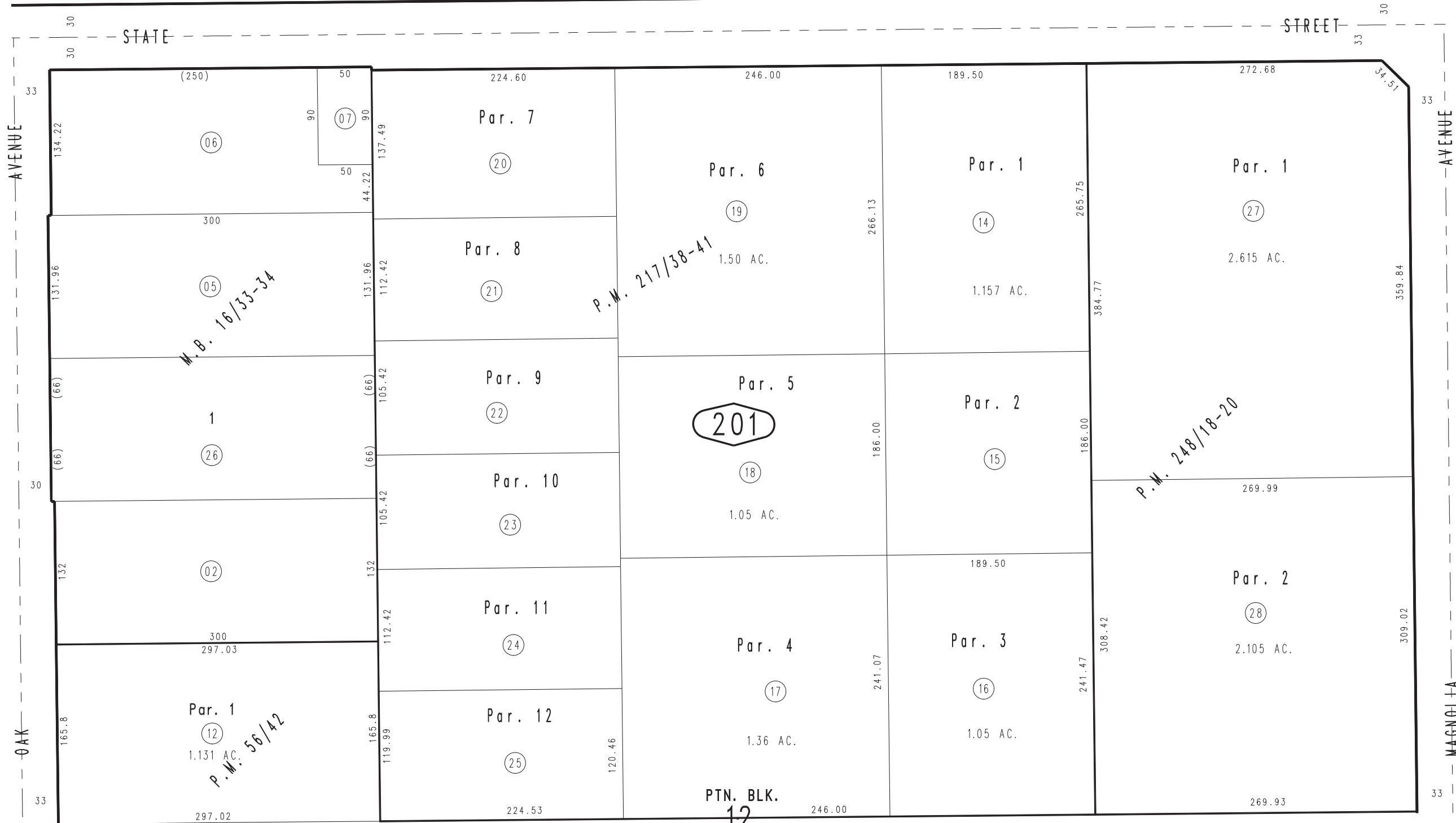
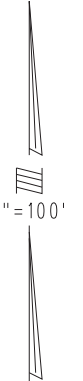
City of Ontario
Tax Rate Area
4000

1011 - 20



10

U.P. R.R.



23

19

Parcel Map No. 19737, P.M. 248/18-20
Parcel Map No. 17058, P.M. 217/38-41
Ptn. Parcel Map No. 5314, P.M. 56/42

21

Ptn. N.W.1/4, Sec.25
T.1S.,R.8W.

Assessor's Map
Book 1011 Page 20
San Bernardino County

REVISED
08/02/17 GW