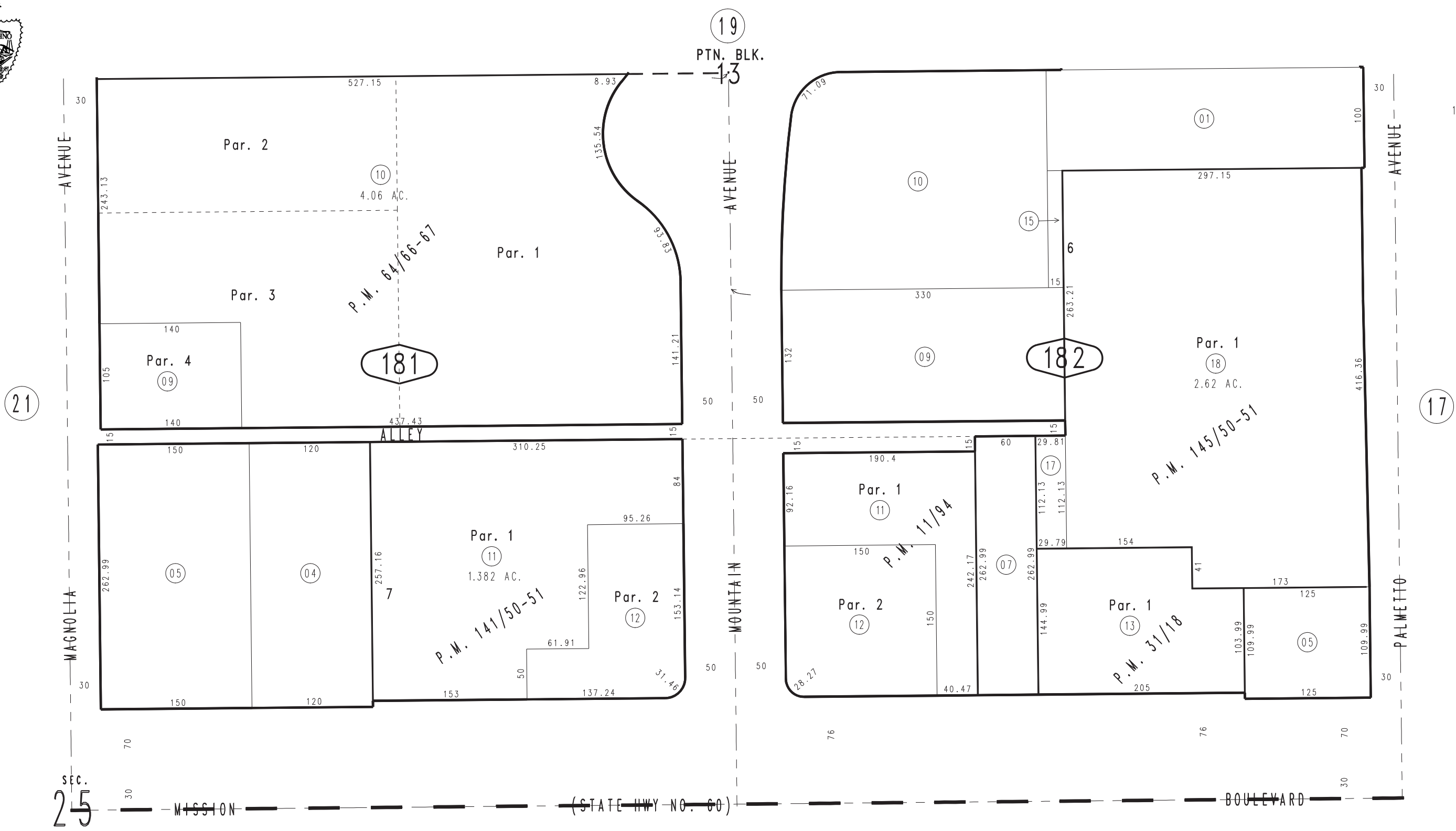


THIS MAP IS FOR THE PURPOSE
OF AD VALOREM TAXATION ONLY.

Ptn. Monte Vista Tract No. 2, M.B. 16/33-34

City of Ontario
Tax Rate Area
4000

1011 - 18



- Parcel Map No. 11933, P.M. 145/50-51
- Parcel Map No. 11002, P.M. 141/50-51
- Parcel Map No. 6323, P.M. 64/66-67
- Parcel Map No. 2940, P.M. 31/18
- Parcel Map No. 1442, P.M. 11/94

November 2004

Ptn. N.E.1/4, Sec.25
T.1S.,R.8W.

Assessor's Map
Book 1011 Page 18
San Bernardino County

REVISED