

THIS MAP IS FOR THE PURPOSE  
OF AD VALOREM TAXATION ONLY.

# Ptn. Monte Vista Tract No. 2, M.B. 16/33-34

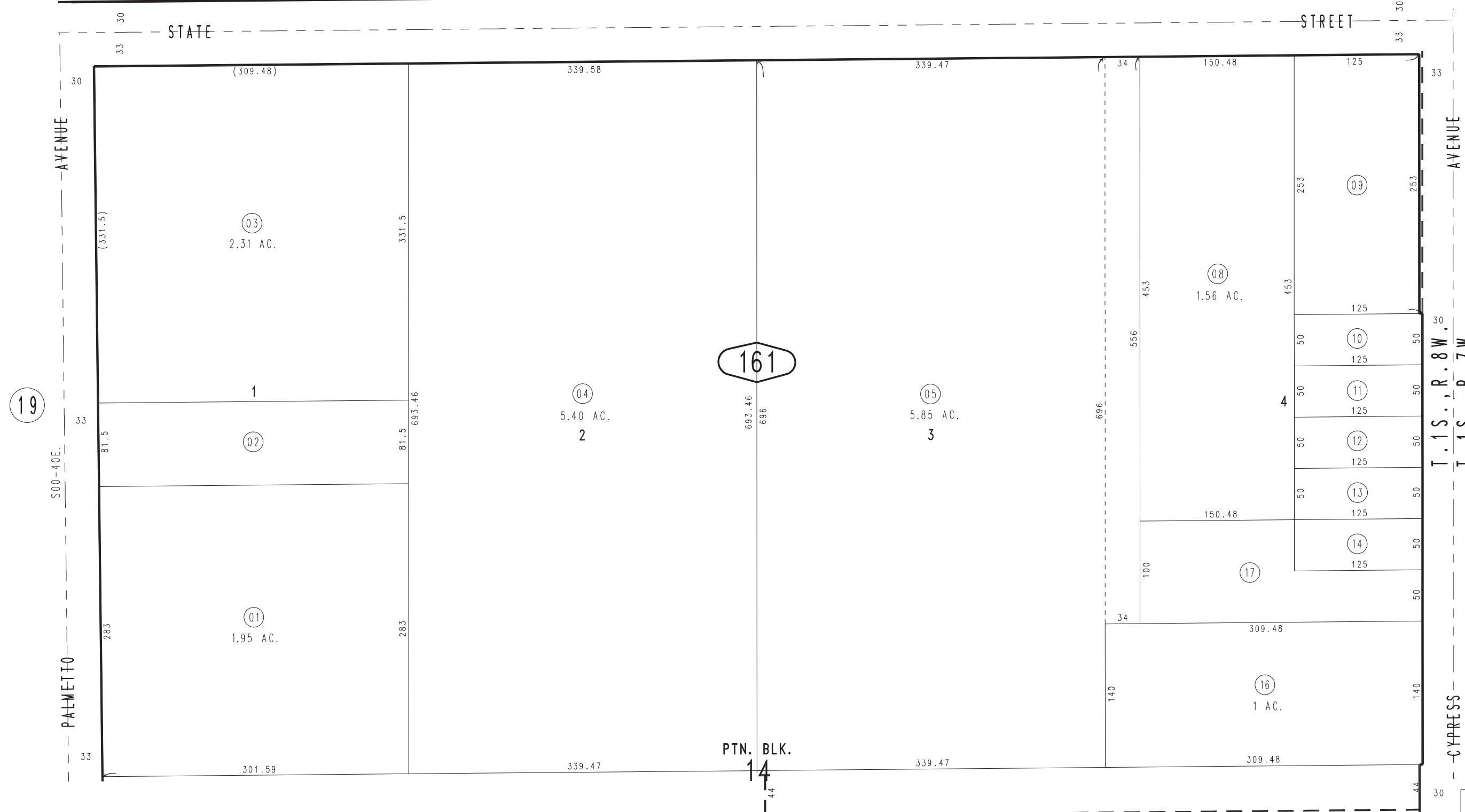
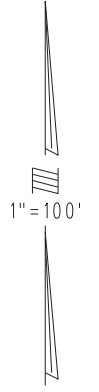
64

City of Ontario  
Tax Rate Area  
4000

1011 - 16



U.P. R.R.



19

1049  
30

17

Ptn. N.E.1/4, Sec.25  
T.1S.,R.8W.

Assessor's Map  
Book 1011 Page 16  
San Bernardino County

REVISED  
11/28/23 XM