

THIS MAP IS FOR THE PURPOSE OF AD VALOREM TAXATION ONLY.

Ptn. N.1/2, Sec.13, T.1S.,R.8W.

City of Ontario  
Tax Rate Area  
4069

1008 - 27



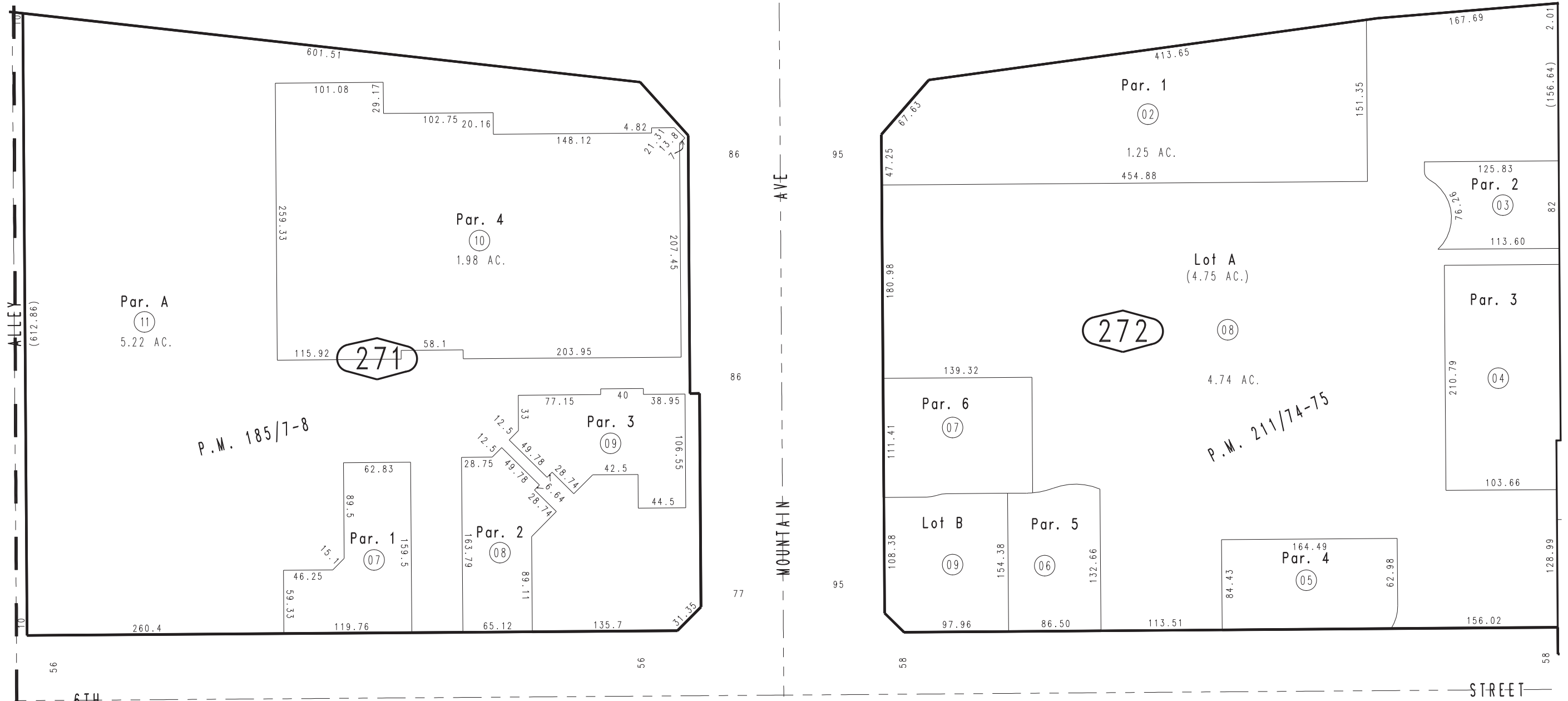
STATE

24

HWY

1"=100'

28



26

SEC. 13  
T.1S.,R.8W.

43

47

October 2004

Parcel Map No. 16791, P.M. 211/74-75  
Parcel Map No. 15136, P.M. 185/7-8

Assessor's Map  
Book 1008 Page 27  
San Bernardino County

REVISED  
03/30/20 RU