

THIS MAP IS FOR THE PURPOSE OF AD VALOREM TAXATION ONLY.

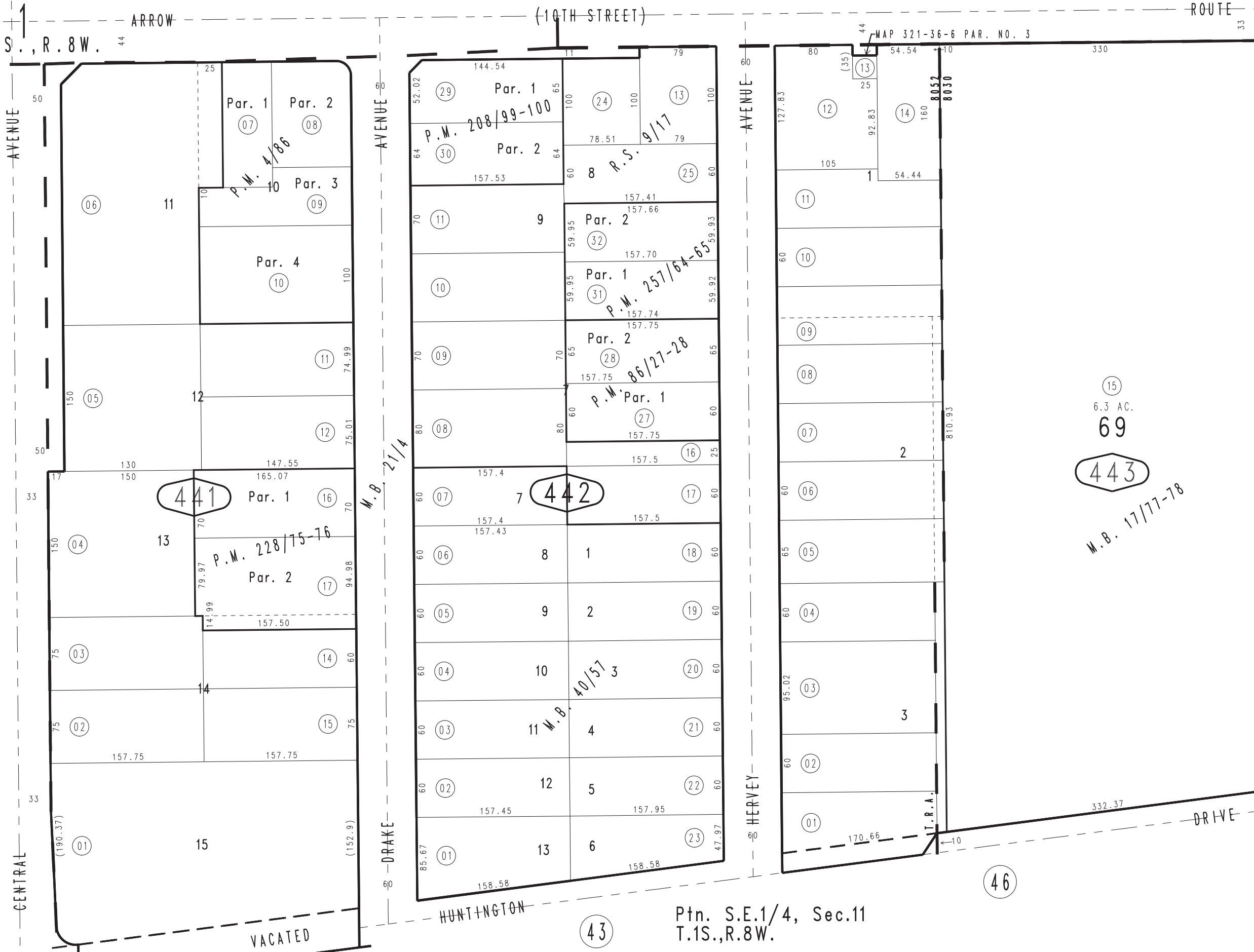
Ptn. College Heights Tract M.B. 17/77-78

City of Upland
Tax Rate Area
8007 8030

1007 - 44



SEC. 11
T. 1 S., R. 8 W.



Record of Survey, R.S. 9/17
 Carson Tract, M.B. 21/4
 Tract No. 2992, M.B. 40/57
 Parcel Map No. 449, P.M. 4/86
 Parcel Map No. 8026, P.M. 86/27-28
 Parcel Map No. 15618, P.M. 208/99-100
 Parcel Map No. 18660, P.M. 228/75-76

Parcel Map No. 19509, P.M. 257/64-65
Assessor's Map
Book 1007 Page 44
 San Bernardino County