

THIS MAP IS FOR THE PURPOSE OF AD VALOREM TAXATION ONLY.

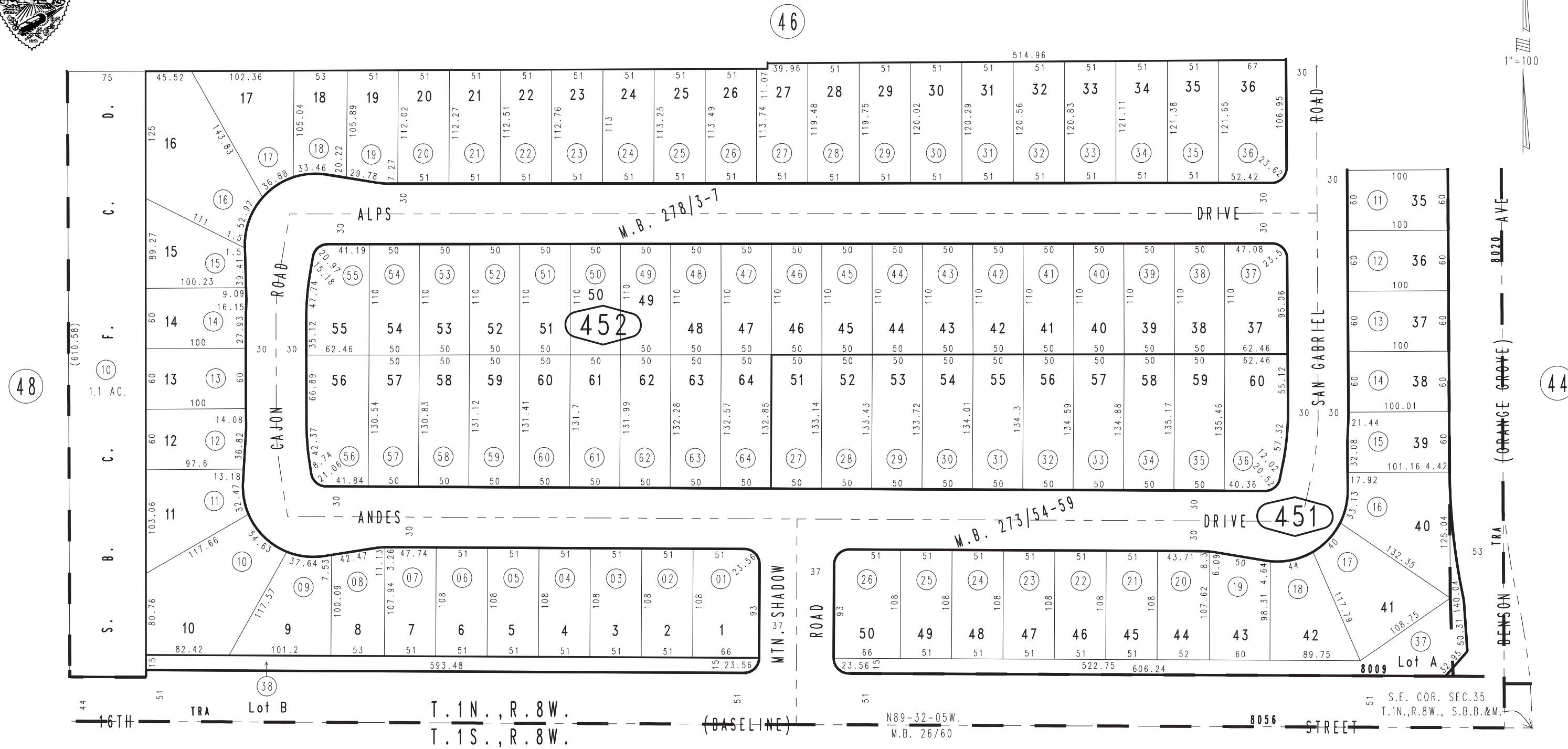
Ptn. Tract No. 1836, M.B. 26/60

City of Upland
Tax Rate Area
8009,8020,8056

1005 - 45



1"=100'



48

44

1006
01

August 2004

Ptn. Tract No. 15935-1, M.B. 273/54-59
Tract No. 15935, M.B. 278/3-7

Ptn. S.E.1/4, Sec.35
T.1N.,R.8W.

Assessor's Map
Book 1005 Page 45
San Bernardino County

REVISED
06/29/07 RU