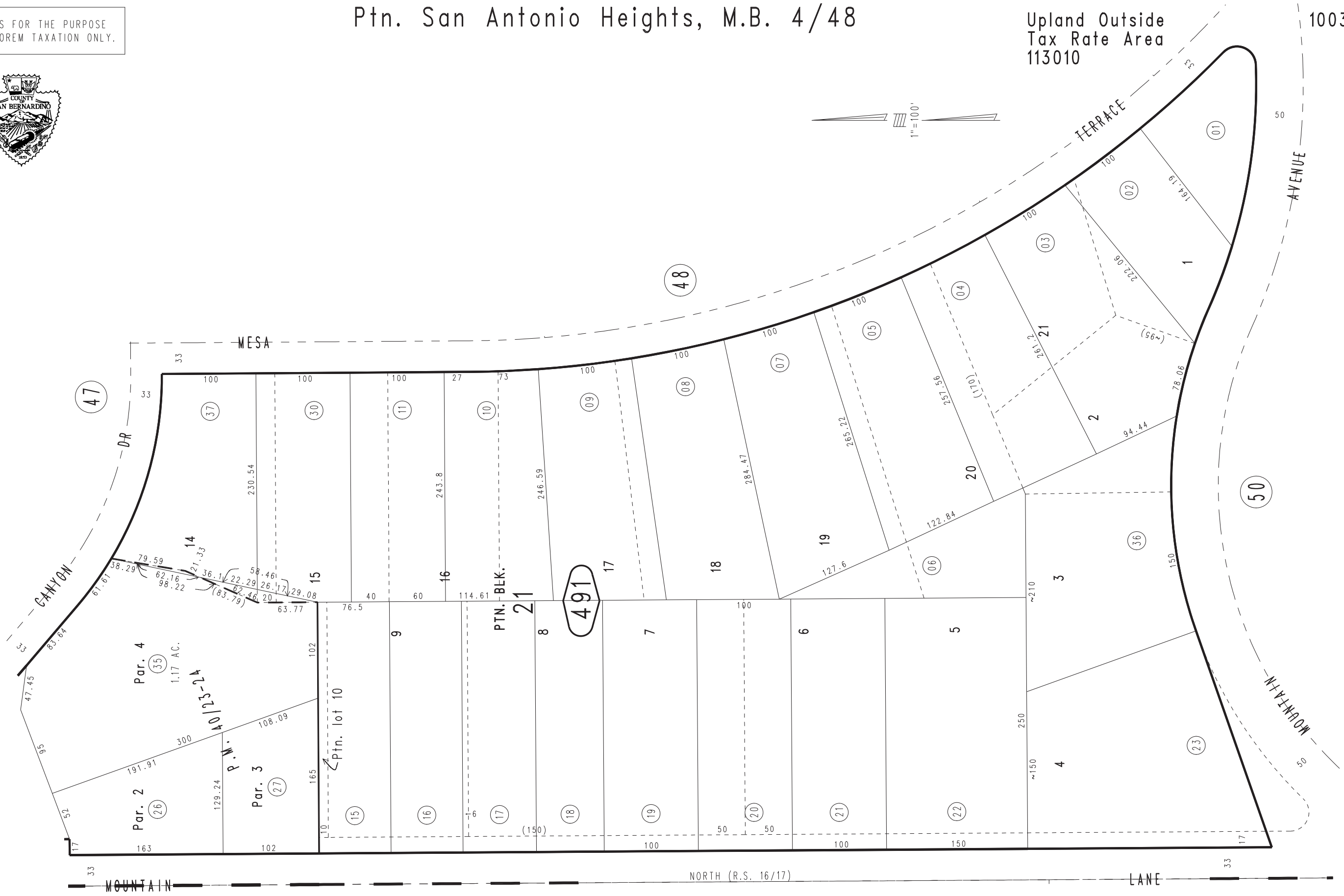


THIS MAP IS FOR THE PURPOSE  
OF AD VALOREM TAXATION ONLY.

# Ptn. San Antonio Heights, M.B. 4/48

Upland Outside  
Tax Rate Area  
113010

1003 - 49



0200  
39

0200  
12

0200  
40

0200  
13

August 2004

Ptn. Parcel Map No. 3792, P.M. 40/23-24

Assessor's Map  
Book 1003 Page 49  
San Bernardino County

REVISED