

THIS MAP IS FOR THE PURPOSE  
OF AD VALOREM TAXATION ONLY.



# Ptn. San Antonio Heights, M.B. 4/48

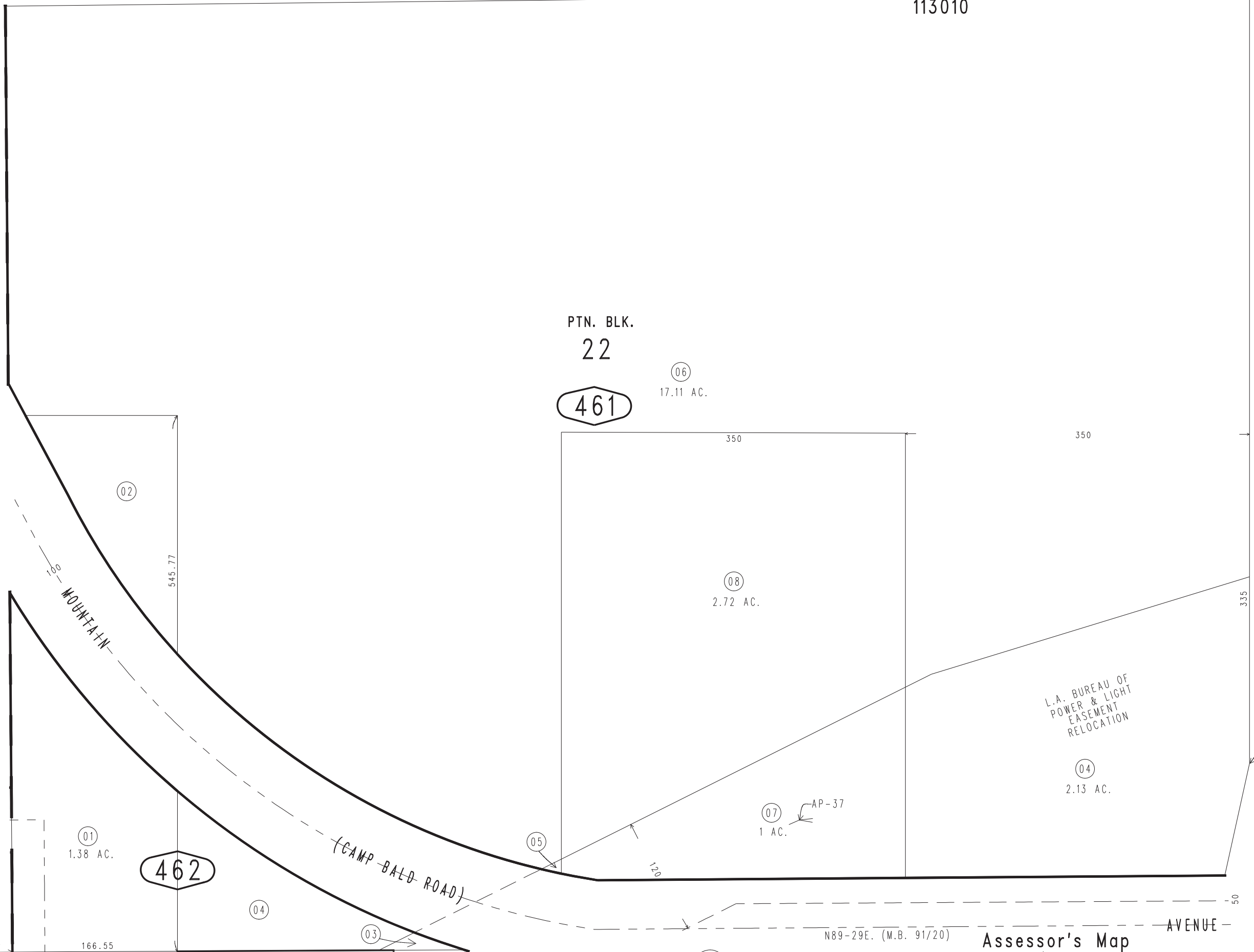
45

Upland Outside  
Tax Rate Area  
113010

1003 - 46



0200  
10



PTN. BLK.  
22

461

06  
17.11 AC.

08  
2.72 AC.

07  
1 AC. AP-37

L.A. BUREAU OF  
POWER & LIGHT  
EASEMENT  
RELOCATION

04  
2.13 AC.

43

MOST NLY.  
COR. LOT 5  
BLK. 37

462

01  
1.38 AC.

N.W. COR.  
LOT 5  
BLK. 22

47

N89-29E. (M.B. 91/20)

AVENUE

Assessor's Map  
Book 1003 Page 46  
San Bernardino County

REVISED