

THIS MAP IS FOR THE PURPOSE
OF AD VALOREM TAXATION ONLY.

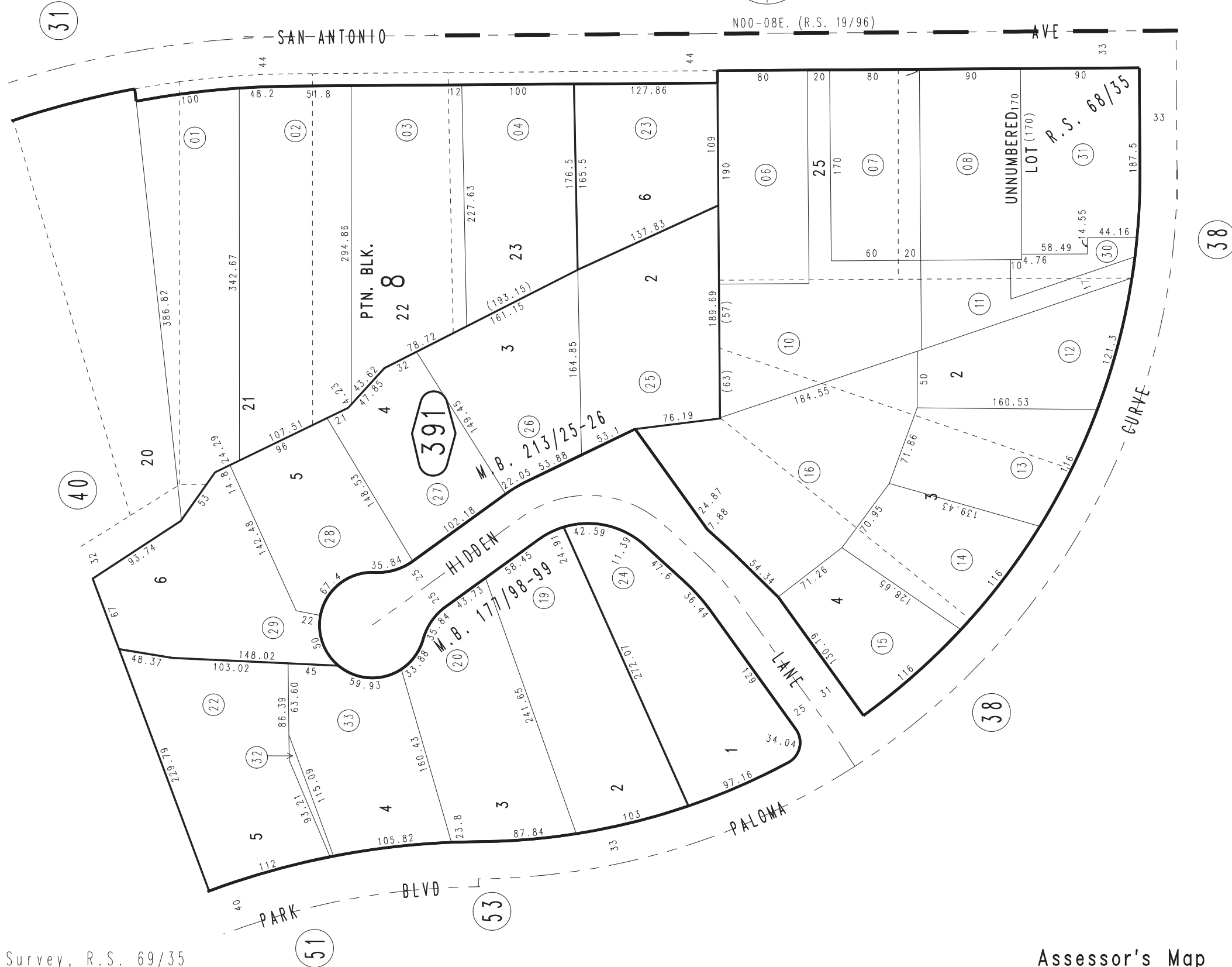
Ptn. San Antonio Heights, M.B. 4/48

Upland Outside
Tax Rate Area
113010

1003 - 39



1043
01



Record of Survey, R.S. 69/35
Tract No. 12803, M.B. 213/25-26
Ptn. Tract No. 11971, M.B. 177/98-99

August 2004

Assessor's Map
Book 1003 Page 39
San Bernardino County

REVISED
07/21/15 RU