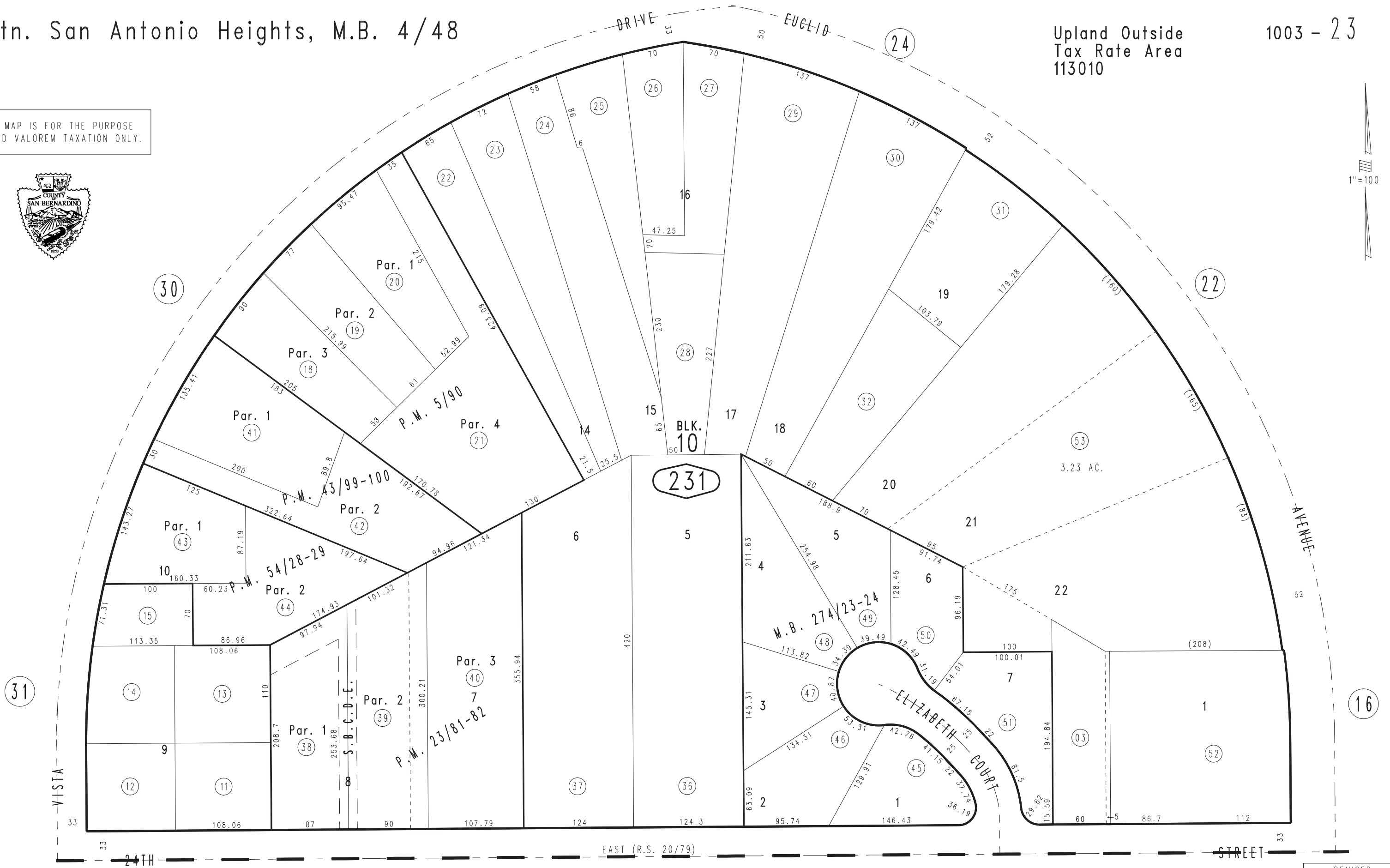


THIS MAP IS FOR THE PURPOSE  
OF AD VALOREM TAXATION ONLY.



Parcel Map No. 4030, P.M. 43/99-100  
Parcel Map No. 1824, P.M. 23/81-82  
Parcel Map No. 261, P.M. 5/90

1043  
03

Tract No. 15290, M.B. 274/23-24  
Parcel Map No. 4663, P.M. 54/28-29

Ptn. S.1/2, Sec. 19  
T.1N., R.7W.

1043  
04

Assessor's Map  
Book 1003 Page 23  
San Bernardino County