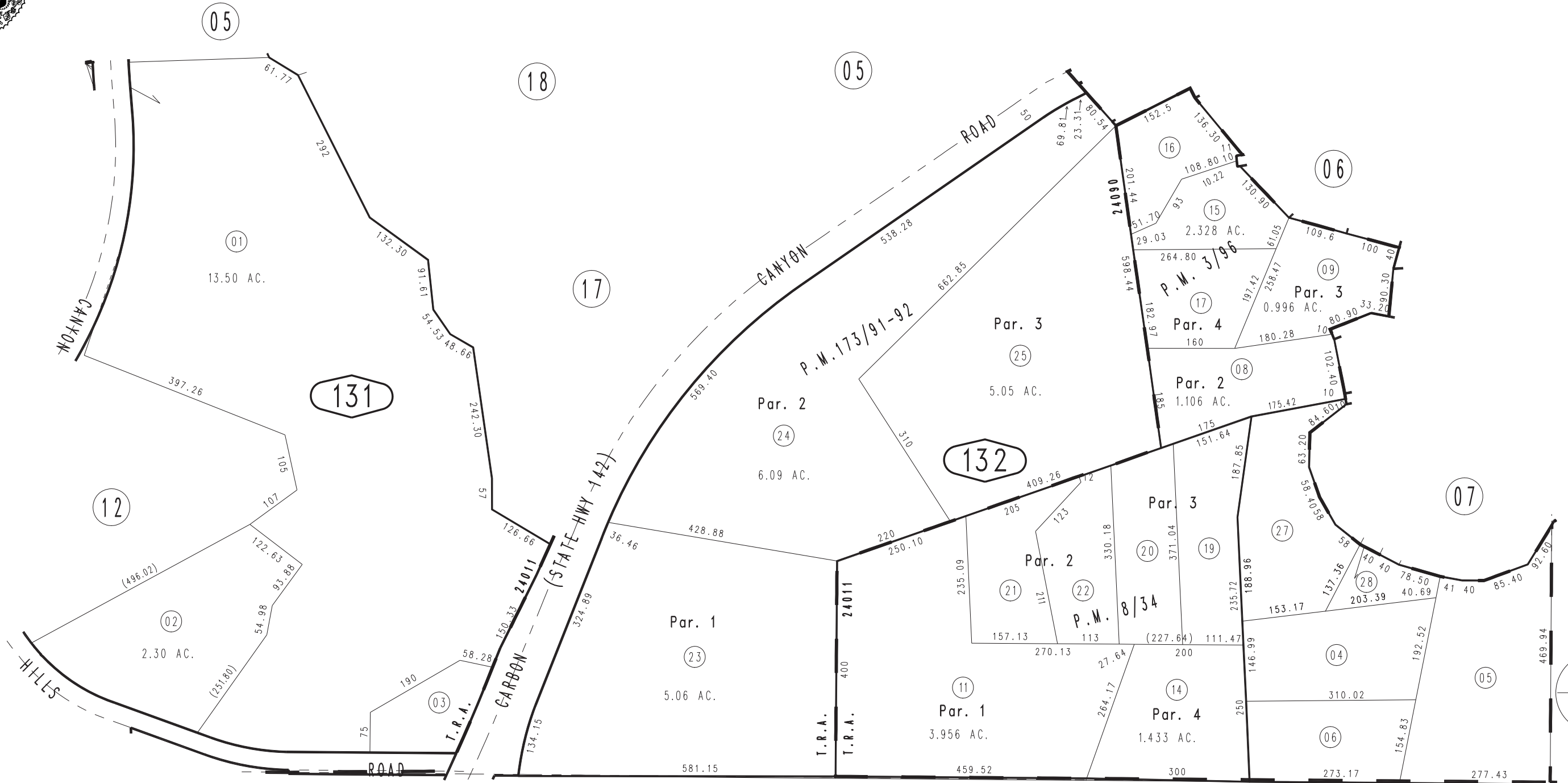


THIS MAP IS FOR THE PURPOSE
OF AD VALOREM TAXATION ONLY.

Ptn. S.1/2, N.E.1/4 & S.1/2, N.W.1/4, Sec. 36
T.2S., R.9W., S.B.M.

Chino Outside
Tax Rate Area
24011,24090

1000 - 13



1017
26

AUG. 1966

Parcel Map No. 14532, P.M. 173/91-92
Parcel Map No. 314, P.M. 3/96
Parcel Map No. 822, P.M. 8/34

Assessor's Map
Book 1000 Page 13
San Bernardino County

REVISED
10/09/14 GW-MC