

THIS MAP IS FOR THE PURPOSE
OF AD VALOREM TAXATION ONLY.

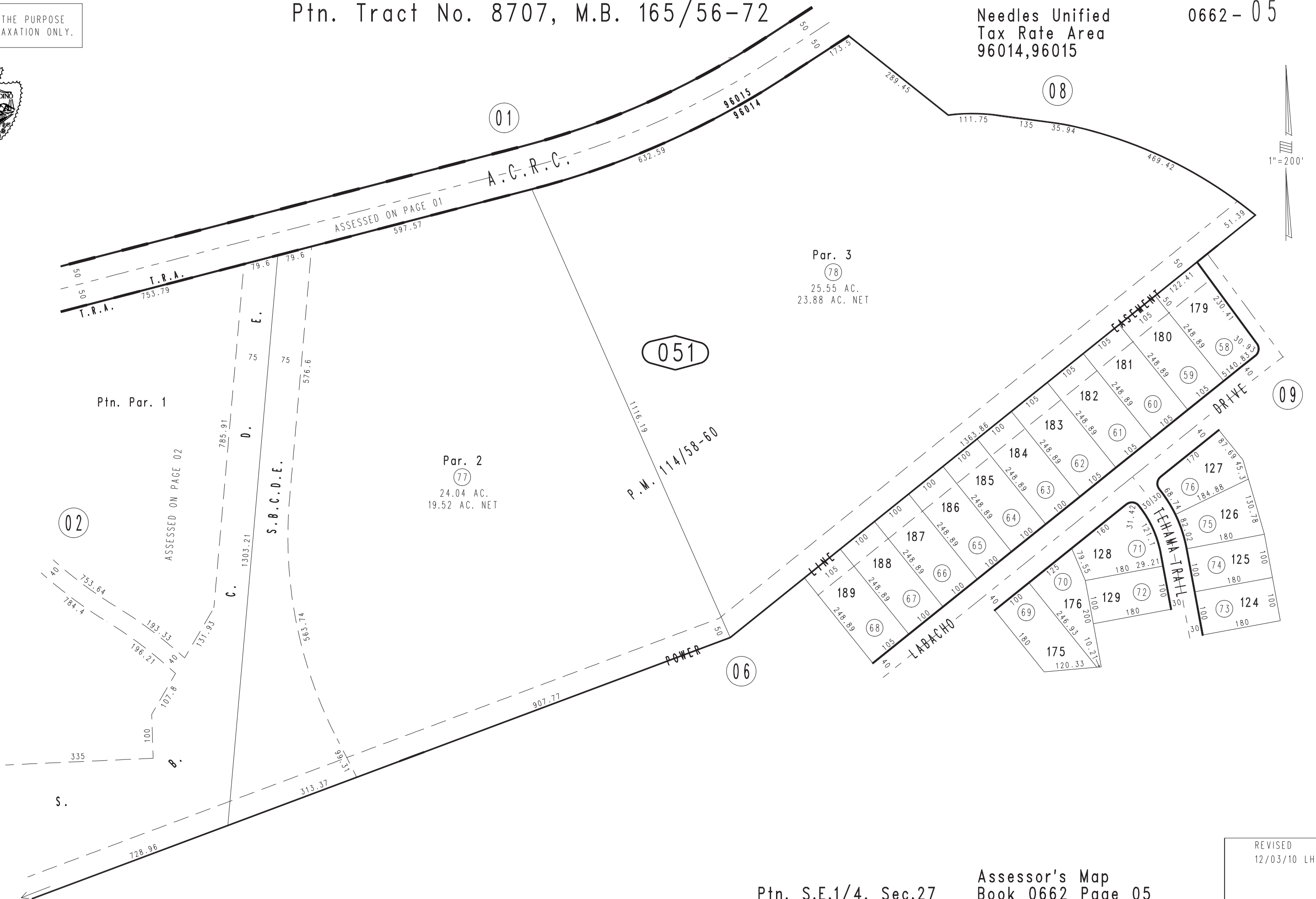


Ptn. Tract No. 8707, M.B. 165/56-72

Needles Unified
Tax Rate Area
96014, 96015

0662-05

1" = 200'



July 2005

Ptn. Parcel Map No. 9000, P.M. 114/58-60

Ptn. S.E.1/4, Sec.27
T.1N.,R.25E.

Assessor's Map
Book 0662 Page 05
San Bernardino County

REVISED
12/03/10 LH