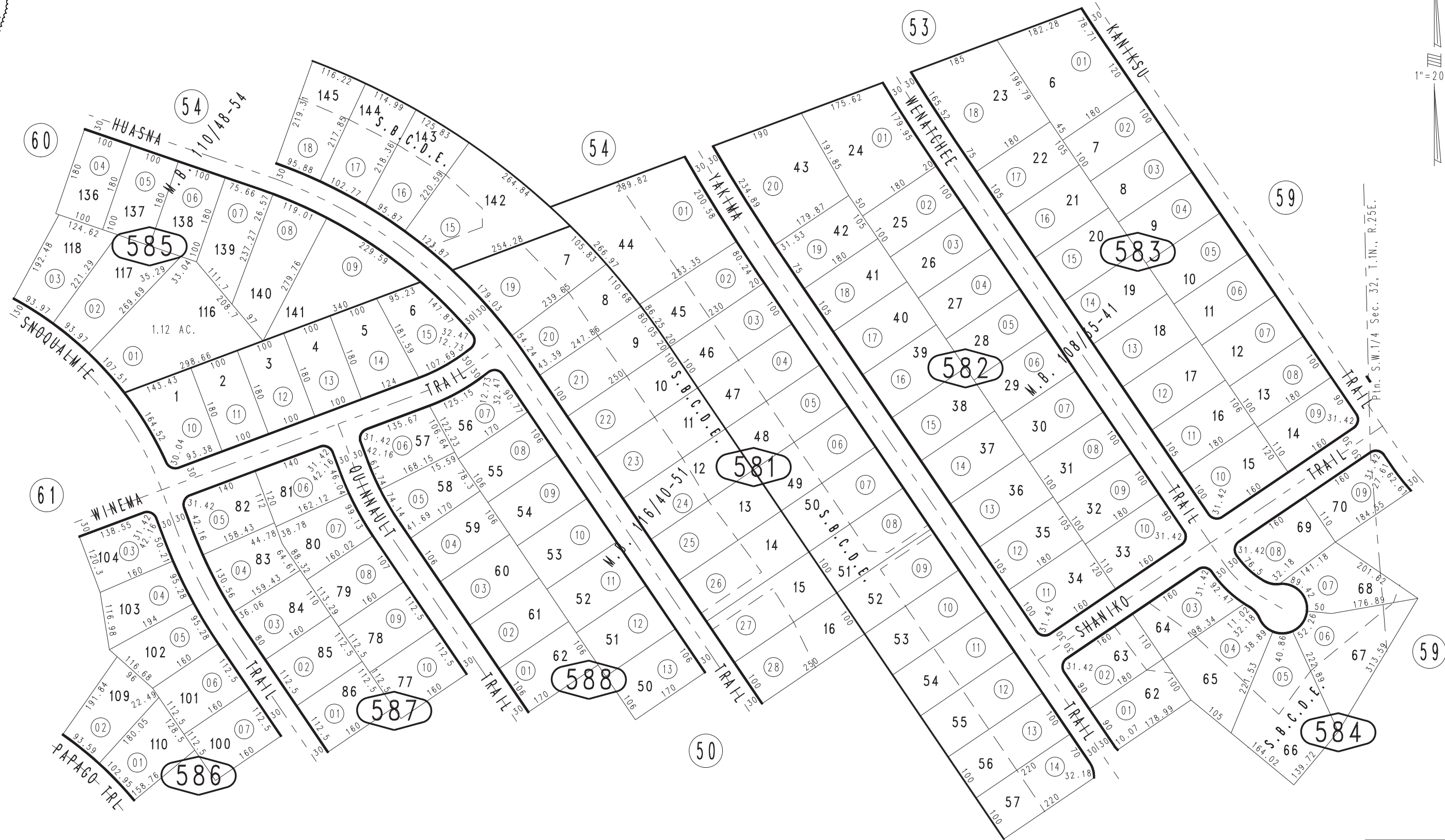


THIS MAP IS FOR THE PURPOSE  
OF AD VALOREM TAXATION ONLY.

Ptn. Tract No. 8162, M.B. 108/35-41

Needles Unified  
Tax Rate Area  
96014

0661 - 58



Ptn. Tract No. 8237, M.B. 116/40-51  
Ptn. Tract No. 8192, M.B. 110/48-54

Ptn. S.1/2, Sec. 31  
T.1N., R.25E.

Assessor's Map  
Book 0661 Page 58  
San Bernardino County

REVISED  
09/27/12 GW-MC

July 2005