

THIS MAP IS FOR THE PURPOSE
OF AD VALOREM TAXATION ONLY.

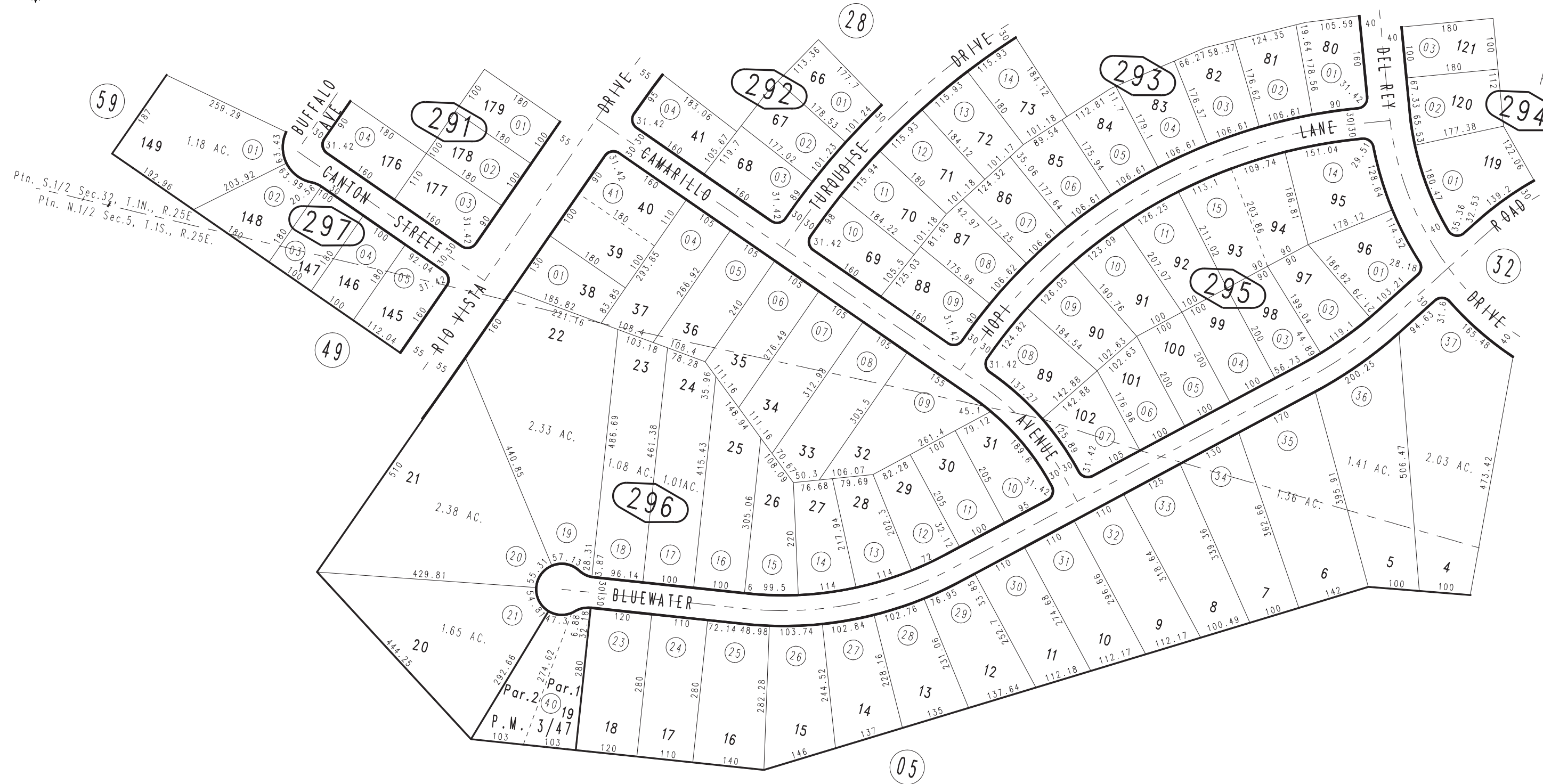
Ptn. Tract No. 7422, M.B. 99/65-91
Amending Map, M.B. 107/62-89

Needles Unified
Tax Rate Area
96014

0661 - 29



1"=200'



Ptn. S.1/2 Sec. 32, T.1N., R.25E
Ptn. N.1/2 Sec. 5, T.1S., R.25E.

Par. 1
Par. 2
P.M. 3/47

Ptn. S.1/2 Sec. 32
T.1N., R.25E.
Ptn. N.1/2 Sec. 5
T.1S., R.25E.

Assessor's Map
Book 0661 Page 29
San Bernardino County

REVISED
12/09/14 KC
04/03/15 KC