

THIS MAP IS FOR THE PURPOSE
OF AD VALOREM TAXATION ONLY.

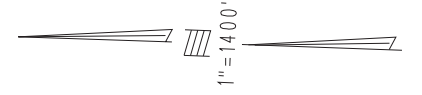


Fractional Sec.18,19,&30 & Sec.29, T.2N.,R.26E., S.B.B.&M.

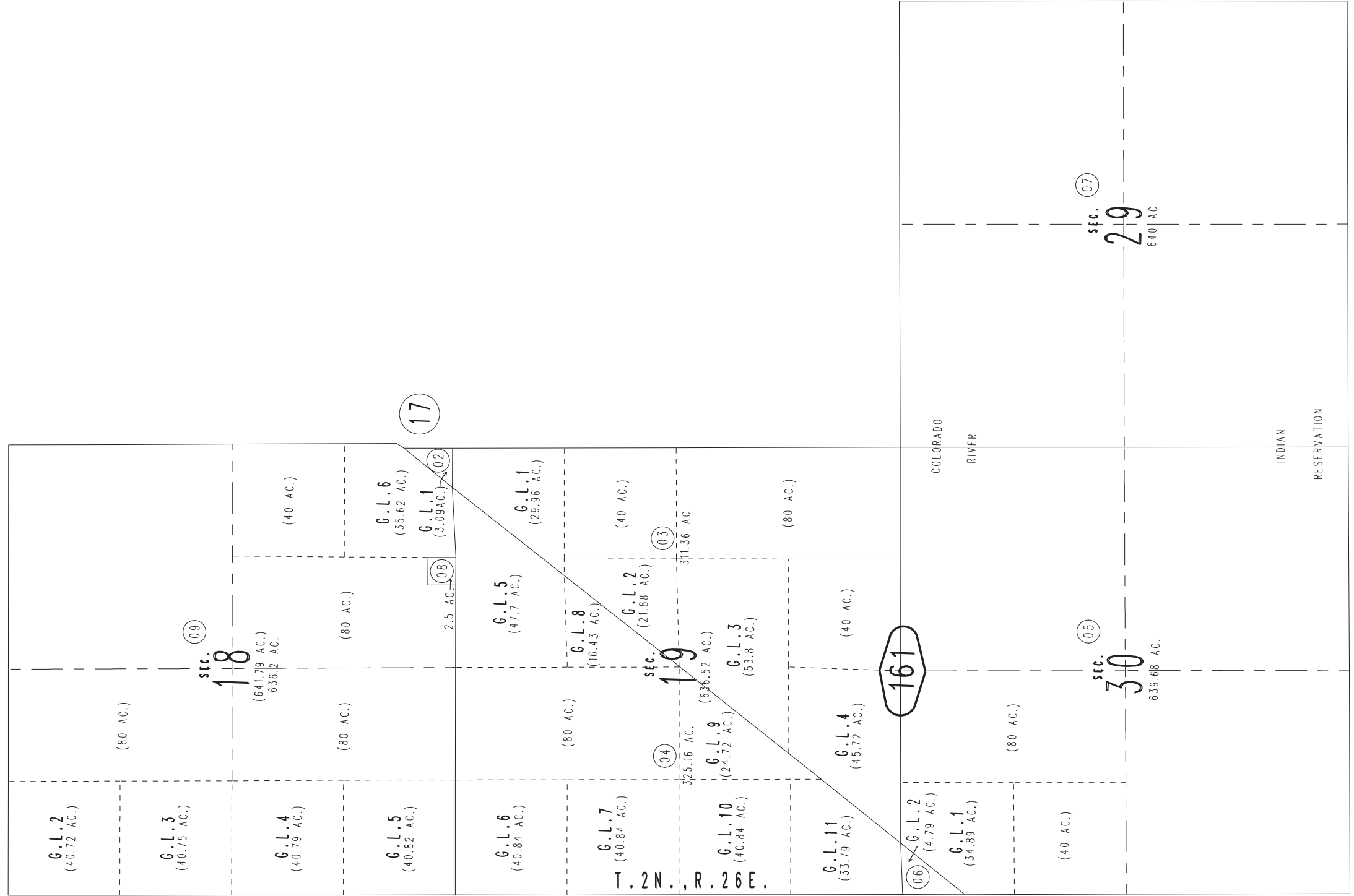
Needles Unified
Tax Rate Area
96005

0661 - 16

15



18



11

July 2005

01

02

10

Assessor's Map
Book 0661 Page 16
San Bernardino County

REVISED
06/08/23 KC-MC