

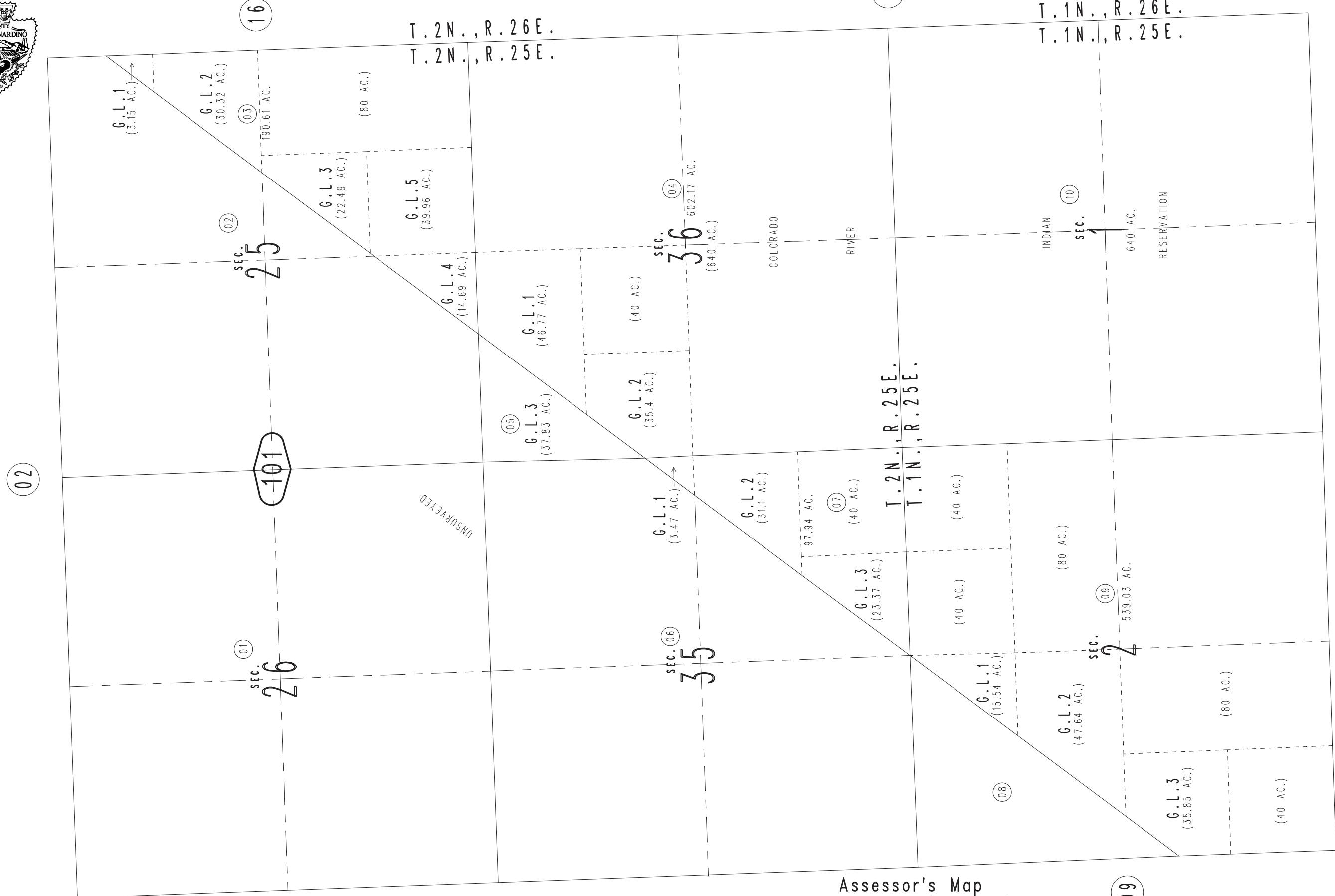
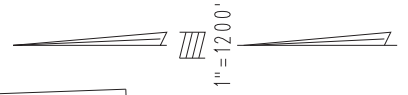
THIS MAP IS FOR THE PURPOSE
OF AD VALOREM TAXATION ONLY.



Sec.25,26,35,&36, T.2N.,R.25E., & Sec.1&2, T.1N.,R.25E., S.B.B.&M.

Needles Unified
Tax Rate Area
96005

0661 - 10



July 2005

Assessor's Map
Book 0661 Page 10
San Bernardino County

REVISED
03/01/13 RM-MC