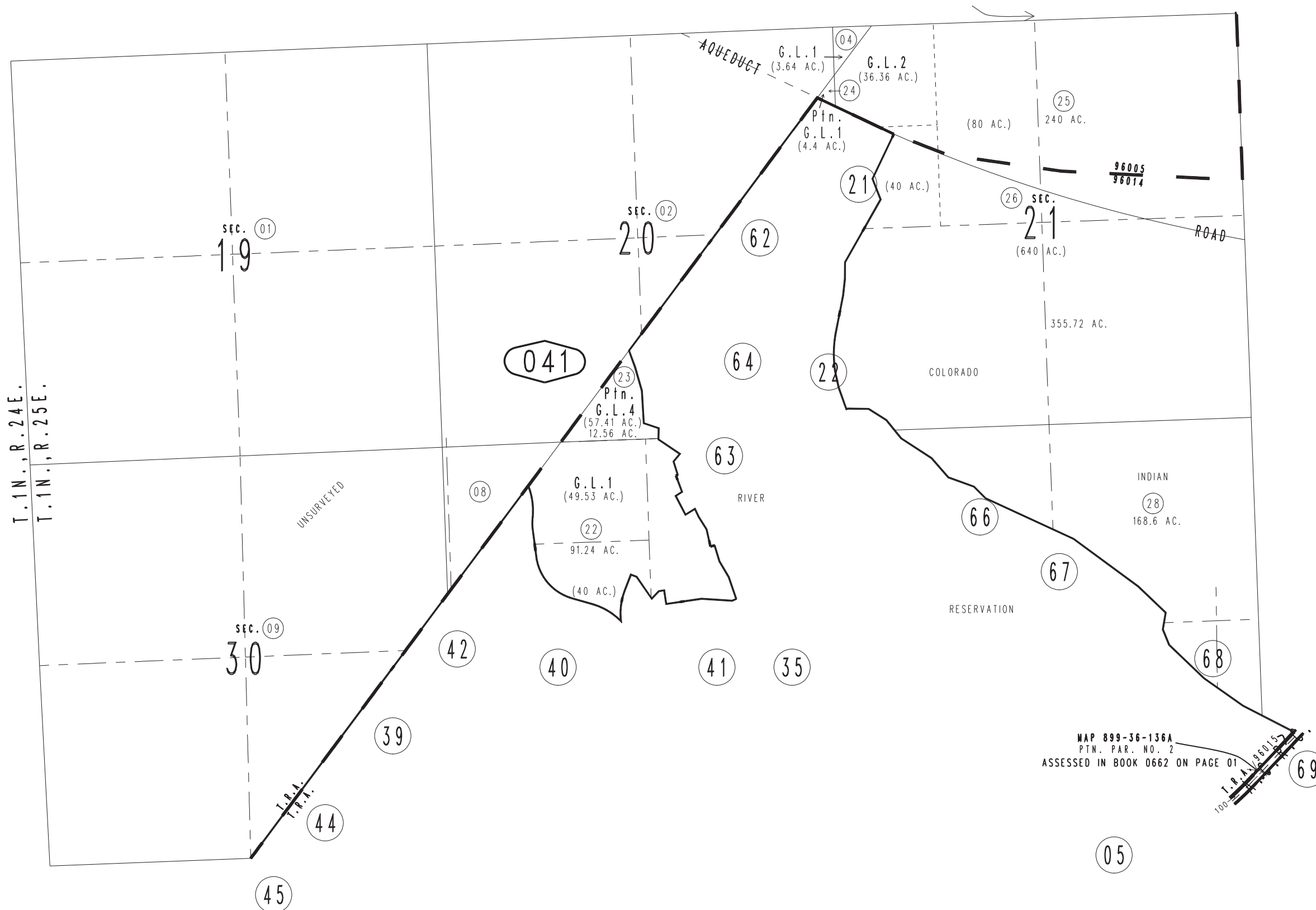
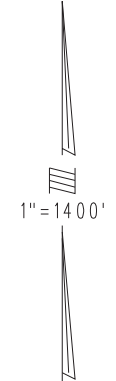


THIS MAP IS FOR THE PURPOSE OF AD VALOREM TAXATION ONLY.

Sec.19,20,21,30,29,&28, T.1N.,R.25E., S.B.B.&M.

Needles Unified Tax Rate Area 96005 96014 96015

0661 - 04



0647
30

0662
01

0662
03

MAP 899-36-136A
PTN. PAR. NO. 2
ASSESSED IN BOOK 0662 ON PAGE 01

Assessor's Map
Book 0661 Page 04
San Bernardino County

REVISED
06/06/23 KC-MC