

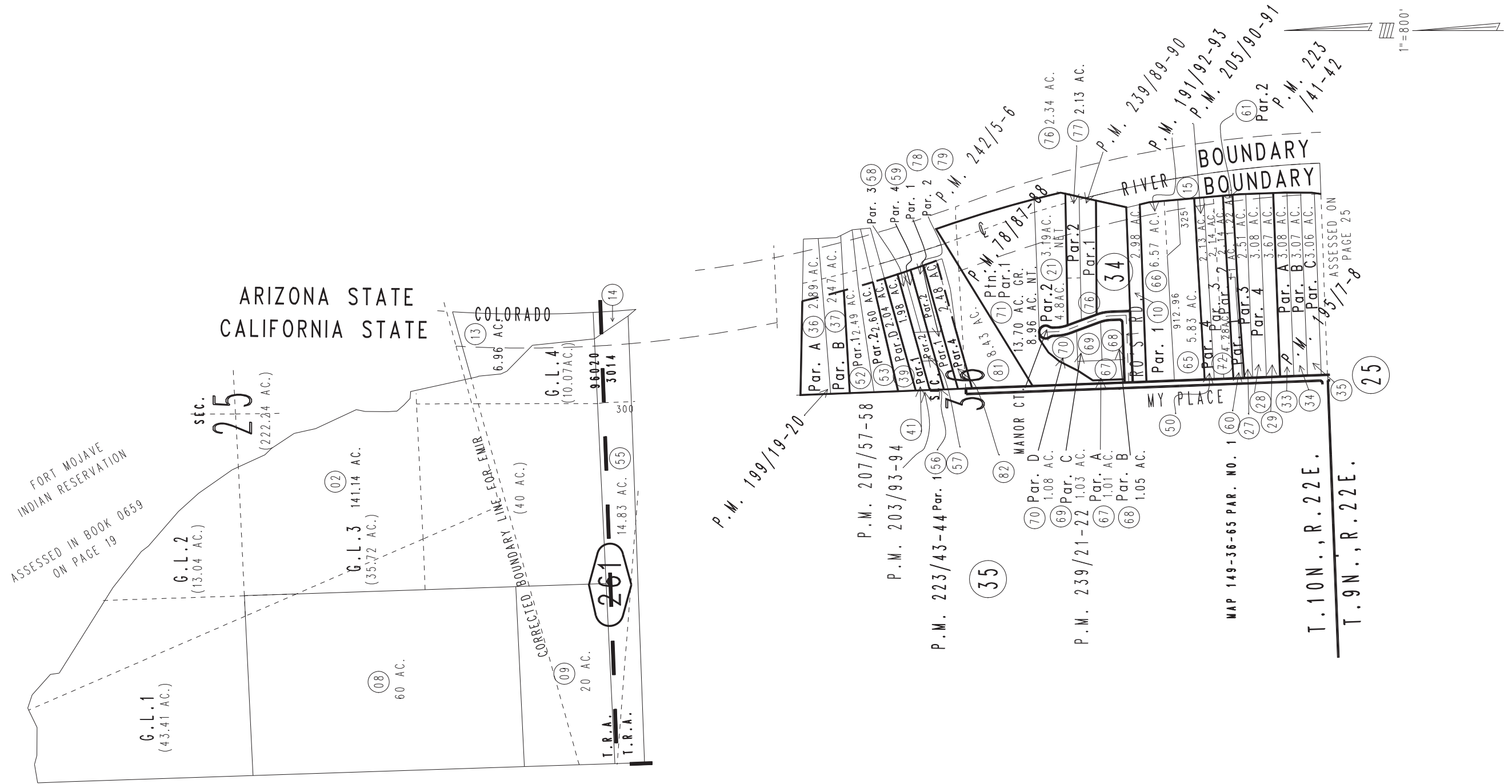
THIS MAP IS FOR THE PURPOSE OF AD VALOREM TAXATION ONLY.



Ptn. Fractional Sec.25&36, T.10N.,R.22E., S.B.B.&M.

City of Needles  
Needles Unified  
Tax Rate Area  
3014 96020

0660-26



- Parcel Map No. 19033, P.M. 239/89-90
- Parcel Map No. 19257, P.M. 239/21-22
- Parcel Map No. 16842, P.M. 223/43-44
- Parcel Map No. 18845, P.M. 223/41-42
- Parcel Map No. 16761, P.M. 207/57-58
- Parcel Map No. 16504, P.M. 205/90-91
- Parcel Map No. 16464, P.M. 203/93-94
- Parcel Map No. 15871, P.M. 199/19-20
- Ptn. Parcel Map No. 15740, P.M. 195/7-8
- Parcel Map No. 15570, P.M. 191/92-93
- Ptn. Parcel Map No. 7319, P.M. 78/87-88

Parcel Map No. 19348, P.M. 242/5-6

0659  
20

May 2005

Assessor's Map  
Book 0660 Page 26  
San Bernardino County

REVISED  
01/15/16 RU  
01/19/16 RU  
02/06/19 RU