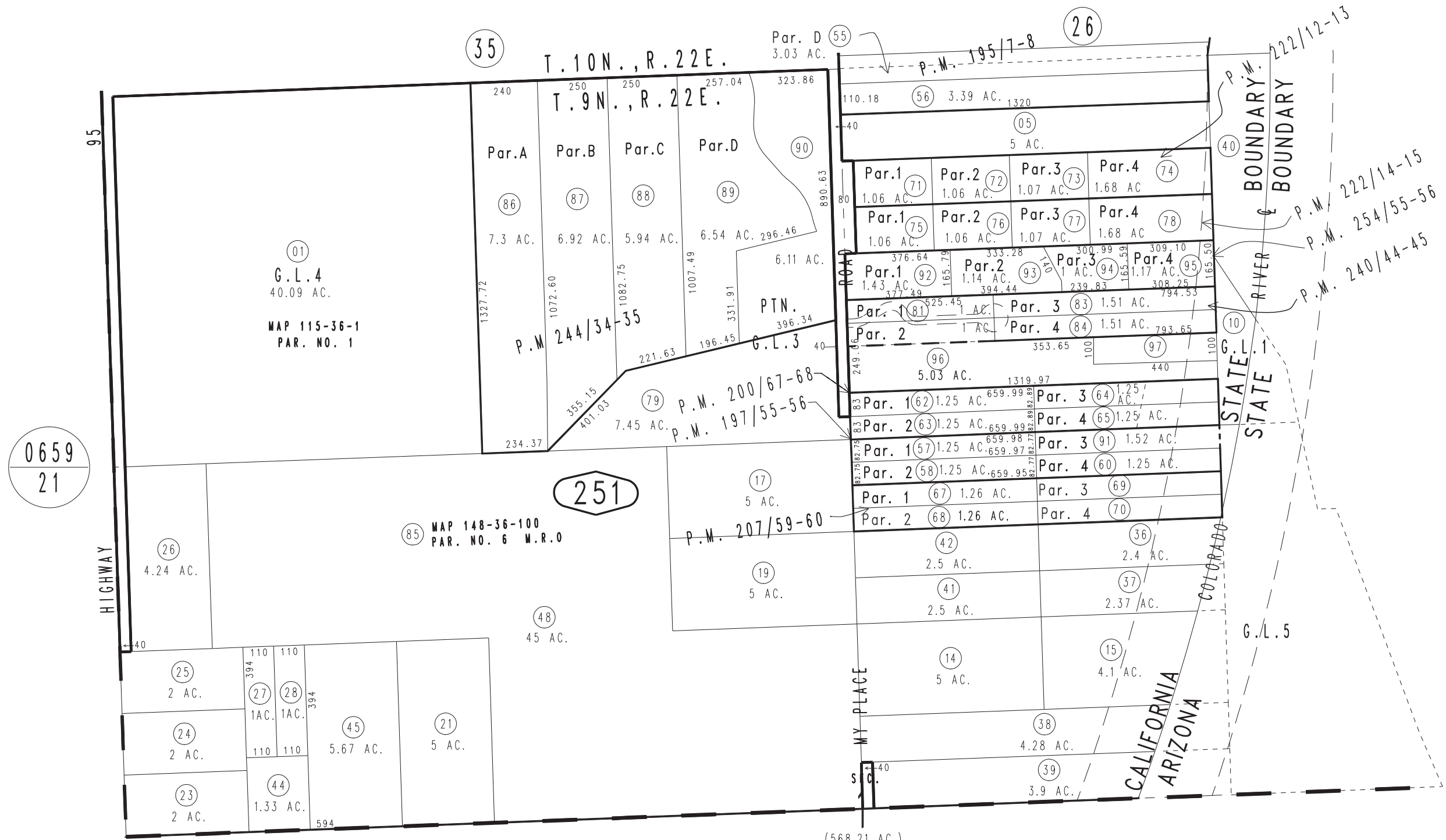


THIS MAP IS FOR THE PURPOSE OF AD VALOREM TAXATION ONLY.

N.1/2 Fractional Sec.1, T.9N.,R.22E., S.B.B.&M.

City of Needles
Tax Rate Area
3014

0660-25



- Parcel Map No. 19340, P.M. 244/34-35
- Parcel Map No. 19254, P.M. 240/44-45
- Parcel Map No. 17910, P.M. 222/14-15
- Parcel Map No. 17909, P.M. 222/12-13
- Parcel Map No. 16711, P.M. 207/59-60
- Parcel Map No. 15673, P.M. 198/3-4, Amended P.M. 200/67-68
- Parcel Map No. 15631, P.M. 197/55-56
- Ptn. Parcel Map No. 15740, P.M. 195/7-8

Parcel Map No. 19700, P.M. 254/55-56

Assessor's Map
Book 0660 Page 25
San Bernardino County

REVISED
08/19/24 KA