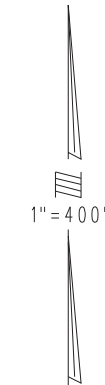


THIS MAP IS FOR THE PURPOSE OF AD VALOREM TAXATION ONLY.

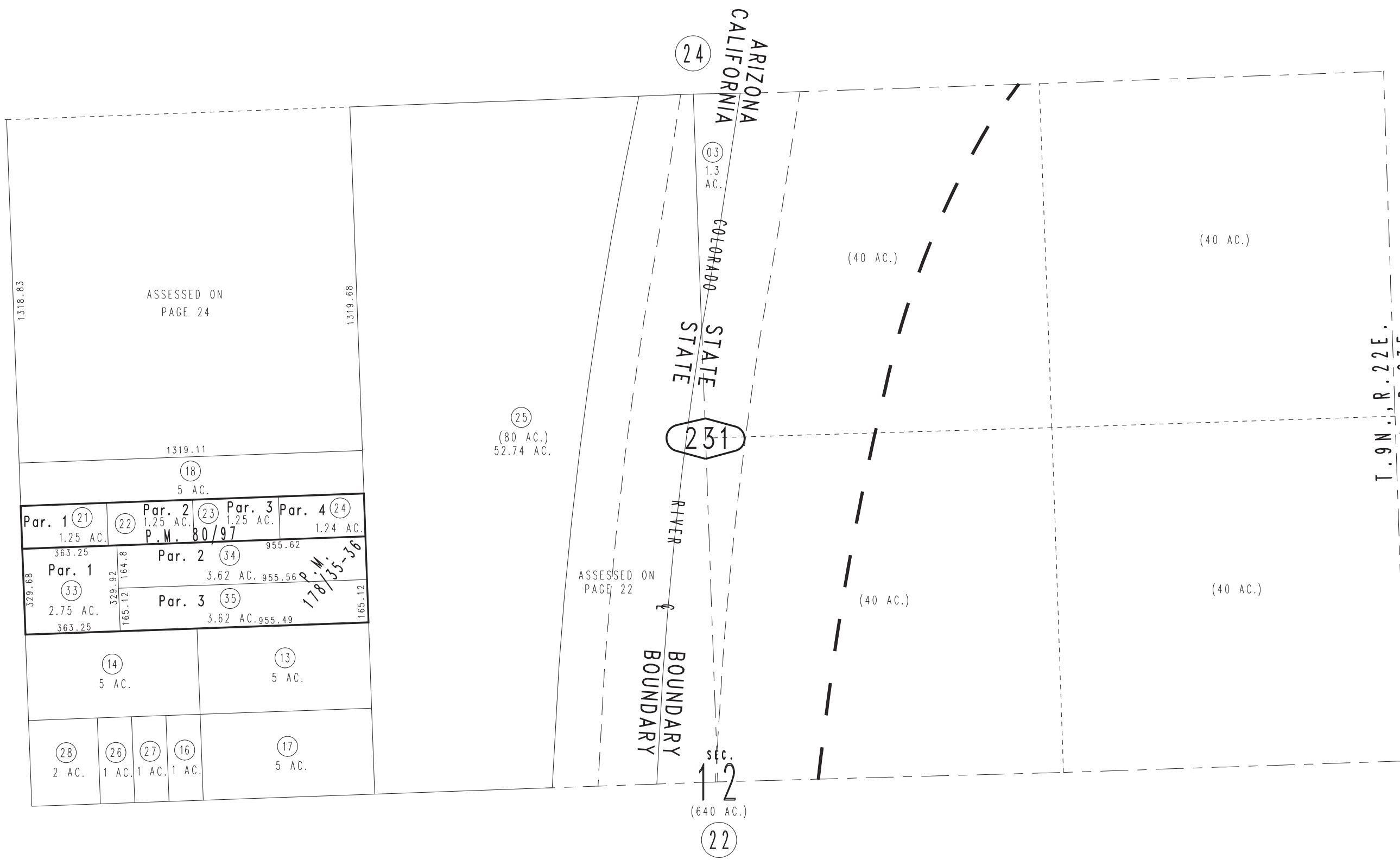
N.1/2 Sec.12, T.9N.,R.22E., S.B.B.&M.

City Of Needles
Tax Rate Area
3001

0660-23



0659
21



May 2005

Parcel Map No. 14772, P.M. 178/35-36
Parcel Map No. 7491, P.M. 80/97

Assessor's Map
Book 0660 Page 23
San Bernardino County

REVISED
10/17/12 GW
10/19/12 BK-MC
08/01/13 RM-MC
04/15/14 RU