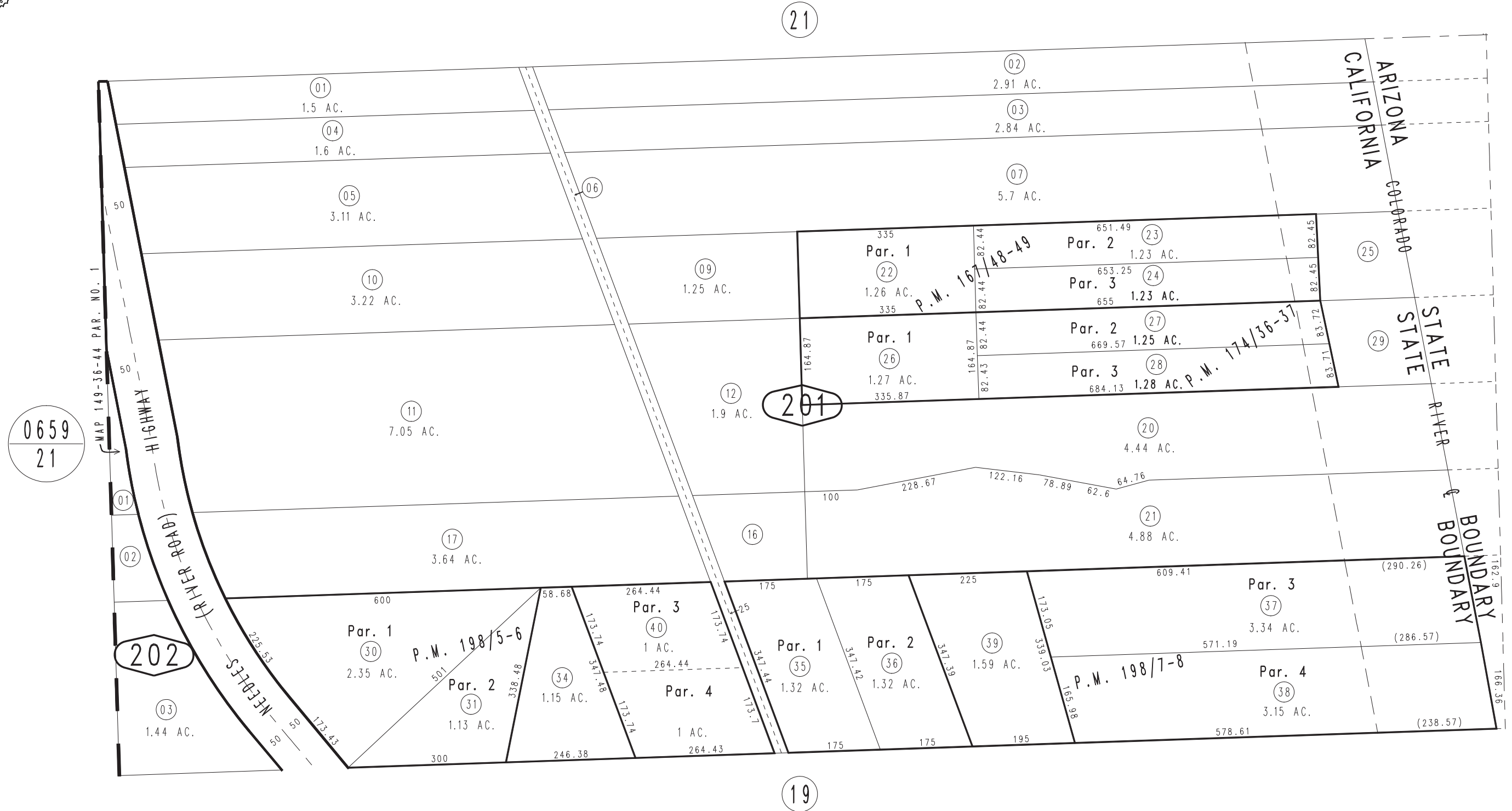


THIS MAP IS FOR THE PURPOSE
OF AD VALOREM TAXATION ONLY.

N.1/2, N.W.1/4 Sec.13, T.9N.,R.22E., S.B.B.&M.

City of Needles
Tax Rate Area
3012

0660-20



Parcel Map No. 15904, P.M. 198/7-8
 Parcel Map No. 15903, P.M. 198/5-6
 Parcel Map No. 14275, P.M. 174/36-37
 Parcel Map No. 14166, P.M. 167/48-49

May 2005

Assessor's Map
 Book 0660 Page 20
 San Bernardino County

REVISED
 07/29/15 KC