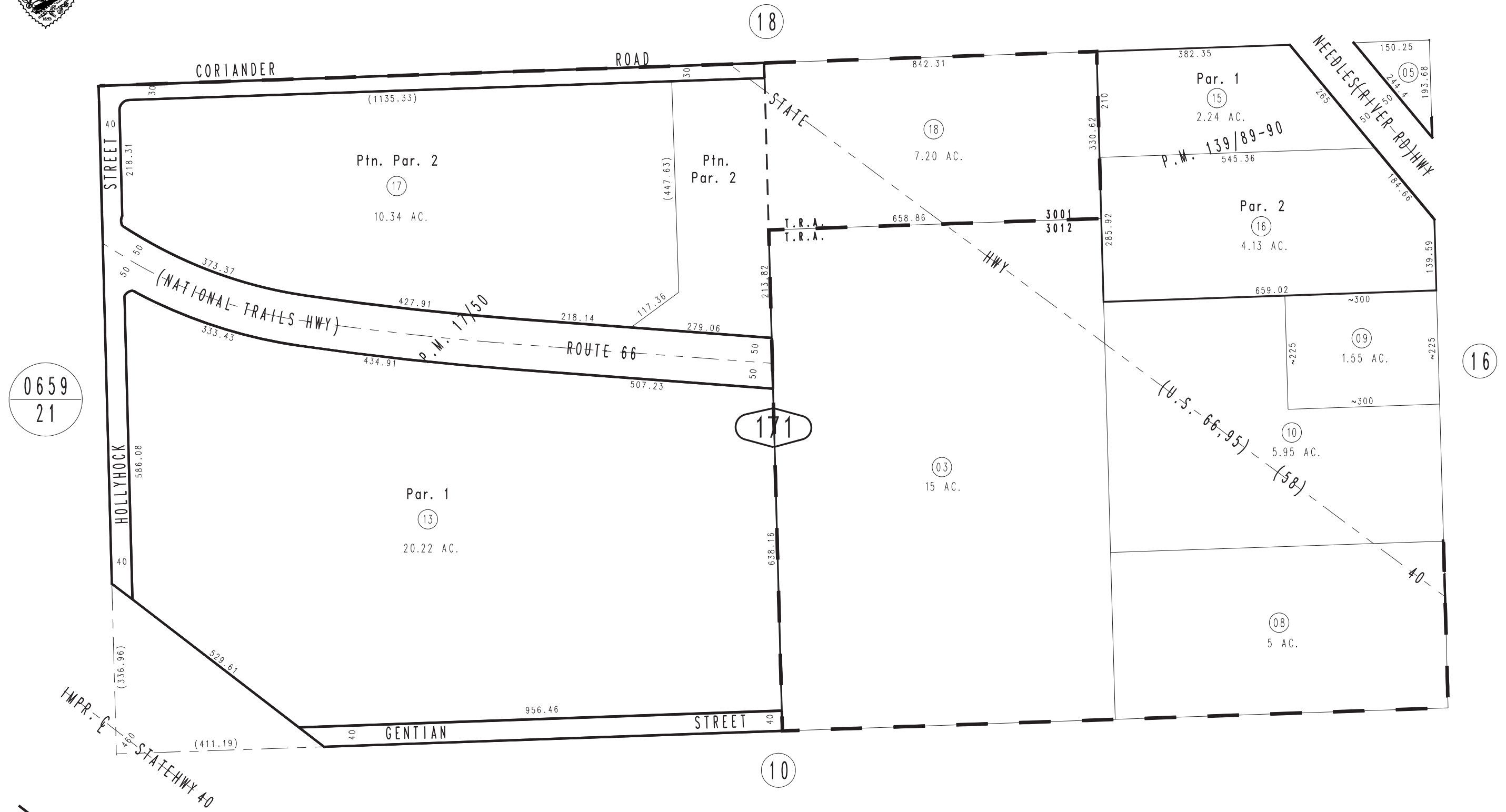


THIS MAP IS FOR THE PURPOSE
OF AD VALOREM TAXATION ONLY.

S.1/2, S.W.1/4 Sec.13, T.9N.,R.22E., S.B.B.&M.

City of Needles
Tax Rate Area
3001 3012

0660-17



May 2005

Parcel Map No. 12368, P.M. 139/89-90
Parcel Map No. 1812, P.M. 17/50

Assessor's Map
Book 0660 Page 17
San Bernardino County

REVISED
02/27/13 RM