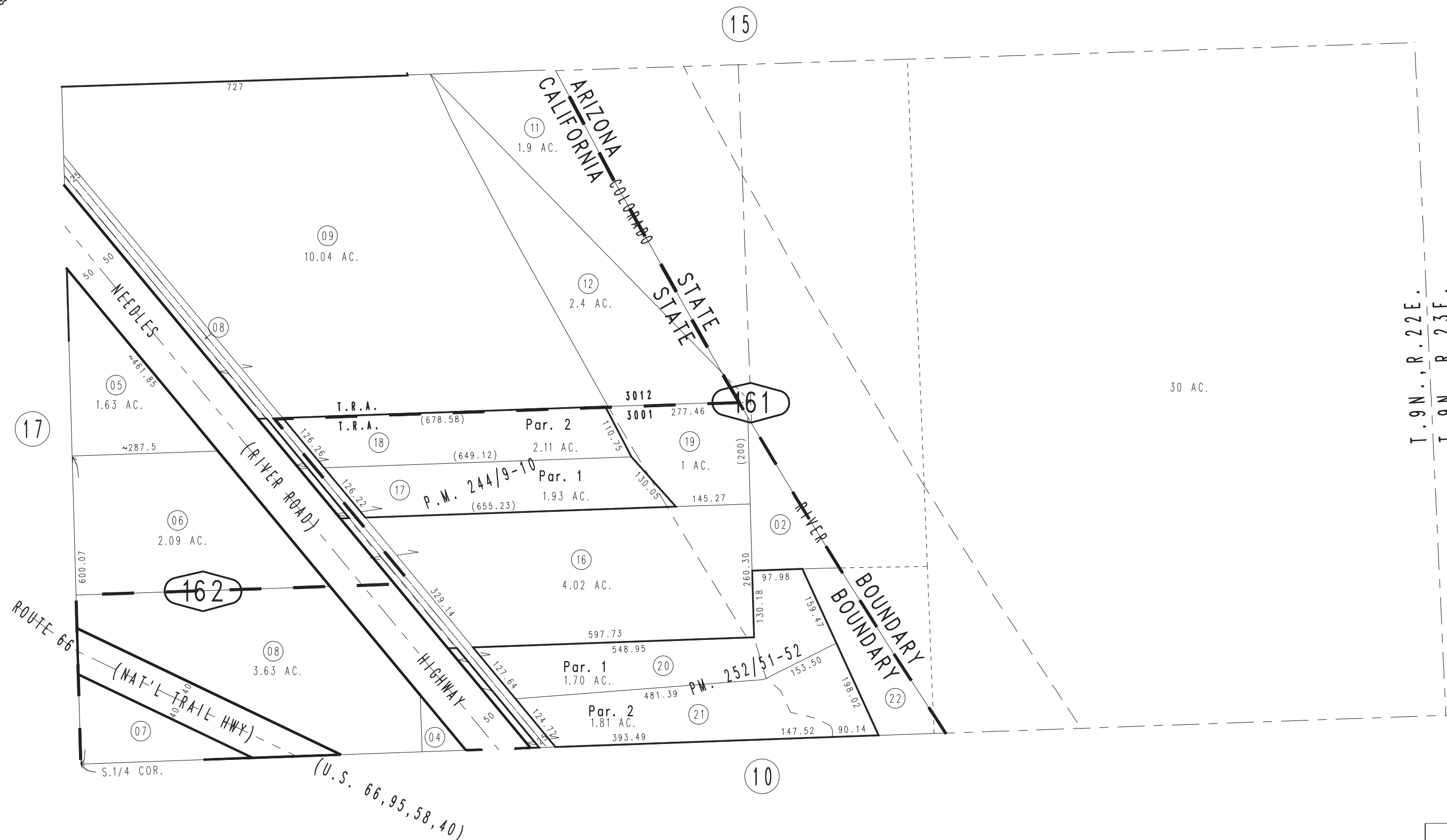


THIS MAP IS FOR THE PURPOSE  
OF AD VALOREM TAXATION ONLY.

S.1/2, S.E.1/4, Sec.13, T.9N.,R.22E., S.B.B.&M.

City of Needles  
Tax Rate Area  
3001 3012

0660-16



May 2005

Parcel Map No. 19932, P.M. 252/51-52  
Parcel Map No. 19438, P.M. 244/9-10

Assessor's Map  
Book 0660 Page 16  
San Bernardino County

REVISED  
09/06/19 GW