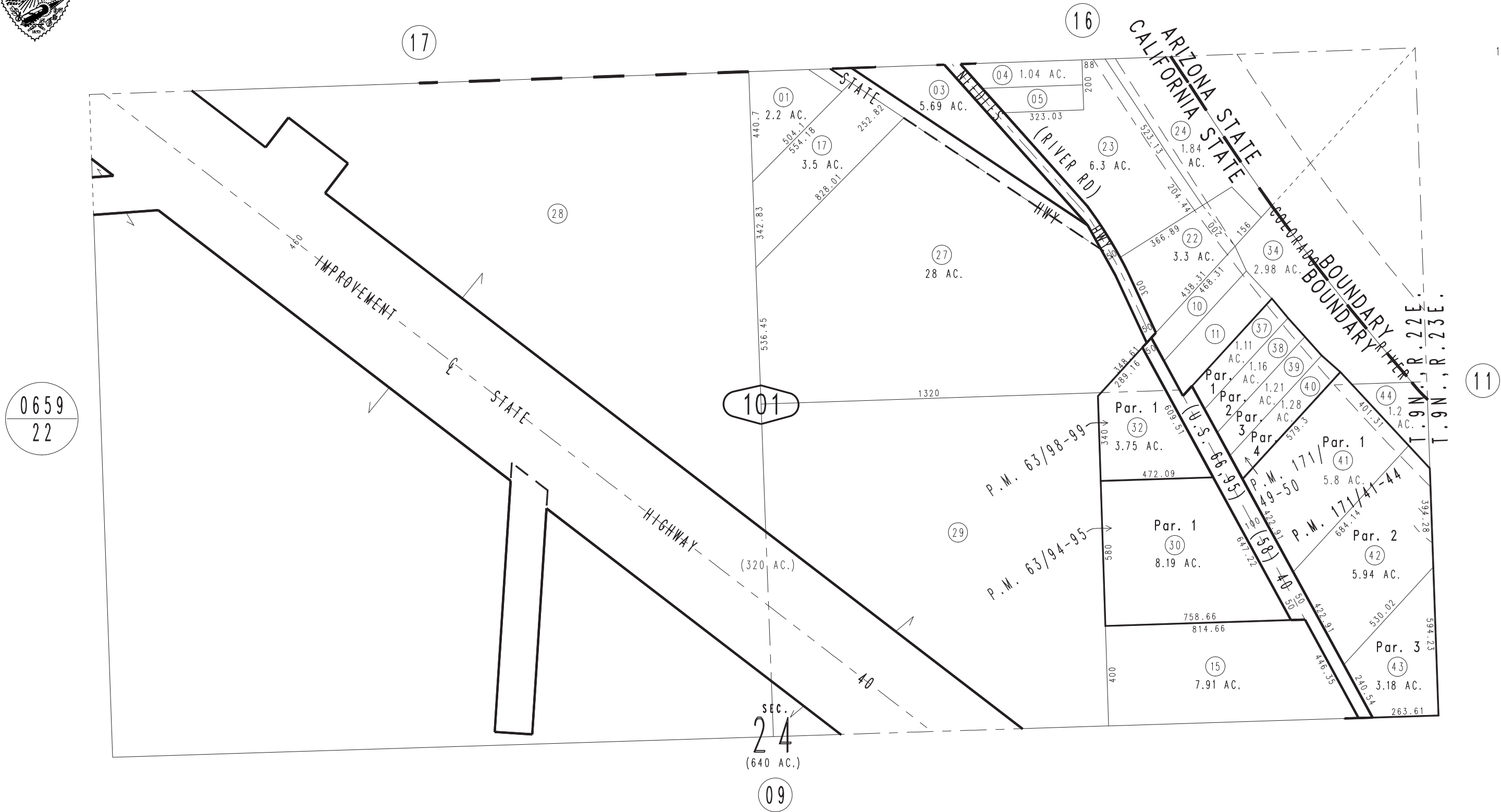


THIS MAP IS FOR THE PURPOSE
OF AD VALOREM TAXATION ONLY.

N.1/2 Sec.24, T.9N.,R.22E., S.B.B.&M.

City of Needles
Tax Rate Area
3001

0660-10



0659
22

Parcel Map No. 14332, P.M. 171/41-44
Parcel Map No. 14350, P.M. 171/49-50
Ptn. Parcel Map No. 6626, P.M. 63/98-99
Ptn. Parcel Map No. 4784, P.M. 63/94-95

May 2005

Assessor's Map
Book 0660 Page 10
San Bernardino County

REVISED
03/24/09 KC