

THIS MAP IS FOR THE PURPOSE
OF AD VALOREM TAXATION ONLY.

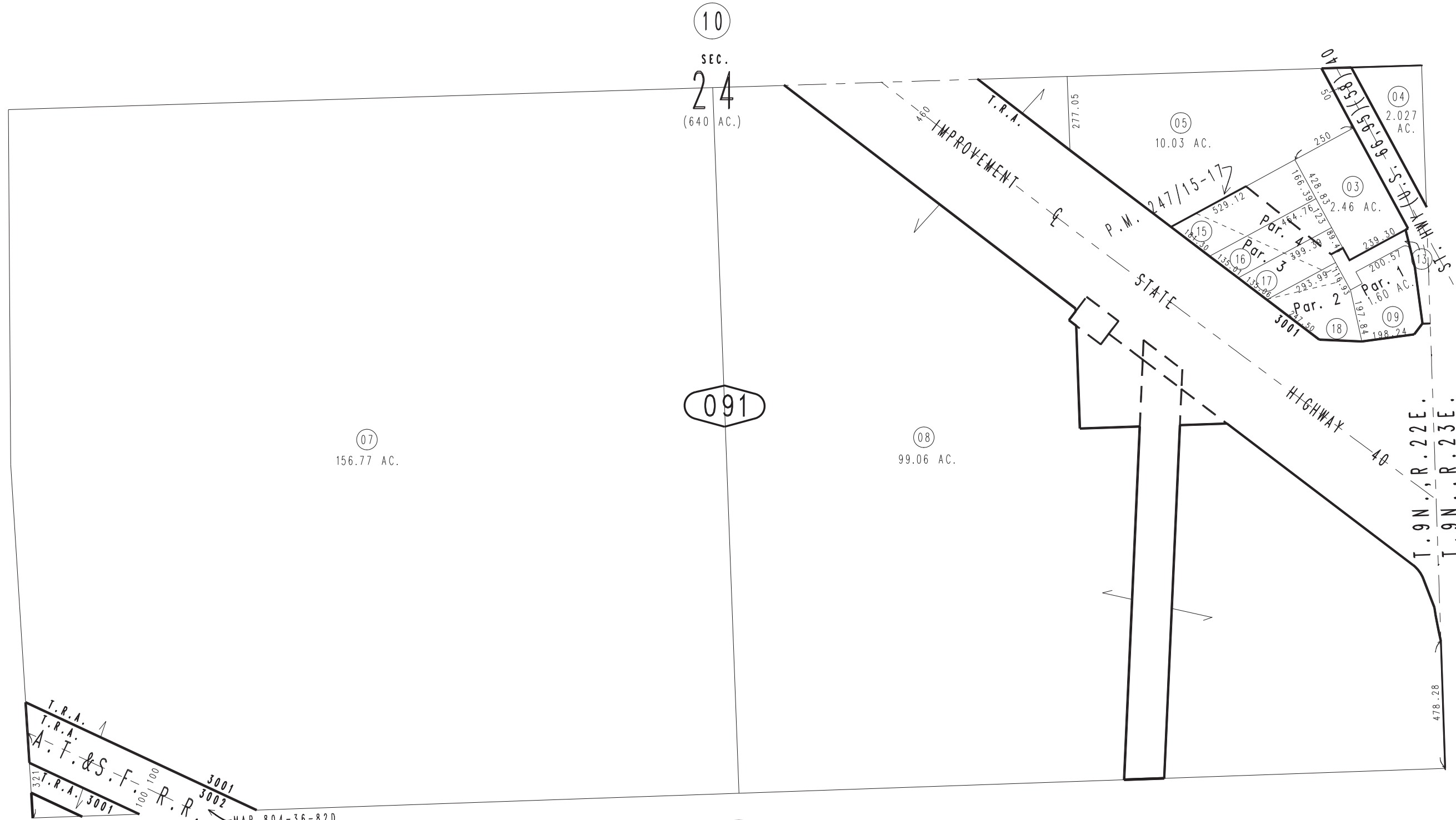
S.1/2 Sec.24, T.9N.,R.22E., S.B.B.&M.

City of Needles
Tax Rate Area
3001,3002

0660-09



0659
22



MAP 804-36-82D
PTN. PAR. NO. 1
ASSESSED IN BOOK 0659 ON PAGE 22

0659
22

REVISED
02/24/20 KC

Assessor's Map
Book 0660 Page 09
San Bernardino County