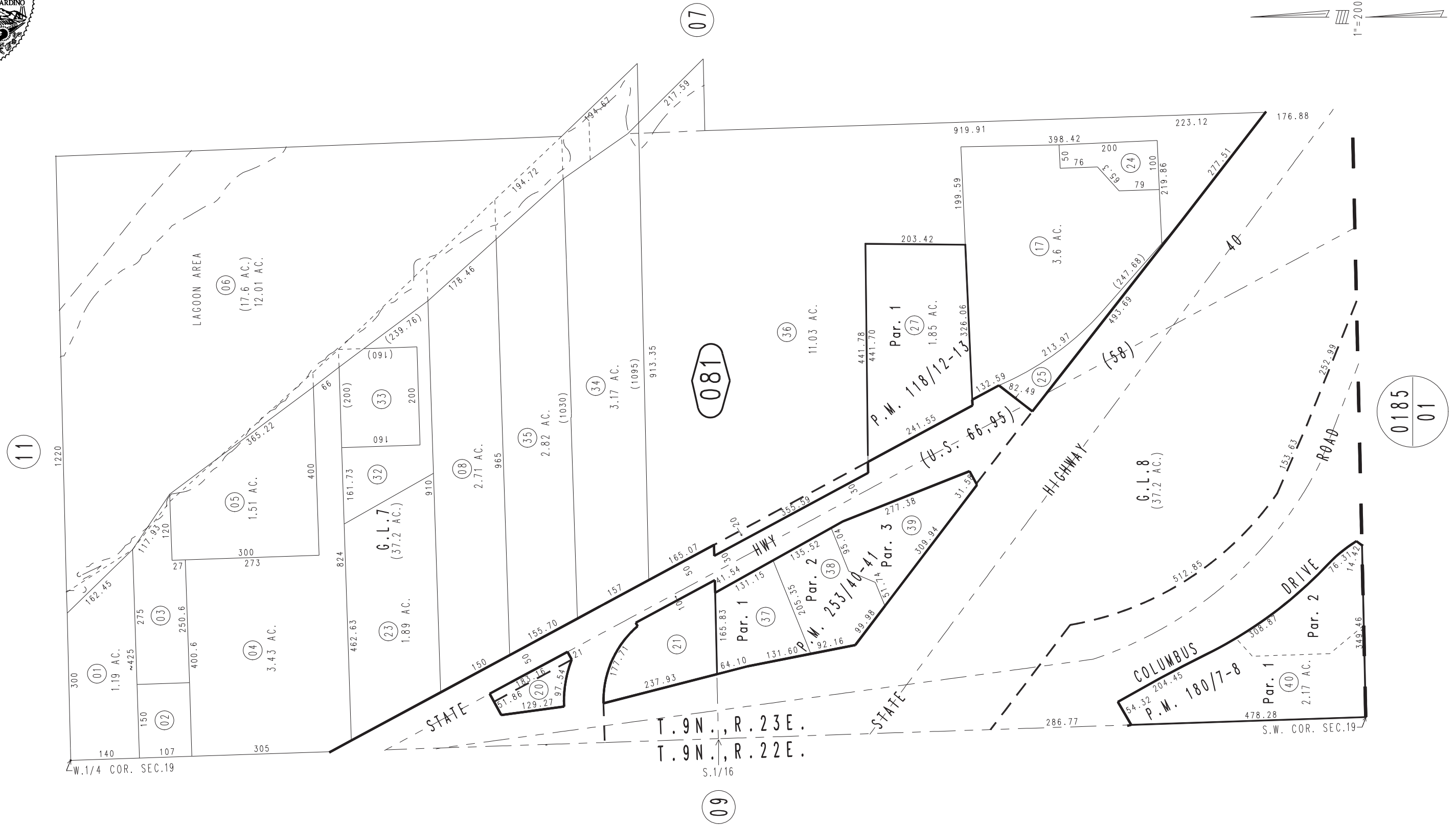
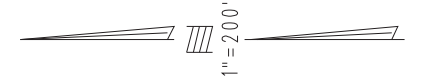


THIS MAP IS FOR THE PURPOSE  
OF AD VALOREM TAXATION ONLY.

Ptn. S.W.1/4 Sec.19, T.9N.,R.23E., S.B.B.&M.

City of Needles  
Tax Rate Area  
3001

0660-08



May 2005

Parcel Map No. 19995, P.M. 253/40-41  
Parcel Map No. 14798, P.M. 180/7-8  
Parcel Map No. 10488, P.M. 118/12-13

Assessor's Map  
Book 0660 Page 08  
San Bernardino County

REVISED  
03/30/23 KA