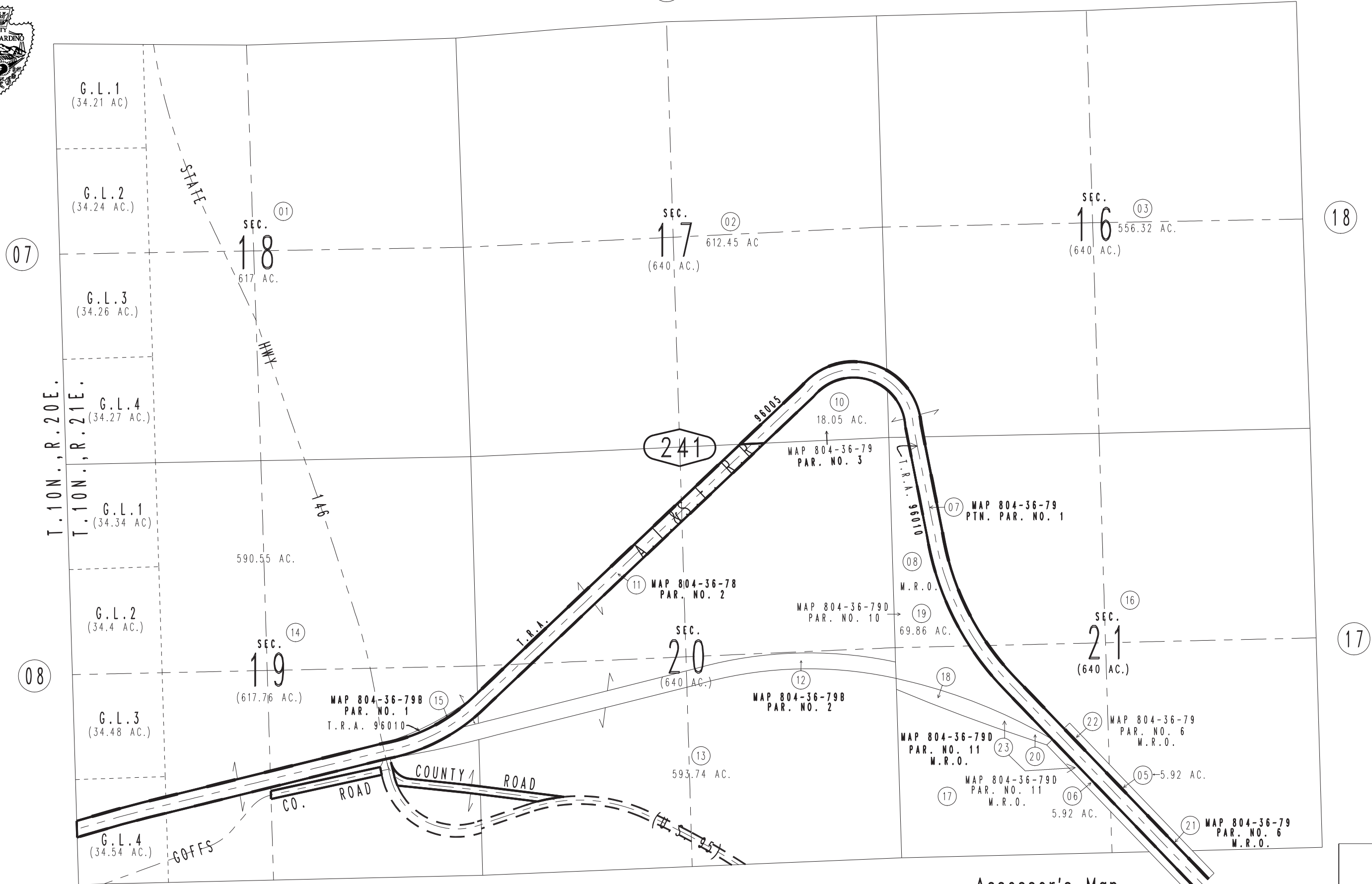


THIS MAP IS FOR THE PURPOSE OF AD VALOREM TAXATION ONLY.

Sec.16,17,20,21 & Fractional Sec.18,19, T.10N.,R.21E., S.B.B.&M.

Needles Unified Tax Rate Area 96005,96010

0659-24



Assessor's Map Book 0659 Page 24 San Bernardino County

REVISED