

THIS MAP IS FOR THE PURPOSE
OF AD VALOREM TAXATION ONLY.



Sec.4&9 Fractional Sec.3&10, T.11N.,R.20E., S.B.B.&M.
Tract Nos. 38&42, T.P. 4395 A

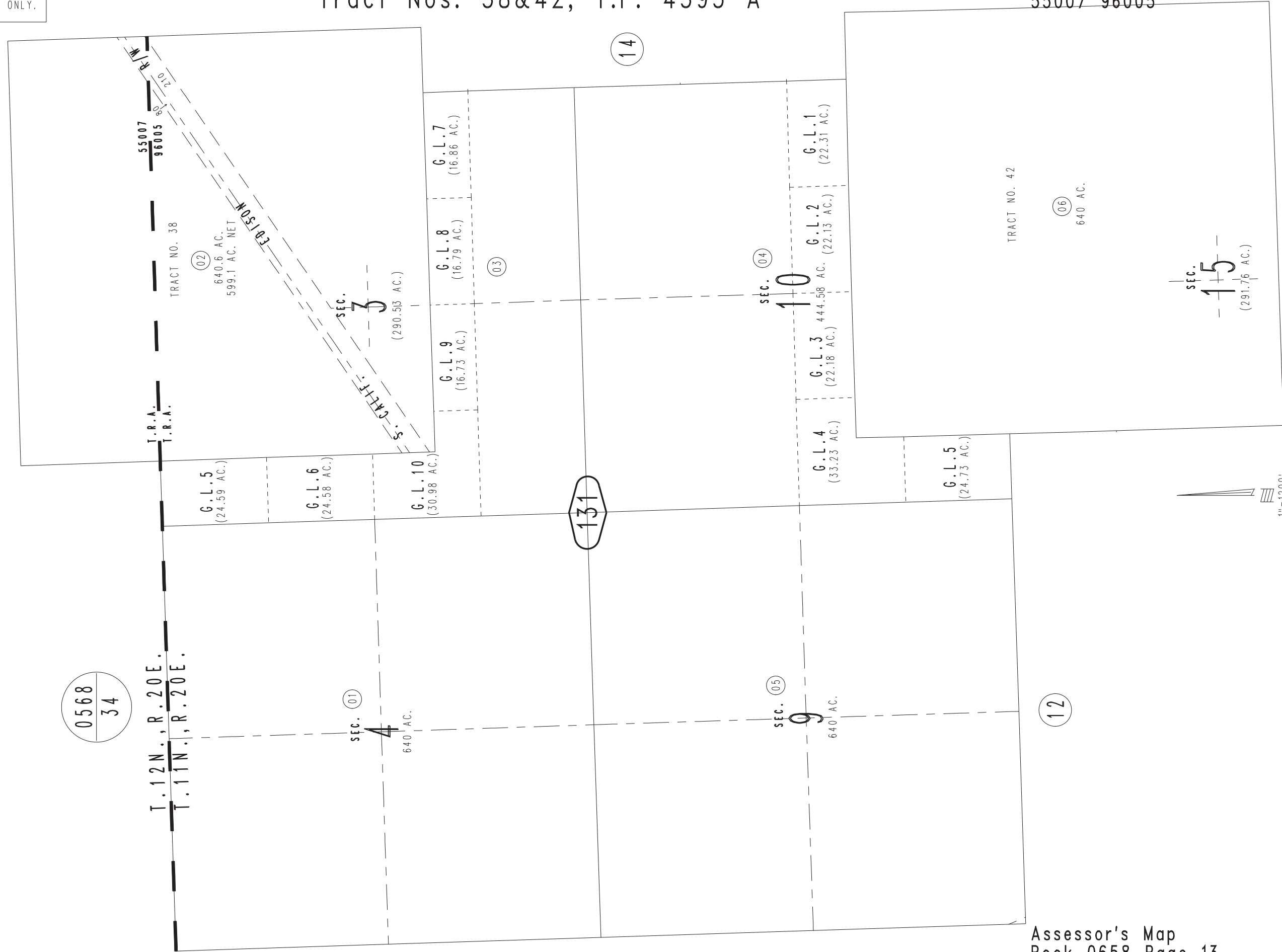
Needles Unified
Tax Rate Area
55007 96005

0658-13

0568
36

0568
34

June 2005



Assessor's Map
Book 0658 Page 13
San Bernardino County

REVISED
02/26/13 RM-MC