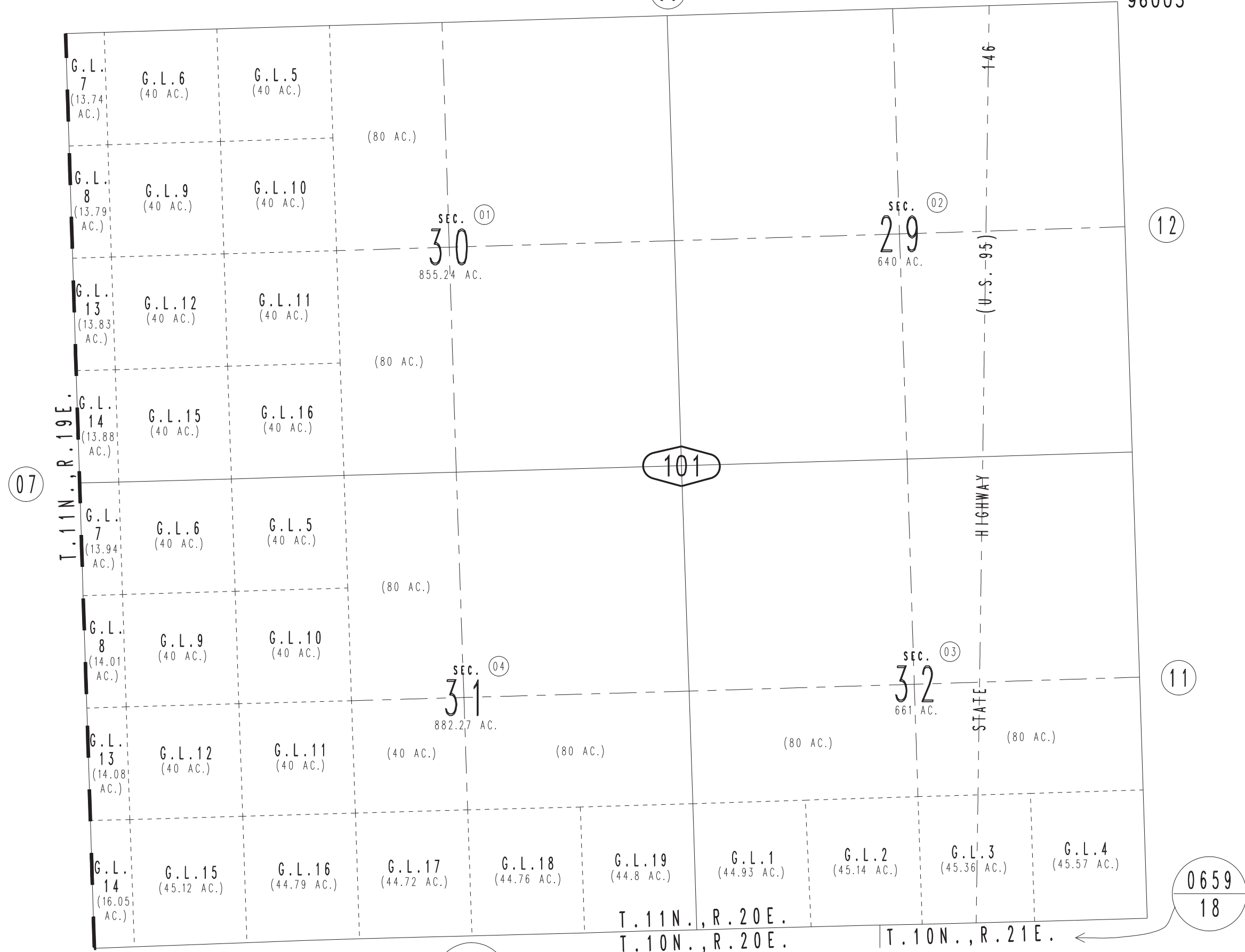
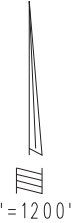


THIS MAP IS FOR THE PURPOSE  
OF AD VALOREM TAXATION ONLY.

# Sec.29 Fractional Sec.30,31,&32, T.11N.,R.20E., S.B.B.&M.

Needles Unified 0658-10  
Tax Rate Area  
96005



07

09

12

101

11

0659  
07

0659  
18

T. 11 N., R. 20 E.  
T. 10 N., R. 20 E.      T. 10 N., R. 21 E.

Assessor's Map  
Book 0658 Page 10  
San Bernardino County