

THIS MAP IS FOR THE PURPOSE OF AD VALOREM TAXATION ONLY.

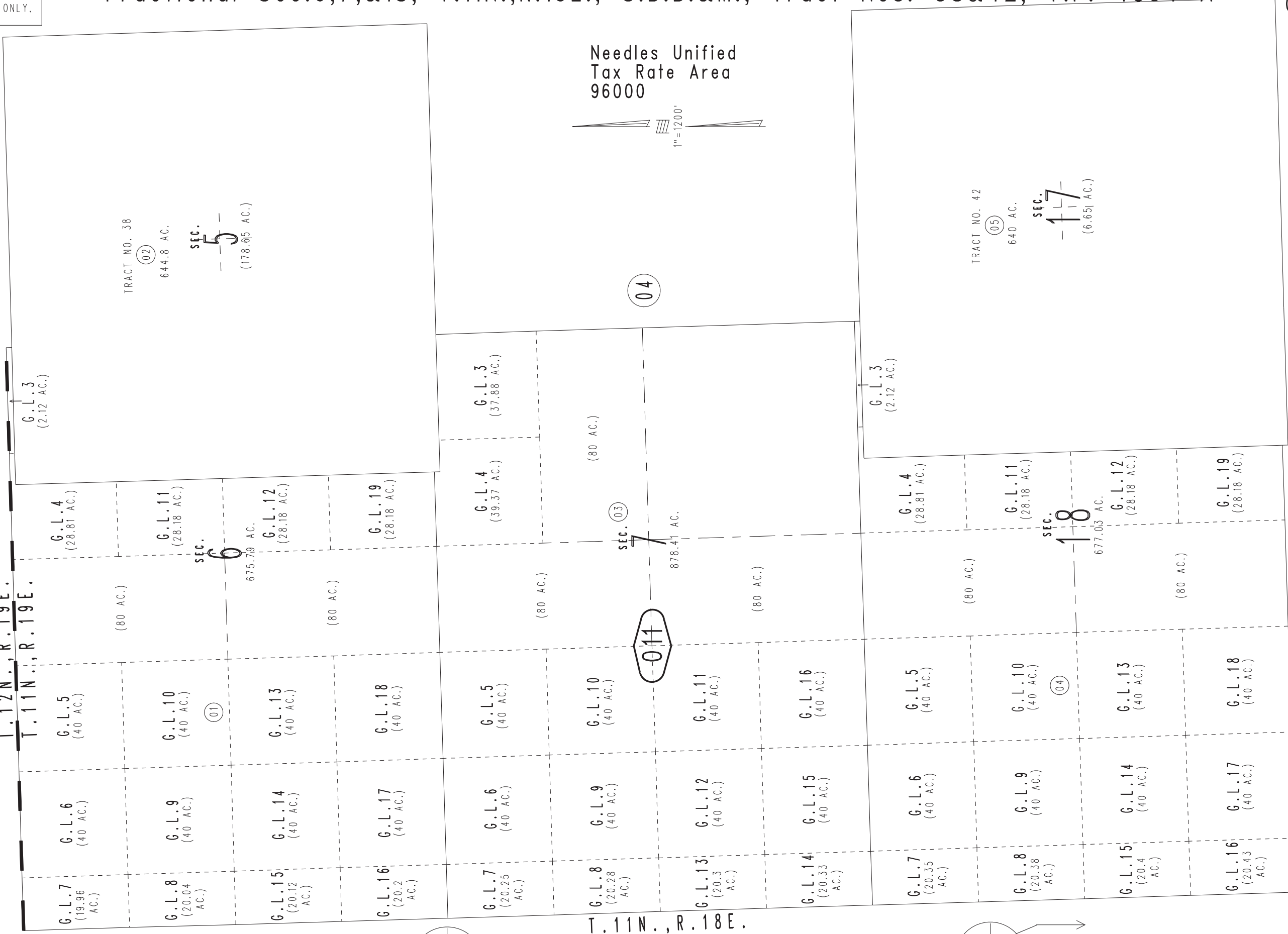


# Fractional Sec.6,7,&18, T.11N.,R.19E., S.B.B.&M., Tract Nos. 38&42, T.P. 4394 A

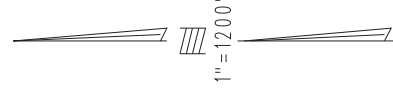
0658-01

T. 12N., R. 19E.  
T. 11N., R. 19E.

0568  
22



Needles Unified  
Tax Rate Area  
96000



TRACT NO. 38  
644.8 AC.  
SEC. 5  
(178.65 AC.)

TRACT NO. 42  
640 AC.  
SEC. 17  
(6.65 AC.)

0657  
26

0657  
27

Assessor's Map  
Book 0658 Page 01  
San Bernardino County

REVISED