

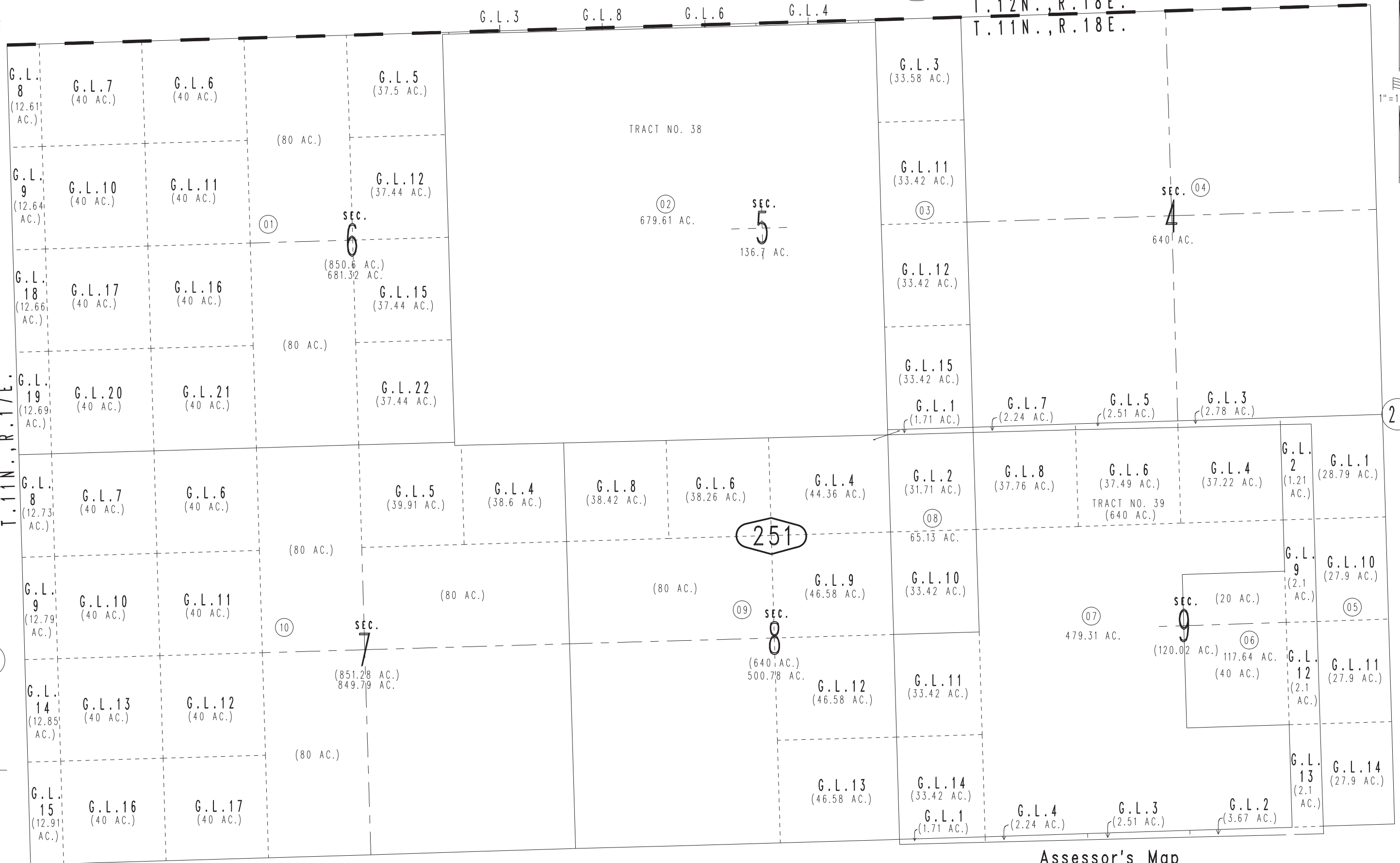
THIS MAP IS FOR THE PURPOSE OF AD VALOREM TAXATION ONLY.

Fractional Sec.5,6,7,8,&9, Sec.4, T.11N.,R.18E., S.B.B.&M. Tract Nos. 38&39, T.P. 4393 A

0568
21

Needles Unified
Tax Rate Area
96000

0657-25



1"=1200'

19

T.11N., R.18E.

21

REVISED

June 2005

24

Assessor's Map
Book 0657 Page 25
San Bernardino County