

THIS MAP IS FOR THE PURPOSE OF AD VALOREM TAXATION ONLY.

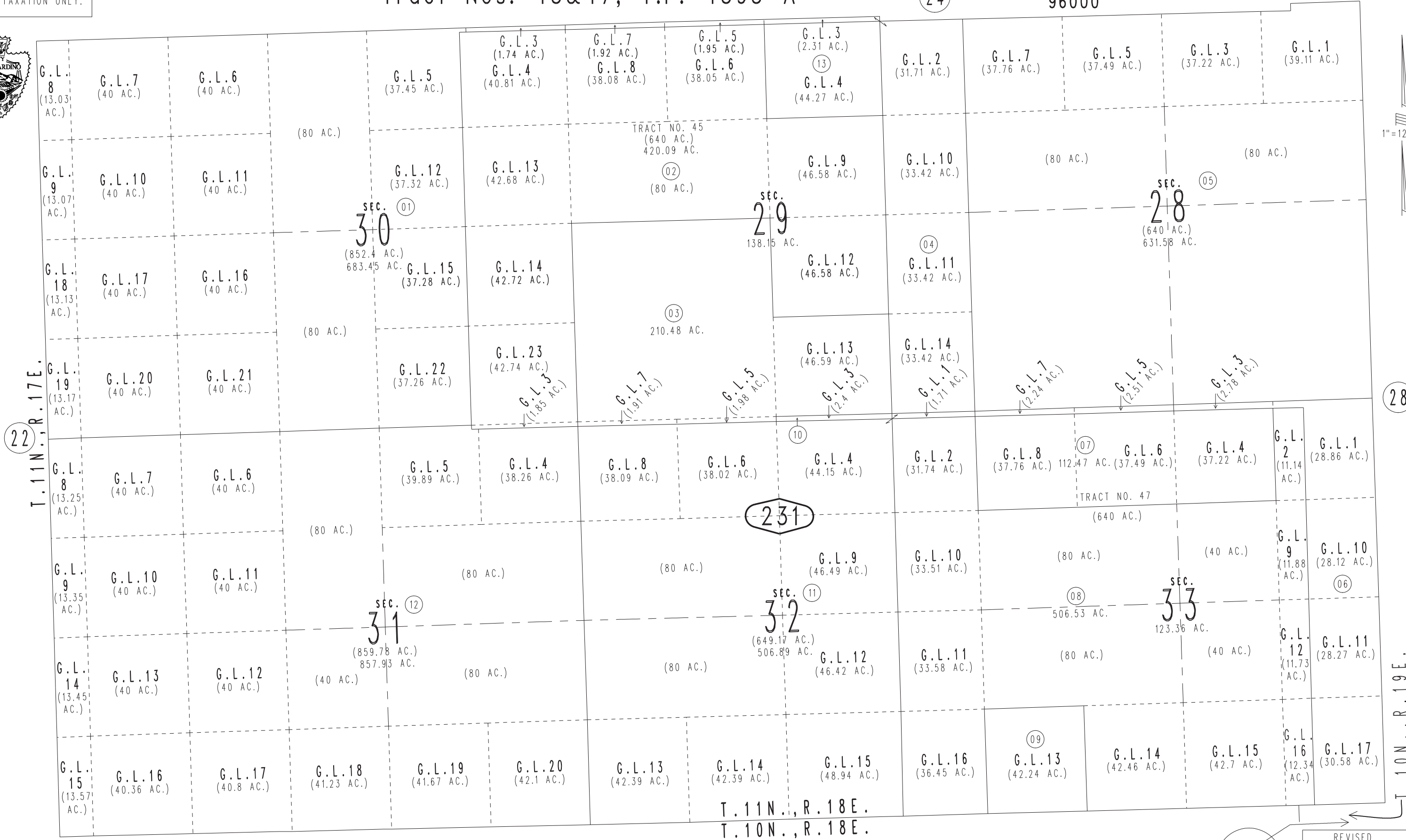
Fractional Sec.28,29,30,31,32&33, T.11N.,R.18E., S.B.B.&M. Tract Nos. 45&47, T.P. 4393 A

Needles Unified Tax Rate Area 96000

0657-23



1"=1200'



T.11N.,R.17E.

28

T.11N.,R.18E. T.10N.,R.18E.

T.10N.,R.19E.

0656 14

Assessor's Map Book 0657 Page 23 San Bernardino County

0659 06

REVISED