

THIS MAP IS FOR THE PURPOSE OF AD VALOREM TAXATION ONLY.



Fractional Sec.9&16, Sec.3&4, T.11N.,R.17E.
Tract Nos. 41,42&45., T.P. 4392 A, S.B.B.&M.

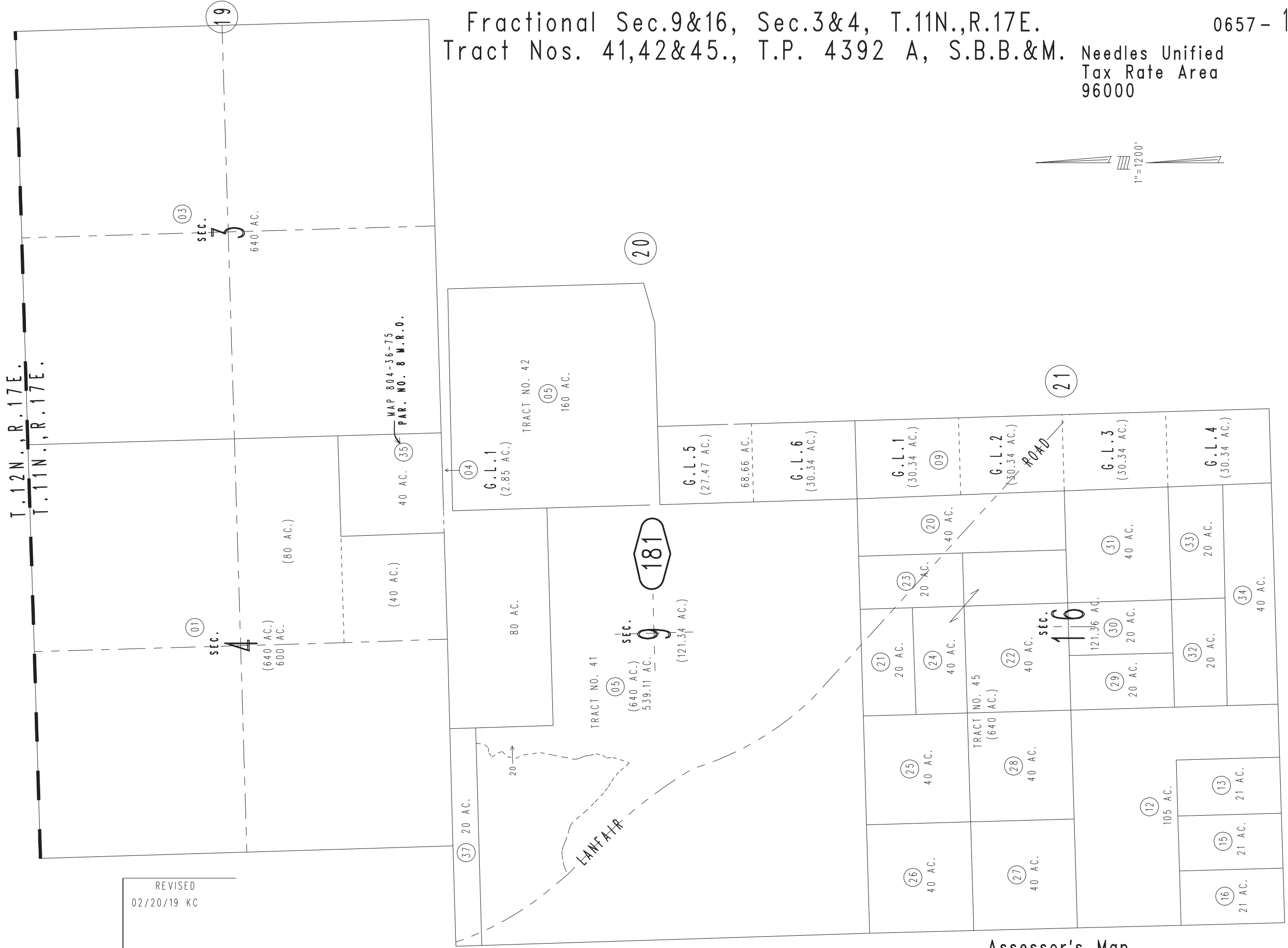
0657-18

Needles Unified
Tax Rate Area
96000



0568
01

T.12N., R.17E.
T.11N., R.17E.



REVISED
02/20/19 KC