

THIS MAP IS FOR THE PURPOSE OF AD VALOREM TAXATION ONLY.



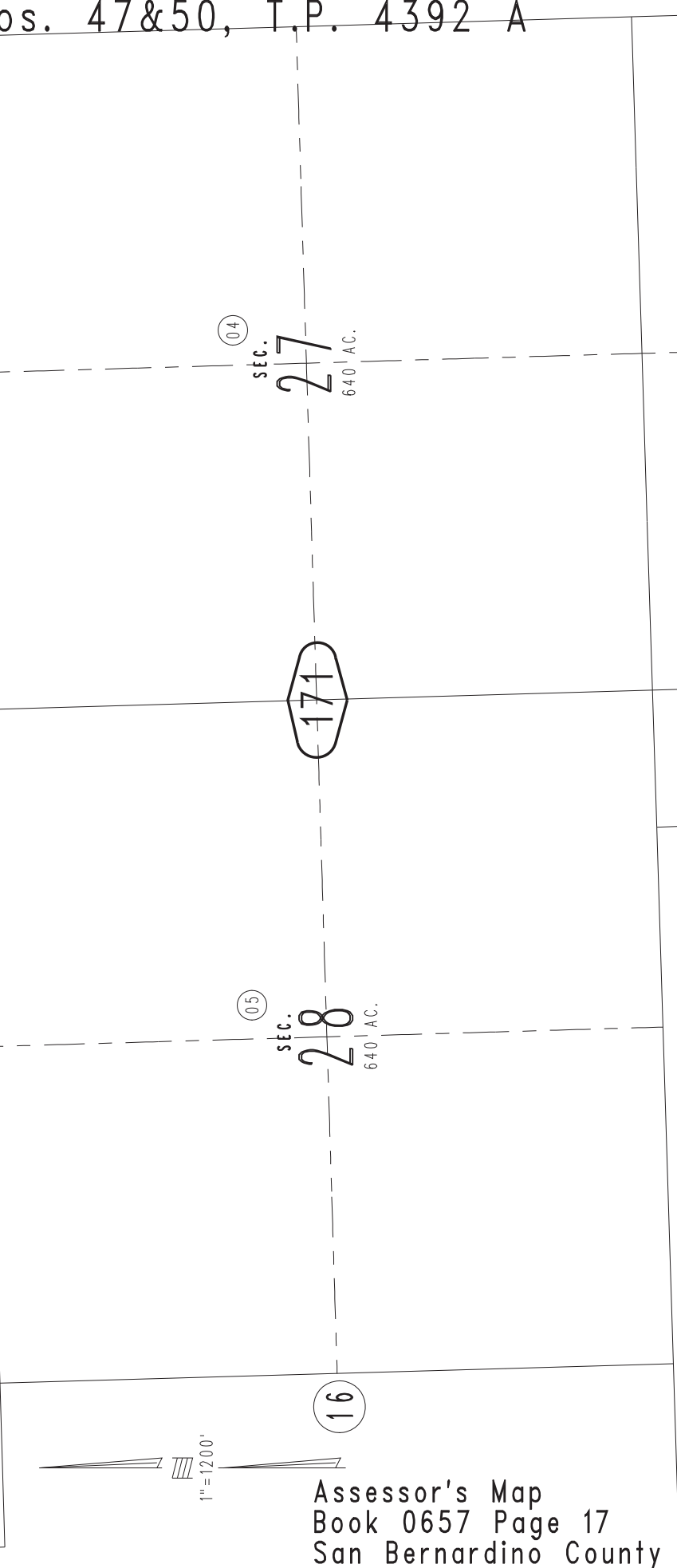
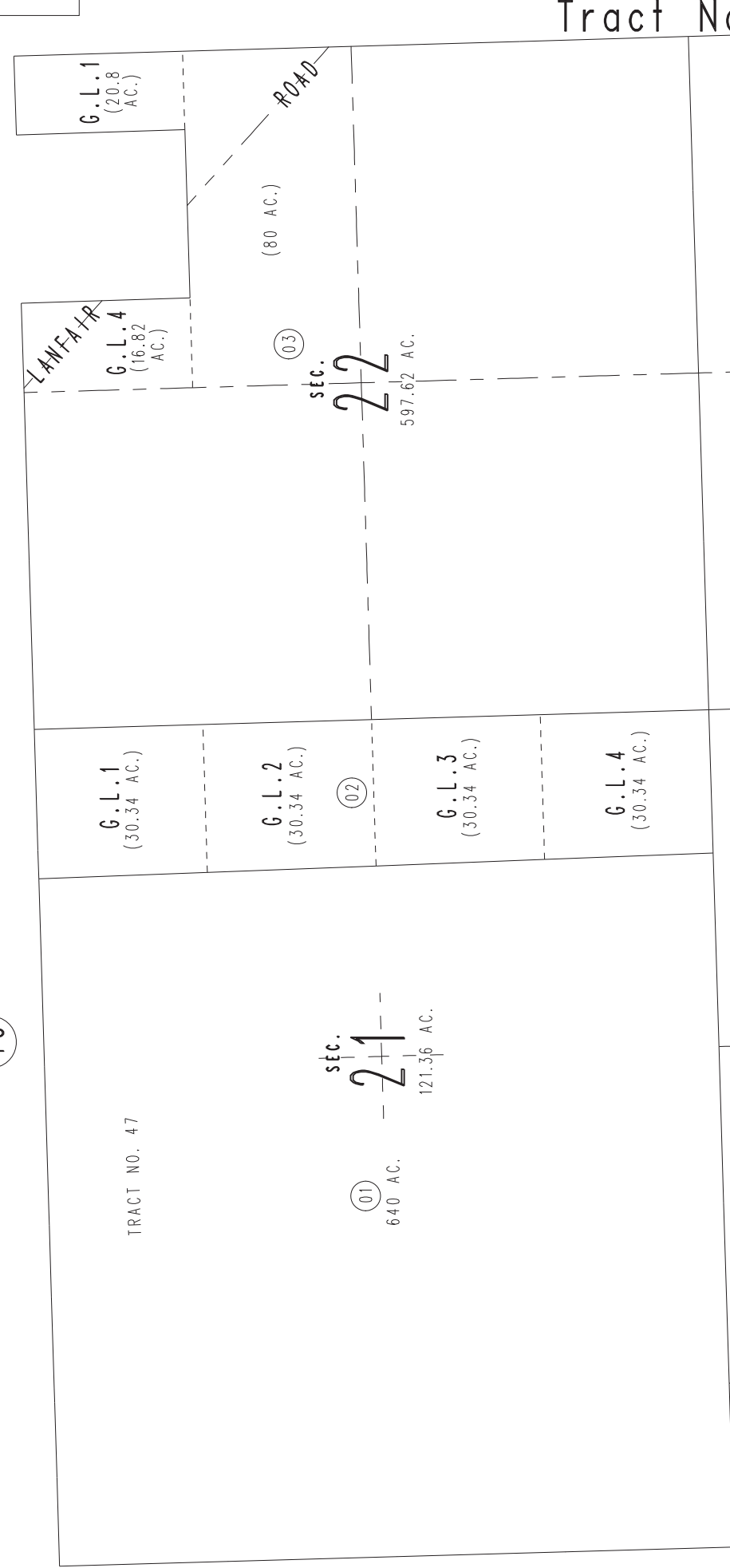
# Fractional Sec.21,22,33&34, Sec.27&28, T.11N.,R.17E., S.B.B.&M<sup>(22)</sup> Tract Nos. 47&50, T.P. 4392 A

Needles Unified  
Tax Rate Area  
96000

0657-17

21

18



Assessor's Map  
Book 0657 Page 17  
San Bernardino County

T. 11 N., R. 17 E. | T. 10 N., R. 18 E.

0656  
14

0656  
13

REVISED