

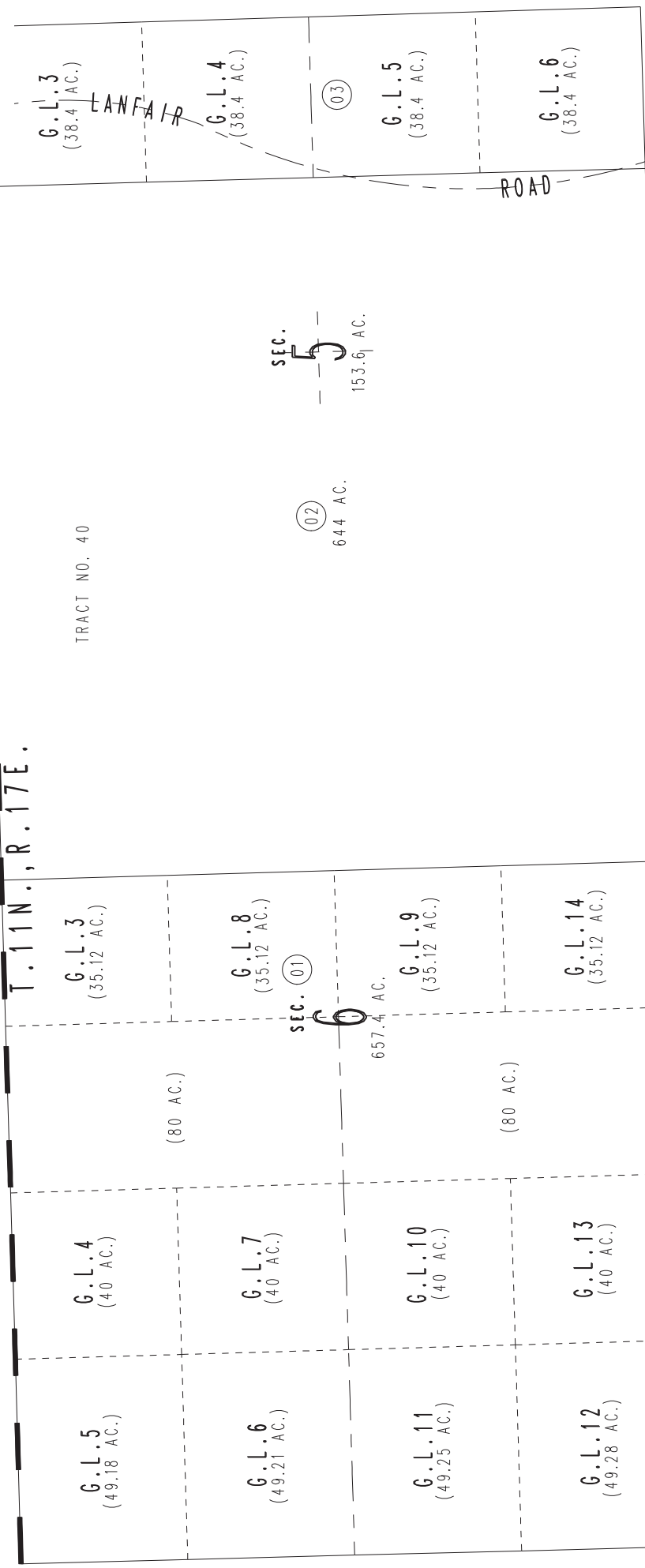
THIS MAP IS FOR THE PURPOSE OF AD VALOREM TAXATION ONLY.



0568  
01

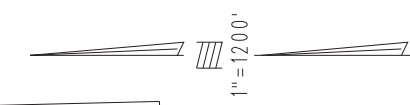
June 2005

T. 12N., R. 17E.  
T. 11N., R. 17E.

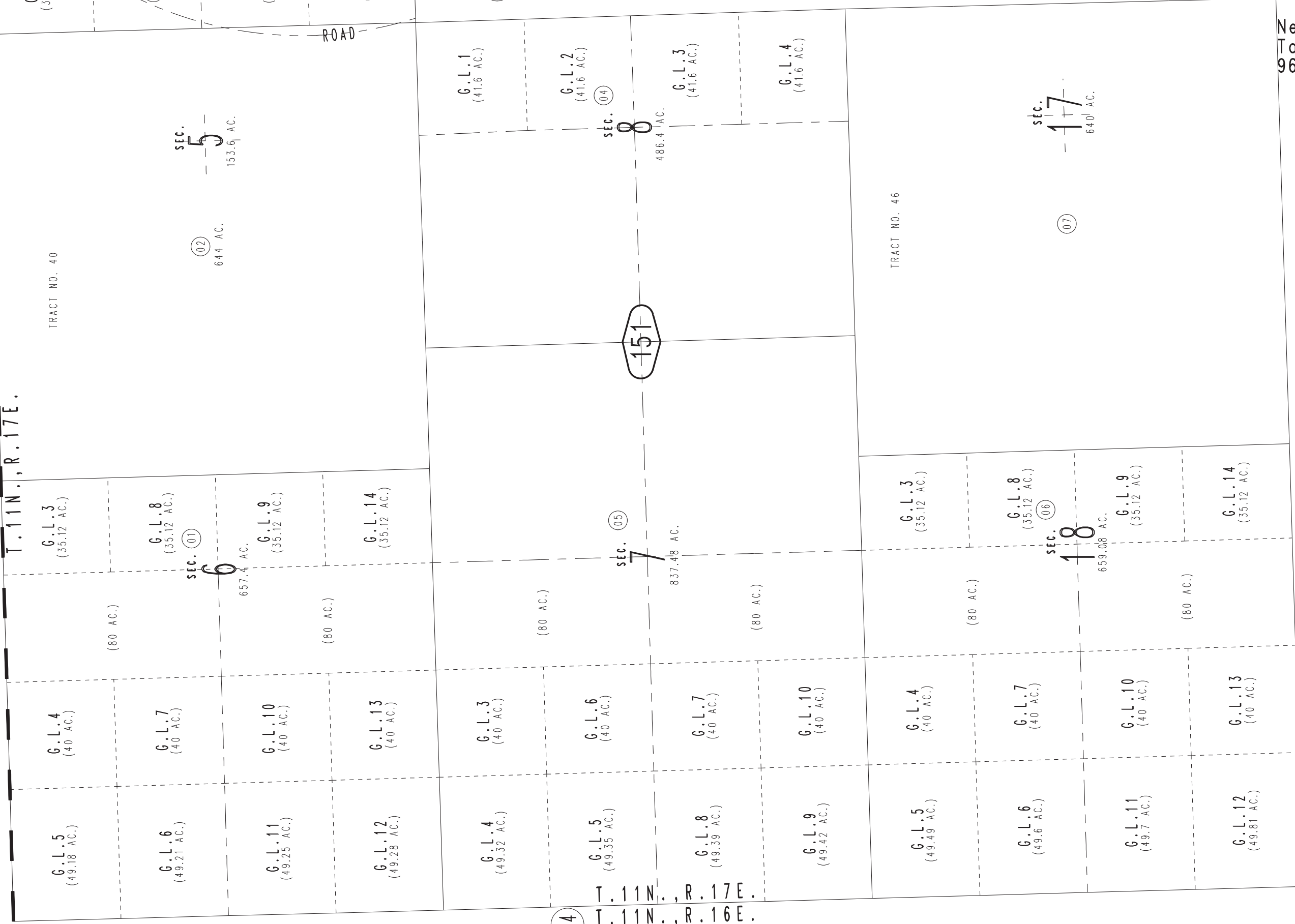


Fractional Sec. 5, 6, 7, 8, & 18., T. 11N., R. 17E., S.B.B.&M.  
Tract Nos. 40 & 46, T.P. 4392 A

0657-15



Needles Unified  
Tax Rate Area  
96000



14 T. 11N., R. 17E.  
T. 11N., R. 16E.

16

Assessor's Map  
Book 0657 Page 15  
San Bernardino County

REVISED  
10/16/13 BK-MC