

THIS MAP IS FOR THE PURPOSE OF AD VALOREM TAXATION ONLY.

Fractional Sec.5,6,7,8,&9, T.11N.,R.16E., S.B.B.&M.  
Tract Nos. 38&39, T.P. 4391 A

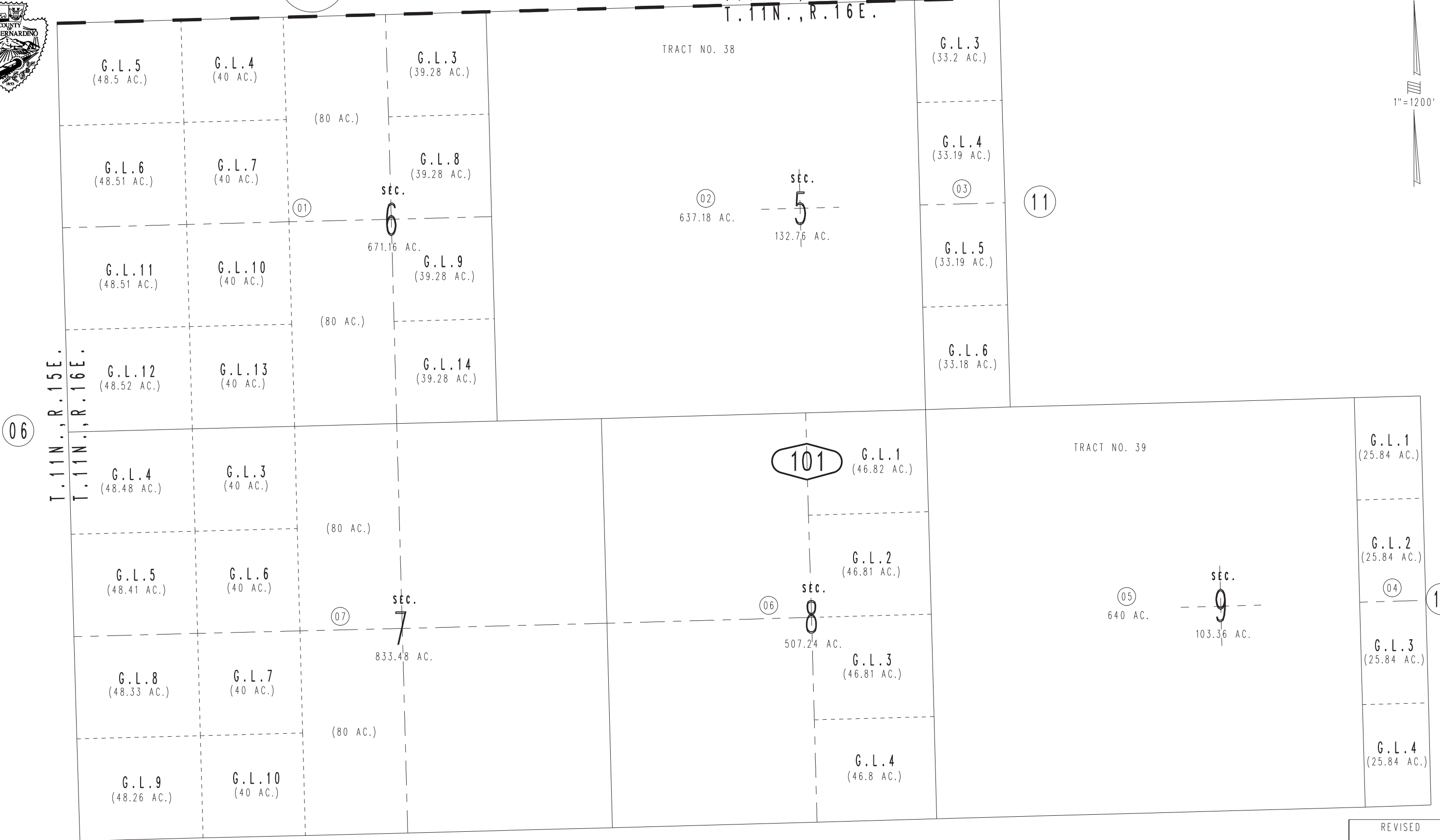
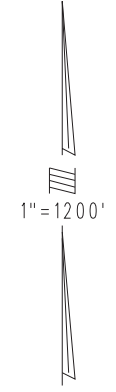
Needles Unified  
Tax Rate Area  
96000

0657-10



0567  
16

T.12N.,R.16E.  
T.11N.,R.16E.



06

T.11N.,R.15E.  
T.11N.,R.16E.

09