

THIS MAP IS FOR THE PURPOSE
OF AD VALOREM TAXATION ONLY.

Fractional Sec.23,24,25,26,35,&36., T.11N.,R.15E., S.B.B.&M.
Tract Nos. 41&44, T.P. 4390 A

Needles Unified
Tax Rate Area
96000

0657-07



06

09

08

04

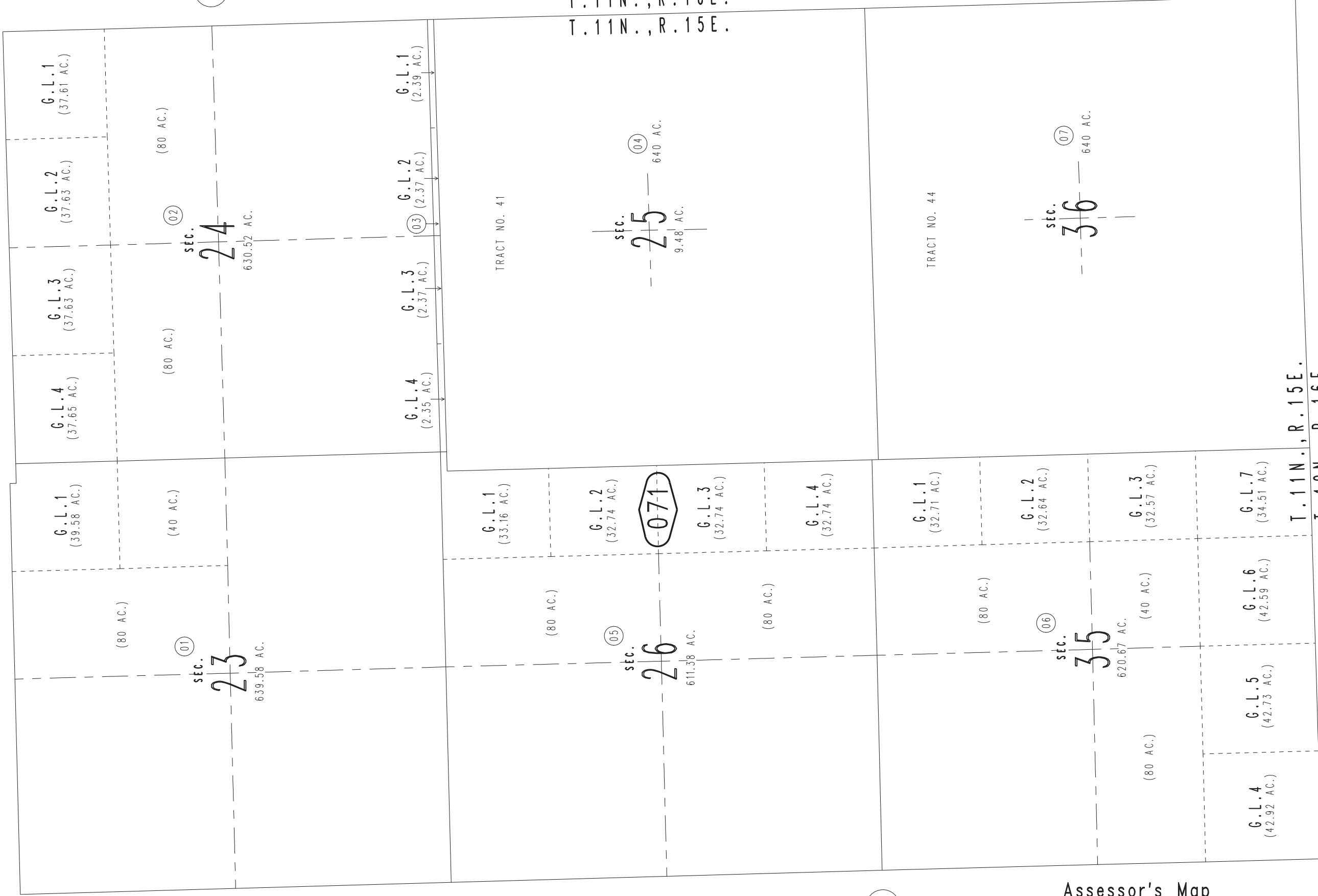
03

0656
05

June 2005

Assessor's Map
Book 0657 Page 07
San Bernardino County

REVISED



T.11N.,R.16E.
T.11N.,R.15E.

T.11N.,R.15E.
T.10N.,R.16E.