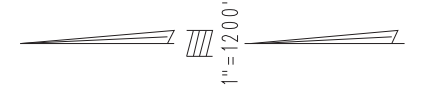


THIS MAP IS FOR THE PURPOSE
OF AD VALOREM TAXATION ONLY.

Sec.8 & Fractional Sec.6,7,18, T.6N.,R.17E., S.B.B.&M.

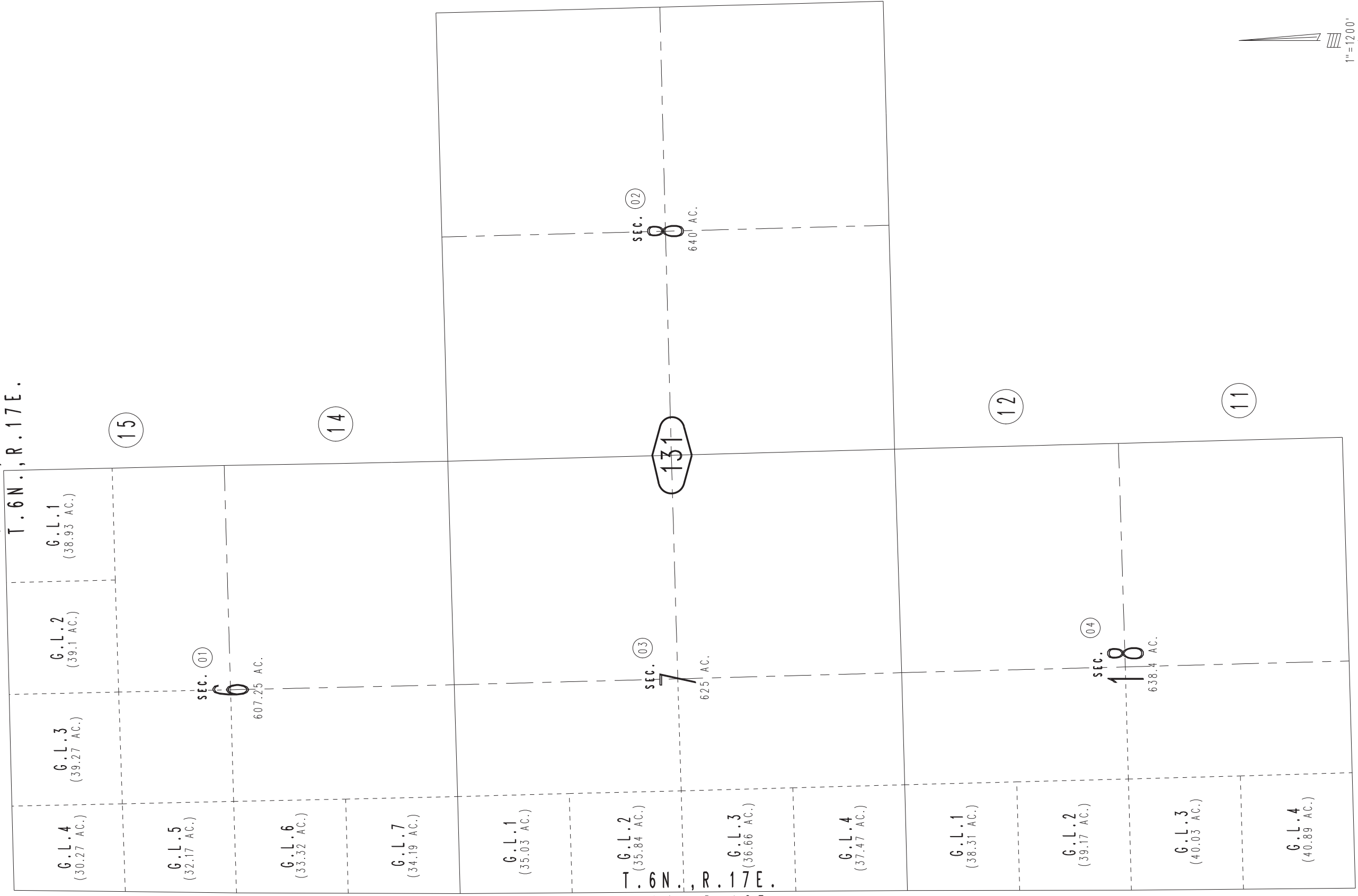
Needles Unified
Tax Rate Area
96005

0654-13



0655
11

T.7N., R.17E.
T.6N., R.17E.



G.L.1
(38.93 AC.)

G.L.2
(39.1 AC.)

G.L.3
(39.27 AC.)

G.L.4
(30.27 AC.)

G.L.5
(32.17 AC.)

G.L.6
(33.32 AC.)

G.L.7
(34.19 AC.)

G.L.1
(35.03 AC.)

G.L.2
(35.84 AC.)

G.L.3
(36.66 AC.)

G.L.4
(37.47 AC.)

G.L.1
(38.31 AC.)

G.L.2
(39.17 AC.)

G.L.3
(40.03 AC.)

G.L.4
(40.89 AC.)

SEC. 01
6
607.25 AC.

SEC. 03
7
625 AC.

SEC. 02
8
640 AC.

SEC. 04
18
638.4 AC.

131

T.6N., R.17E.
T.6N., R.16E.