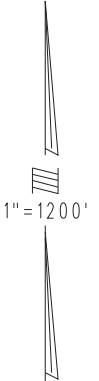
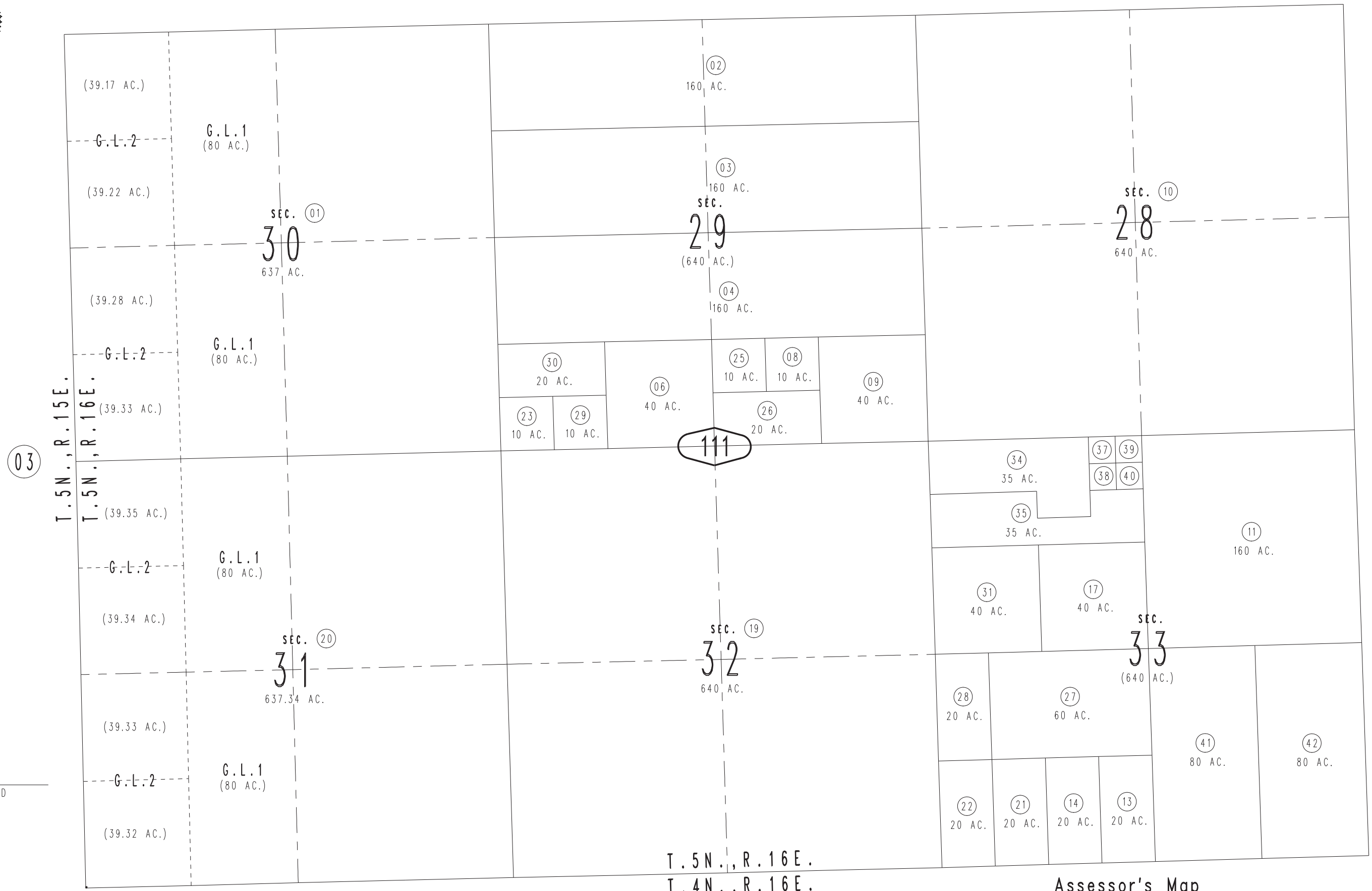


THIS MAP IS FOR THE PURPOSE OF AD VALOREM TAXATION ONLY.

Sec.28,29,32,33 & Fractional Sec.30,31, T.5N.,R.16E., S.B.B.&M.

Needles Unified Tax Rate Area 96005

0653-11



12

03

10

13

REVISED

June 2005

Assessor's Map Book 0653 Page 11 San Bernardino County