

THIS MAP IS FOR THE PURPOSE  
OF AD VALOREM TAXATION ONLY.

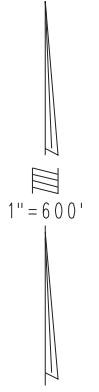
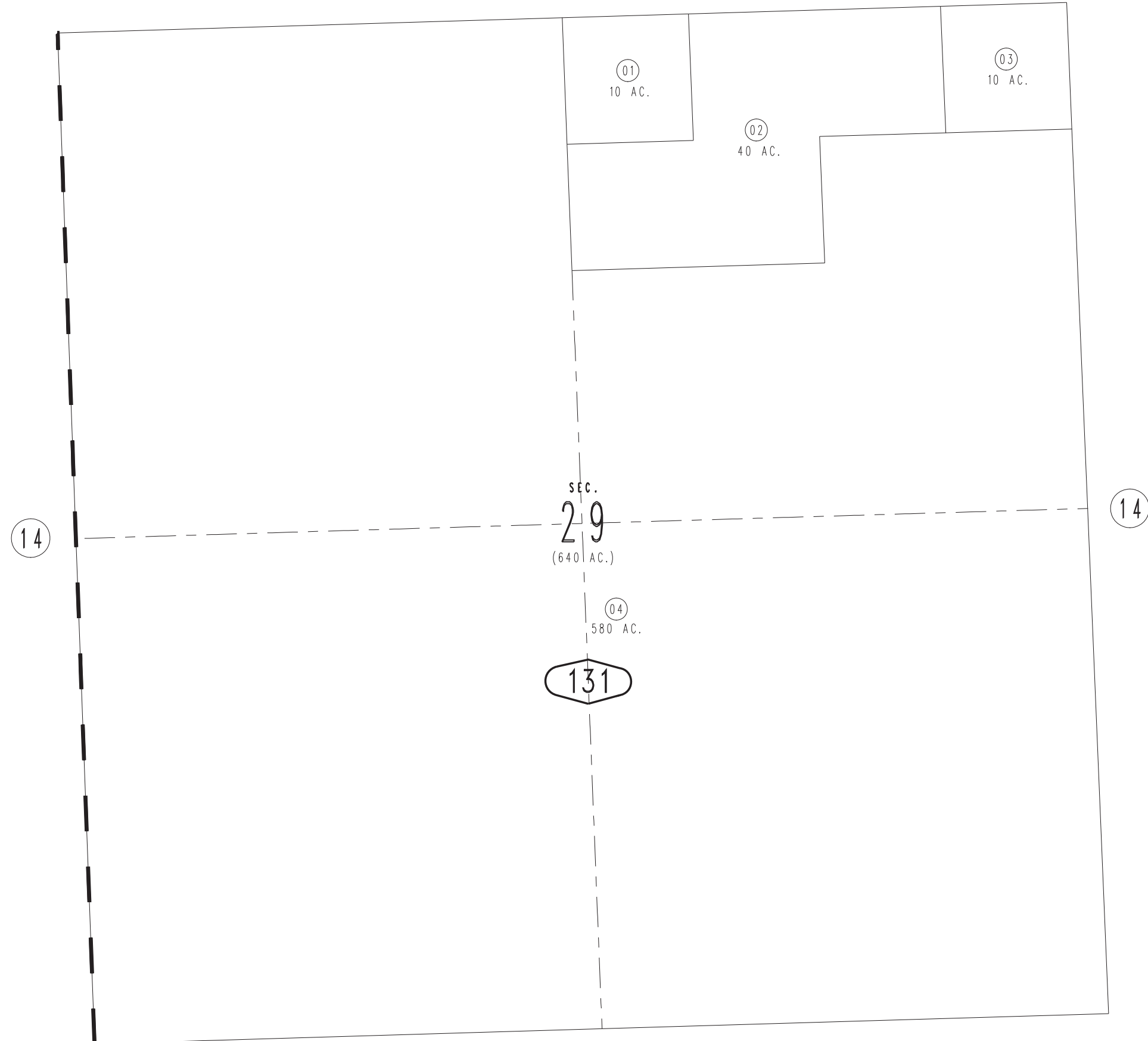


Sec.29, T.8N.,R.22E., S.B.B.&M.

Needles Unified  
Tax Rate Area  
96020

0651 - 13

14



14

SEC.  
29  
(640 AC.)

14

04  
580 AC.

131

14

Assessor's Map  
Book 0651 Page 13  
San Bernardino County

REVISED