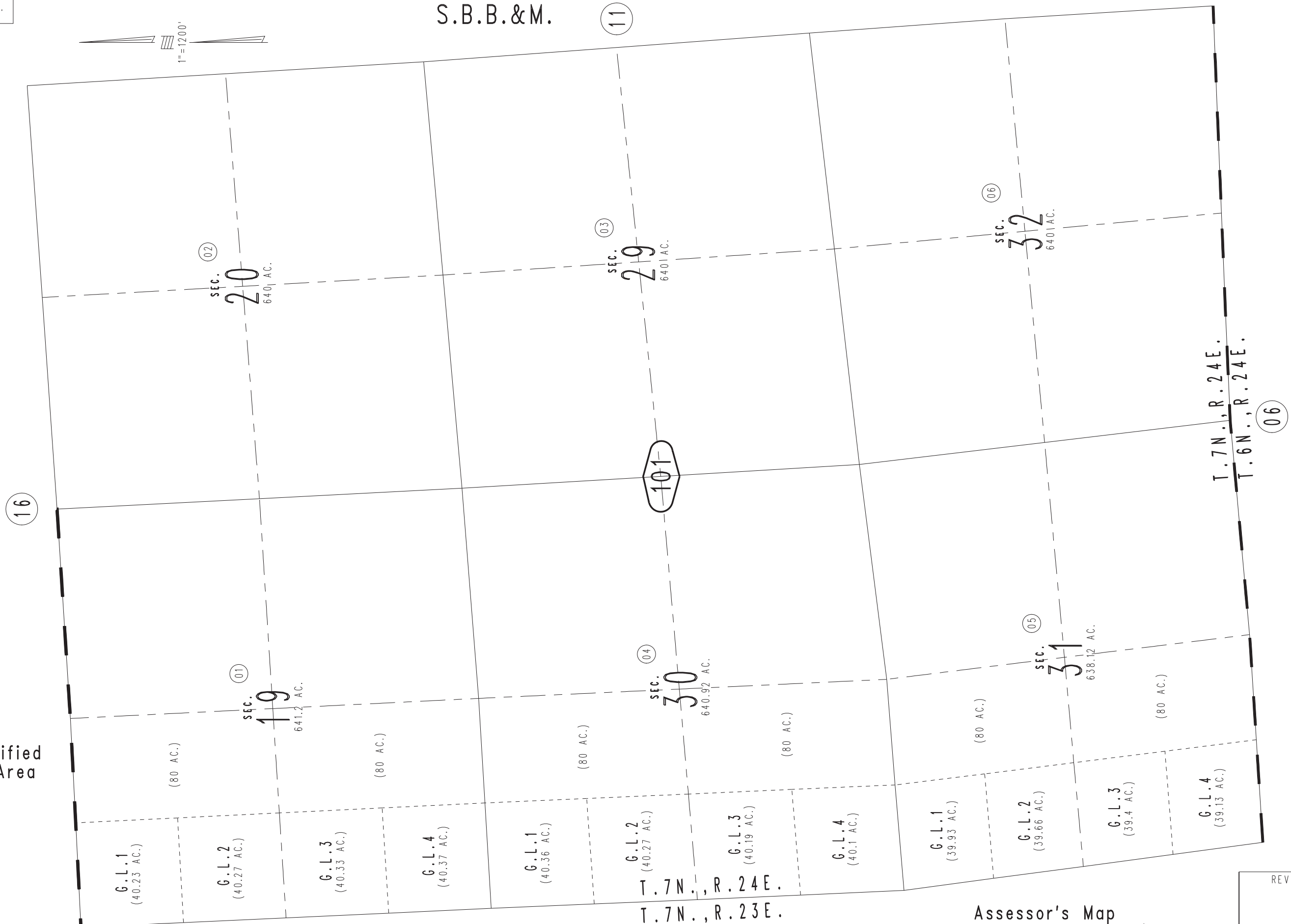
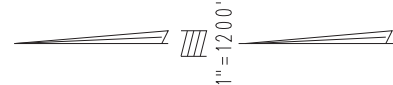


THIS MAP IS FOR THE PURPOSE
OF AD VALOREM TAXATION ONLY.



Fractional Sec.19,30,31, Sec.20,29&32, T.7N.,R.24E., S.B.B.&M.

0650-10



Needles Unified
Tax Rate Area
96005

May 2005

Assessor's Map
Book 0650 Page 10
San Bernardino County

REVISED