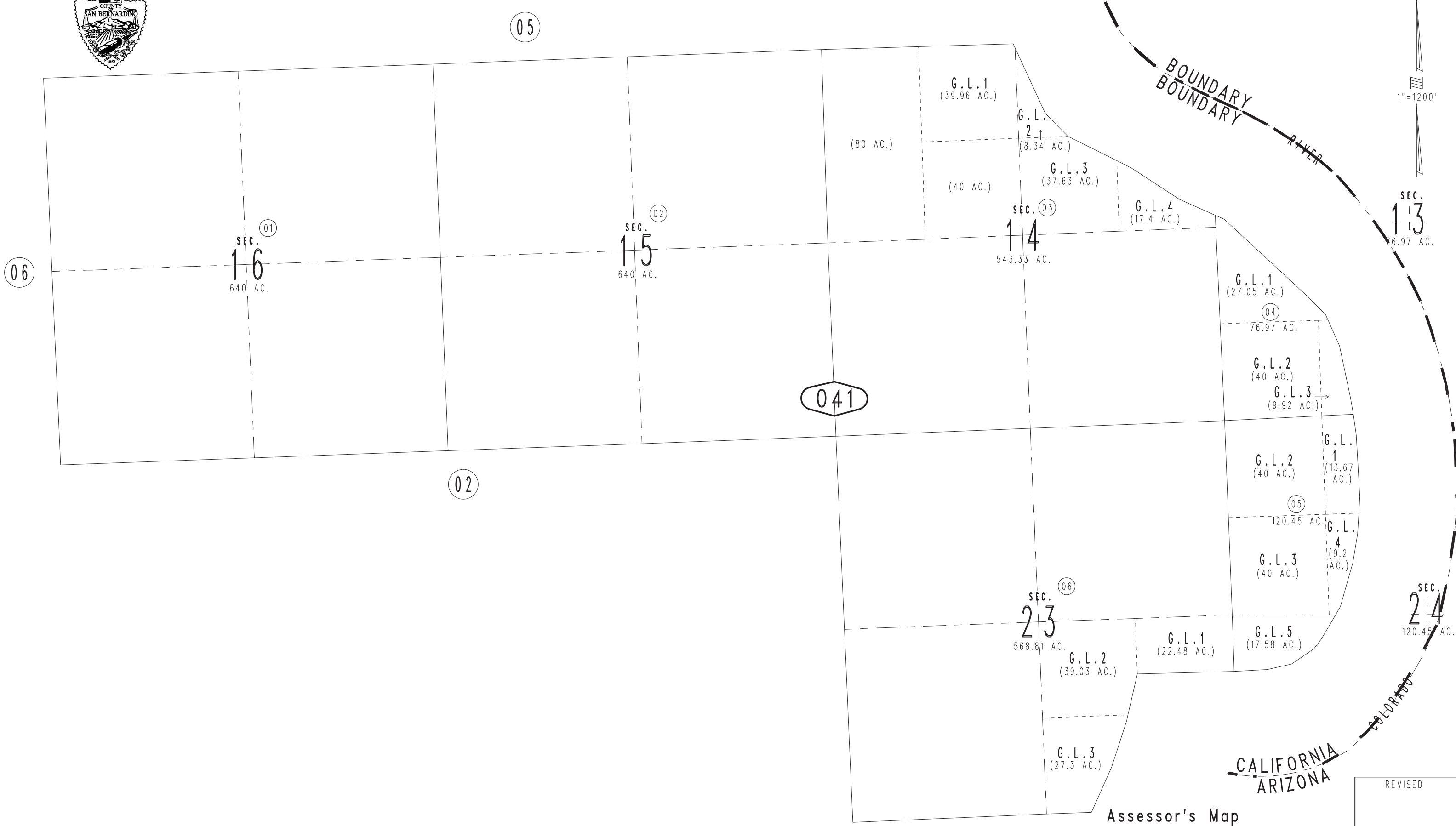


THIS MAP IS FOR THE PURPOSE
OF AD VALOREM TAXATION ONLY.

Fractional Sec.13,14,23,24 & Sec.15&16, T.6N.,R.24E. S.B.B.&M.

Needles Unified
Tax Rate Area
96027

0650-04



06

05

01

02

03

13

SEC. 16
640 AC.

SEC. 15
640 AC.

SEC. 14
543.33 AC.

13
6.97 AC.

041

02

G.L. 1
(27.05 AC.)

04

G.L. 2
(40 AC.)

G.L. 3
(9.92 AC.)

G.L. 2
(40 AC.)

G.L. 1
(13.67 AC.)

05

G.L. 4
(9.2 AC.)

G.L. 3
(40 AC.)

SEC. 24

120.45 AC.

06

SEC. 23
568.81 AC.

G.L. 2
(39.03 AC.)

G.L. 1
(22.48 AC.)

G.L. 5
(17.58 AC.)

G.L. 3
(27.3 AC.)

CALIFORNIA
ARIZONA