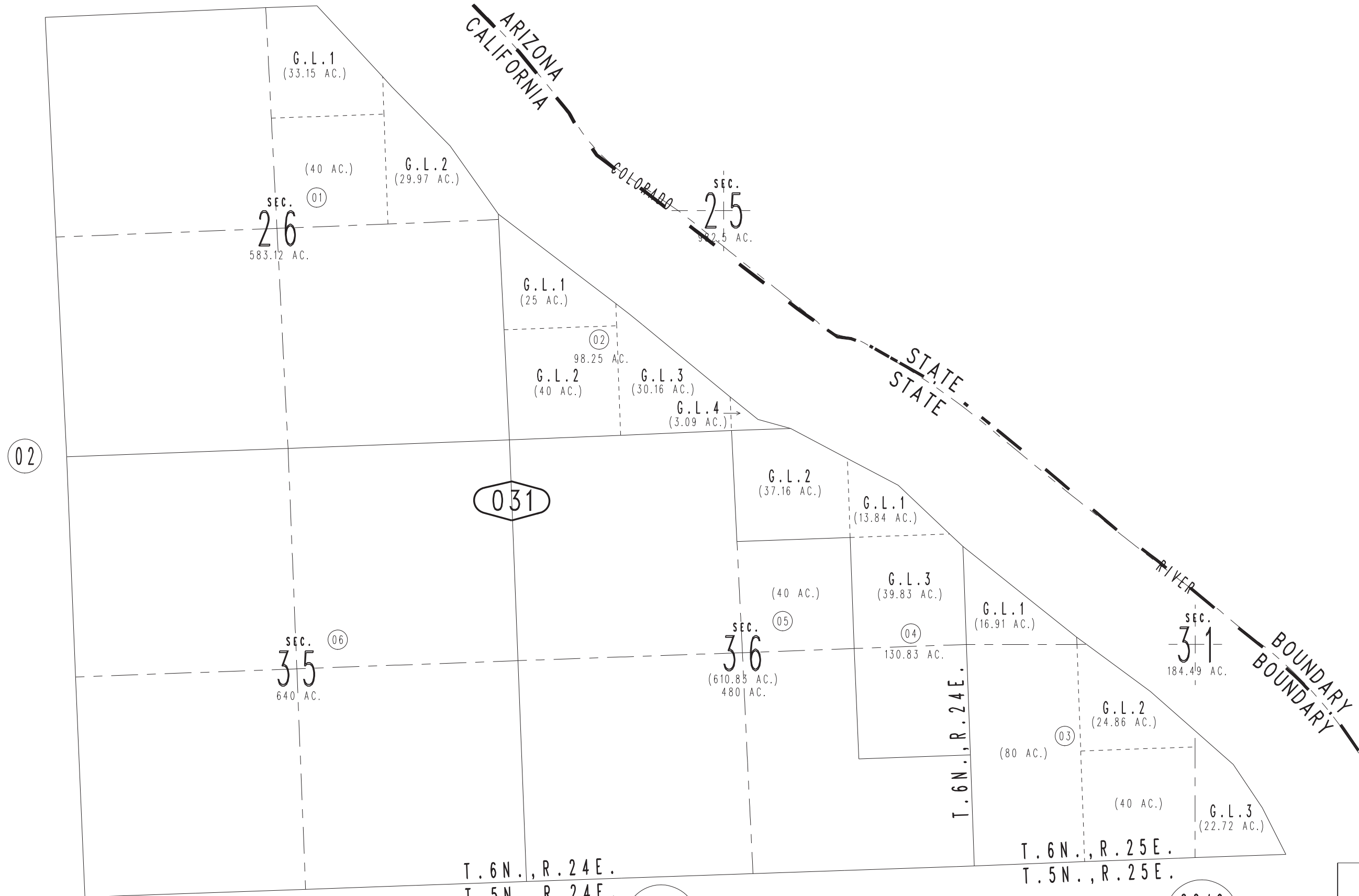
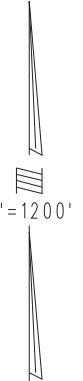


THIS MAP IS FOR THE PURPOSE
OF AD VALOREM TAXATION ONLY.

Fractional Sec.25,26&36, Sec.35, T.6N.,R.24E., & Fractional Sec.31, T.6N.,R.25E., S.B.B.&M.

Needles Unified
Tax Rate Area
96027

0650-03



02

04

031

T.6N., R.24E.
T.5N., R.24E.

T.6N., R.25E.
T.5N., R.25E.

Assessor's Map
Book 0650 Page 03
San Bernardino County

REVISED

0649
26

0649
25