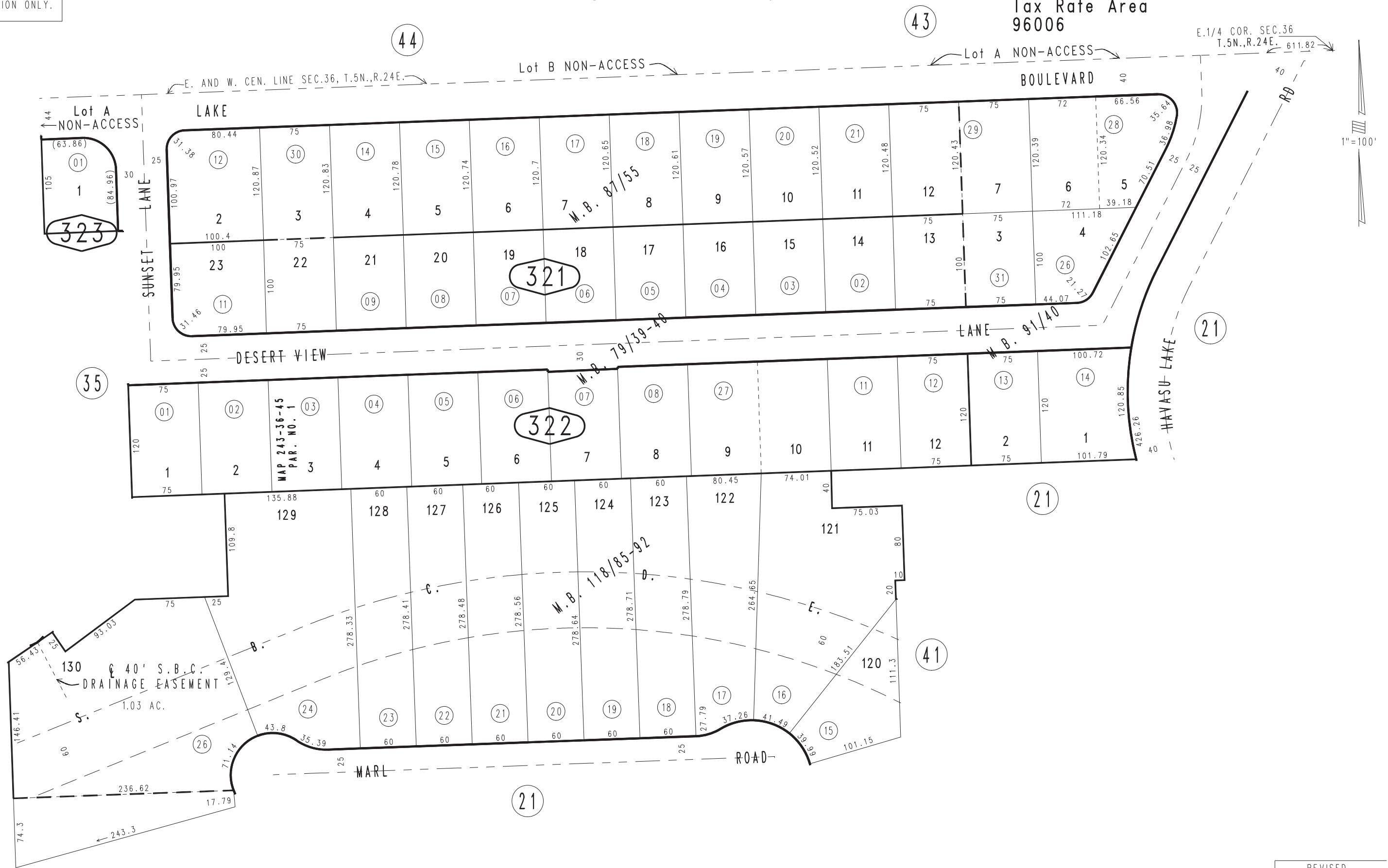


THIS MAP IS FOR THE PURPOSE OF AD VALOREM TAXATION ONLY.

Tract No. 5968, Havasu Heights, M.B. 79/39-40

Needles Unified
Tax Rate Area
96006

0649-32



July 2005

Ptn. Tract No. 8284, M.B. 118/85-92
Tract No. 6494, M.B. 91/40
Tract No. 6595, M.B. 87/55

Ptn. S.W.1/4, Sec. 36
T.5N., R.24E.

Assessor's Map
Book 0649 Page 32
San Bernardino County

REVISED
10/18/18 KC
11/24/20 KA