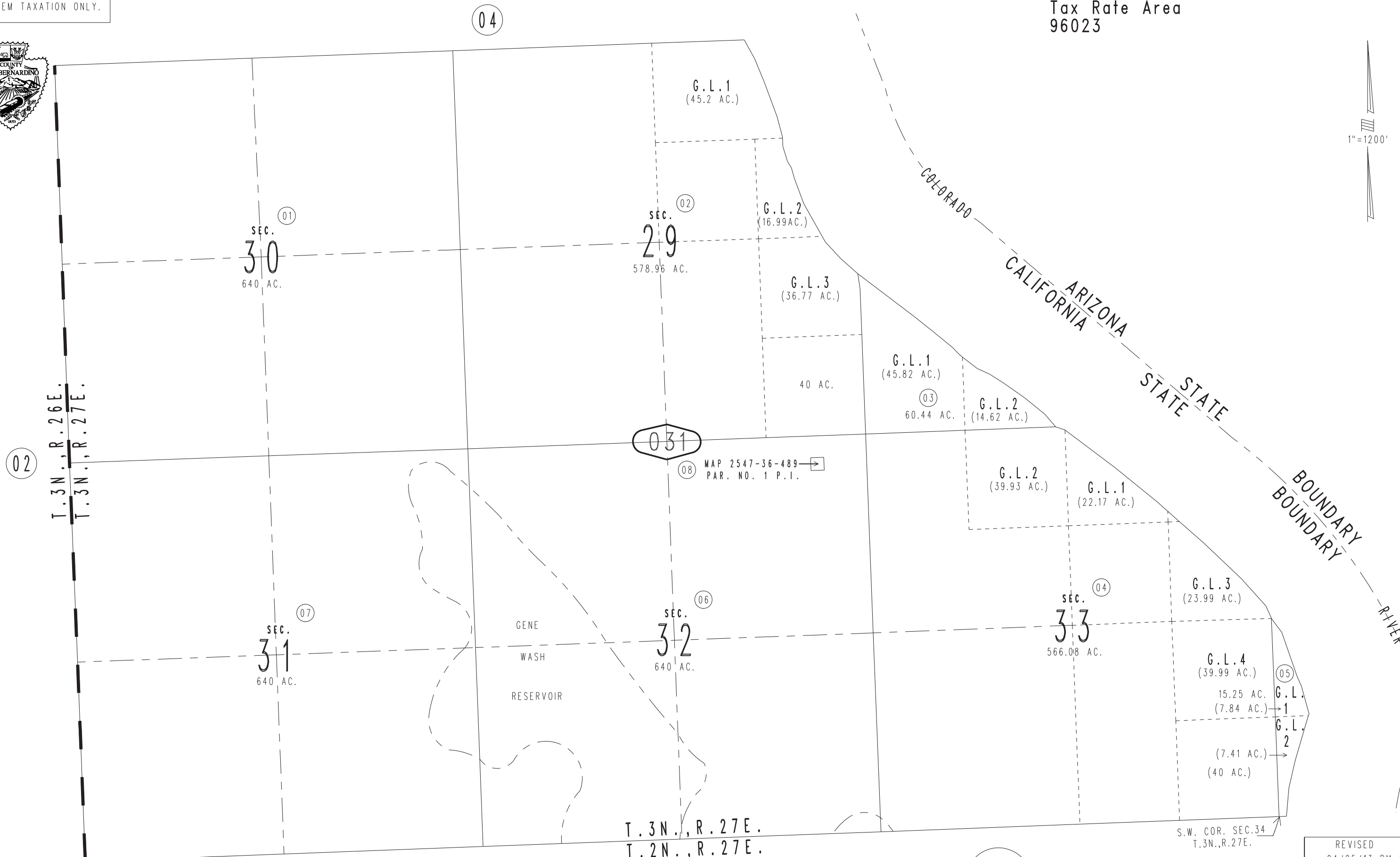
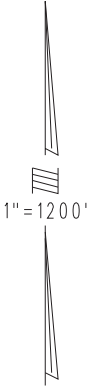


THIS MAP IS FOR THE PURPOSE OF AD VALOREM TAXATION ONLY.

Sec.30,31,32 & Fractional Sec.28,29,33,34, T.3N.,R.27E., S.B.B.&M.

Needles Unified Tax Rate Area 96023

0649-03



04

SEC. 30 640 AC.

SEC. 29 578.96 AC.

G.L.1 (45.2 AC.)

G.L.2 (16.99 AC.)

G.L.3 (36.77 AC.)

G.L.1 (45.82 AC.)

G.L.2 (14.62 AC.)

G.L.2 (39.93 AC.)

G.L.1 (22.17 AC.)

G.L.3 (23.99 AC.)

G.L.4 (39.99 AC.)

G.L.1 (7.84 AC.)

G.L.2 (7.41 AC.)

(40 AC.)

T.3N., R.26E. T.3N., R.27E.

02

031

MAP 2547-36-489 PAR. NO. 1 P.I.

SEC. 31 640 AC.

SEC. 32 640 AC.

SEC. 33 566.08 AC.

T.3N., R.27E. T.2N., R.27E.

S.W. COR. SEC.34 T.3N., R.27E.

0661 19

0661 20

Assessor's Map Book 0649 Page 03 San Bernardino County

REVISED 04/25/13 RM-MC