

THIS MAP IS FOR THE PURPOSE OF AD VALOREM TAXATION ONLY.

Sec.8,9 & Fractional Sec.4,5,6,7, T.5N.,R.22E., S.B.B.&M.

0651  
23

0651  
22

Needles Unified  
Tax Rate Area  
96005

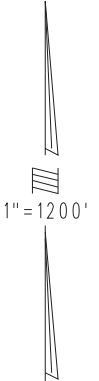
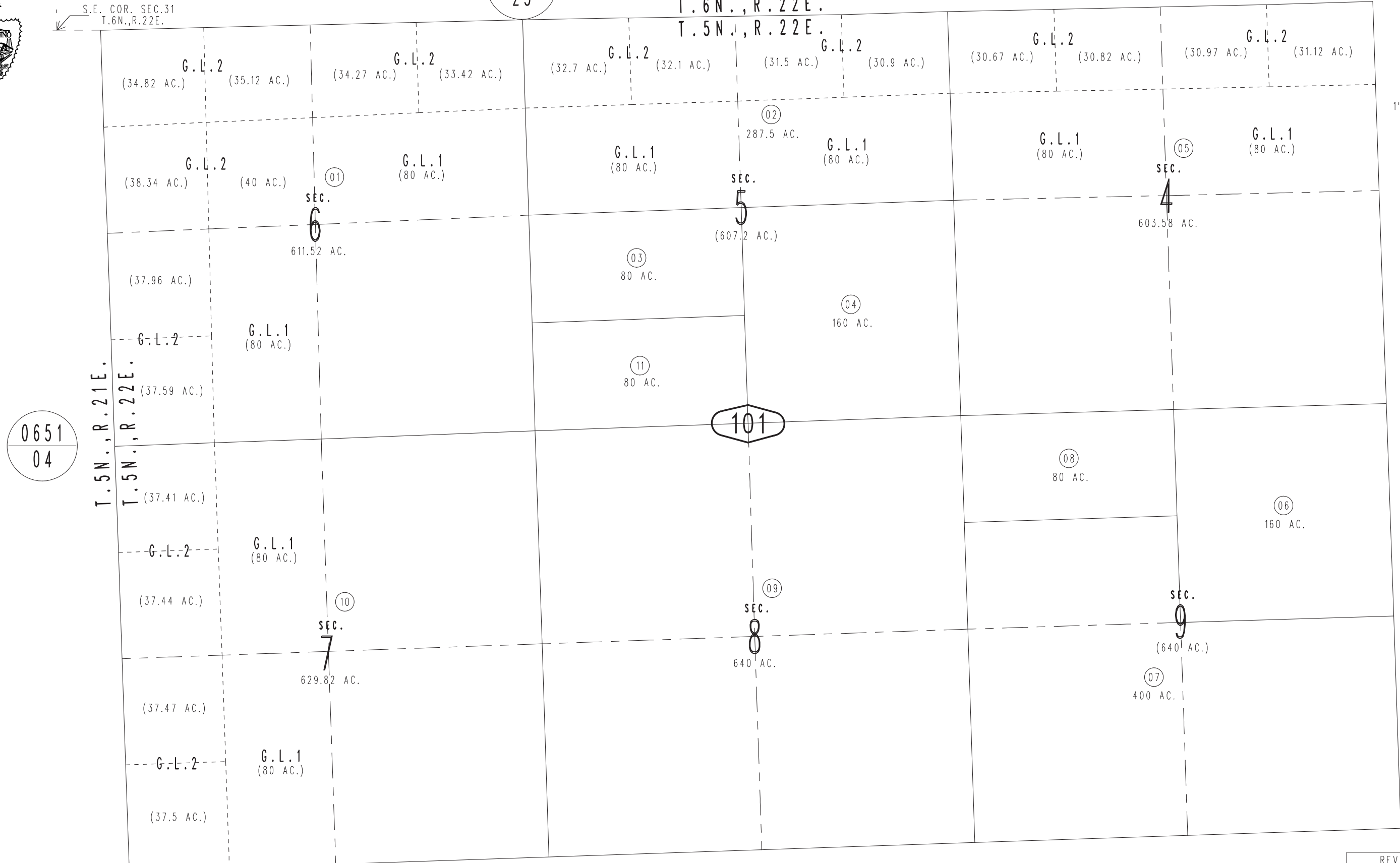
0648-10



S.E. COR. SEC.31  
T.6N.,R.22E.

T.6N.,R.22E.

T.5N.,R.22E.



0651  
04

11

101

11