

THIS MAP IS FOR THE PURPOSE OF AD VALOREM TAXATION ONLY.

Sec.11,12,13, Fractional Sec.1,2,14., T.4N.,R.6E., S.B.B.&M.

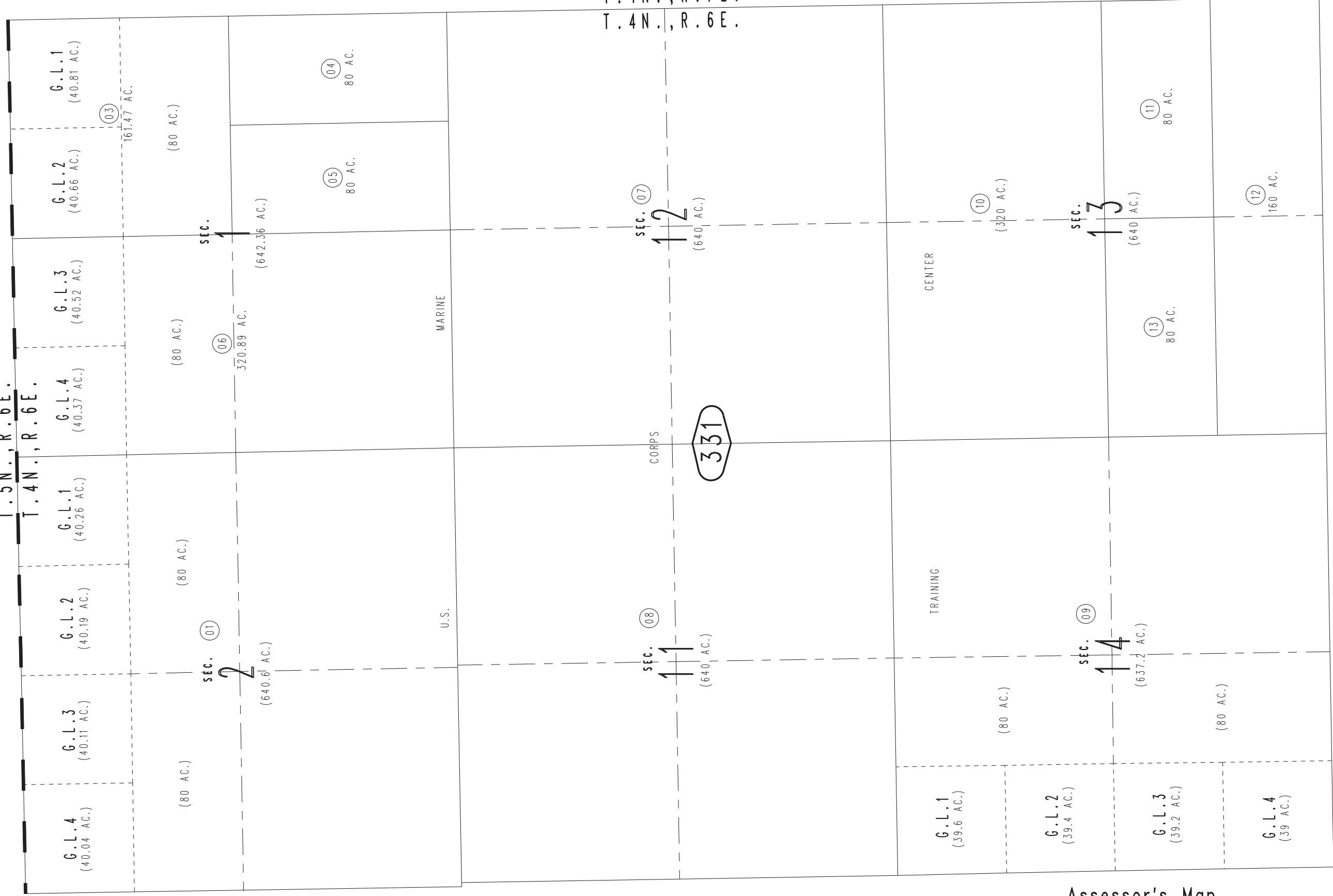
Morongo Unified Tax Rate Area 94003

0635-33



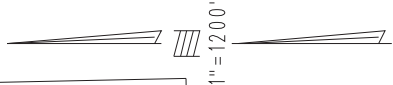
0551 / 01

T.5N., R.6E.  
T.4N., R.6E.



T.4N., R.7E.  
T.4N., R.6E.

34



32

30

REVISED