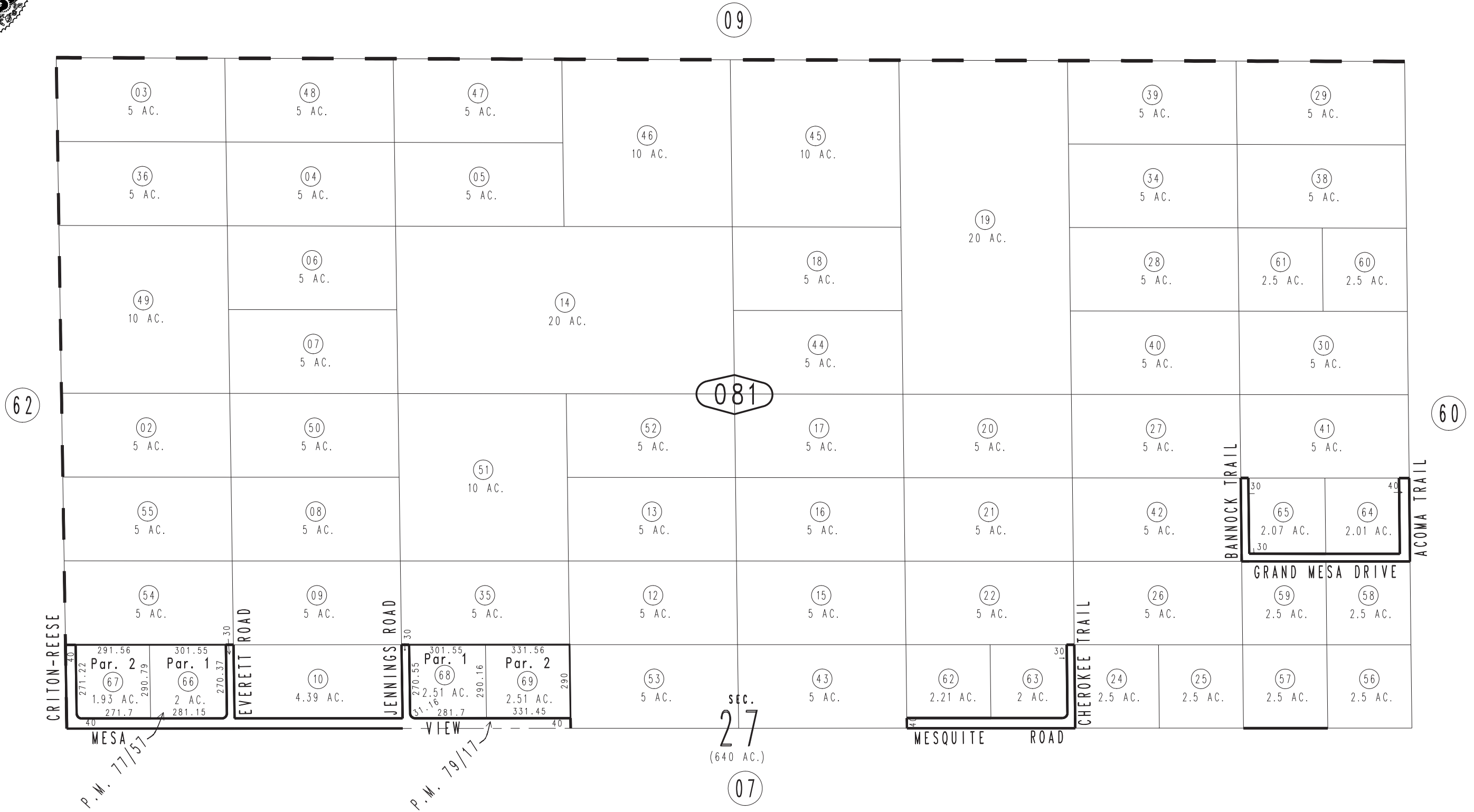


THIS MAP IS FOR THE PURPOSE  
OF AD VALOREM TAXATION ONLY.

N.1/2 Sec.27, T.3N.,R.5E., S.B.B.&M.

Morongo Unified  
Tax Rate Area  
94038

0635-08



March 2005

Parcel Map No. 7528, P.M. 79/17  
Parcel Map No. 7308, P.M. 77/57

Assessor's Map  
Book 0635 Page 08  
San Bernardino County

REVISED  
09/27/11 RM  
04/23/13 RM-MC